



HEALTH SCIENCES

OFFICE FOR COMMUNITY HEALTH

MATTHEW PROBST, PA-C
DIRECTOR OF RURAL ENGAGEMENT

Roadmap to Recovery



BUILDING A WORKFORCE AND SUPPORTING OUR YOUTH

It Takes a Village

<https://kera.pbslearningmedia.org/resource/828c0d4d-e255-4177-a9a5-e4d88267df5b/the-providers/>



<https://www.pbslearningmedia.org/resource/86652a21-bd76-41d9-9e0b-7db3f1fe97e5/the-providers/>

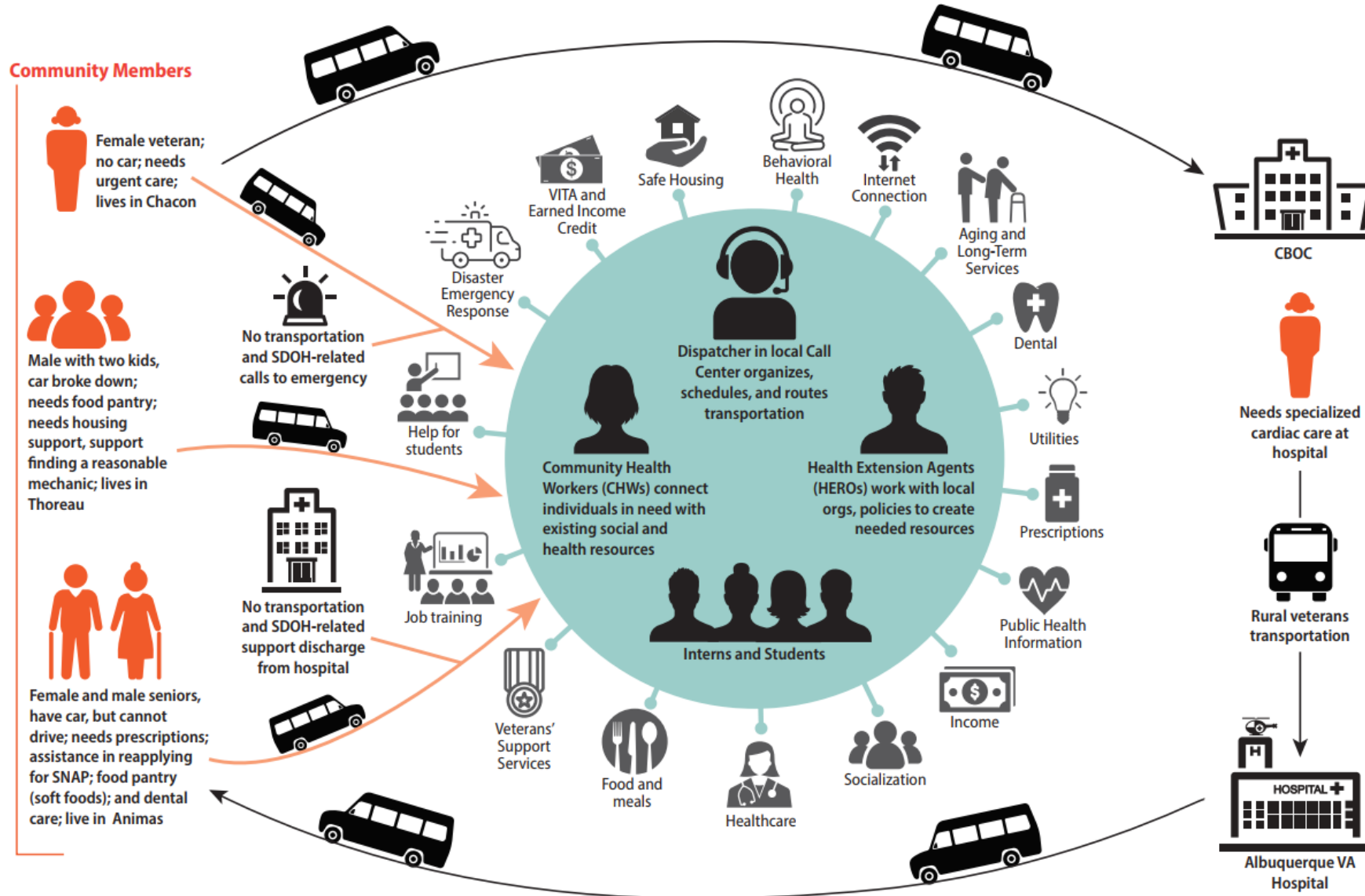
Team-Based Relationships



- School-Based Health Centers
- Local School Boards
- School Nurses and Counselors
- Science Teachers
- Student Health Advisory Committees
- County Health Councils
- Local Hospitals
- Community Health Centers and Local Providers
- Higher Education / Academic Centers
- Public Health Offices (DOH)
- Area Health Education Centers (AHEC)
- Public Libraries
- Local First Responders
- School and Youth Clubs – FFA, 4H, STEM programs (MESA), health career
- Farmers Markets, Community Gardens, Ag Extension Offices

Rural Transportation Mobility Hubs

Community-Responsive, Needs-Driven Public Transportation Pilots Using a Local "Hub and Spokes" Model



UNM: Will train Dispatchers, HEROs, CHWs; Will develop and grow its "Health Mobility Hub" model, will provide Program Evaluation and will mobilize expertise with sustained funding opportunities from all colleges re: SDOH. **Roadrunner Food Bank:** Will coordinate food distribution with "last mile" deliveries from local transport, expand their statewide transport system to fill other SDOH needs and forge links between this project and statewide consortia addressing SDOH. **Medicaid Managed Care Organizations:** will contribute to social referral platform, contribute funds to local transportation systems, and assist in funding case workers, CHWs, navigators.

Regions Preliminary Inventory

Northeast Region

Guadalupe County Potential Hub Sites

Santa Rosa Clinic
 Santa Rosa Mainstreet
 Sunrise Clinics
 Eastern Food Bank of New Mexico (*interested in hiring a CHW and Unite Us*)
 In support with health council and senior centers in Santa Rosa
 Charitable Food Provider: Eastern NM Food Bank, sister food bank to Roadrunner and Meals on Wheels NM
 Transportation Providers: Rural Veterans Transportation and Disabled American Veterans (DAV) Transportation
 Public Health Office: Santa Rosa
 Rural Hospital: Guadalupe County Hospital
 SBHC: Lion Care Health Center

San Miguel County Potential Hub Sites

Bernal Community Center
 El Valle Community Center
 The Samaritan House
 Highlands University
 Sunrise Clinics
 El Centro Family Health
 In support with health council and senior centers in Mosquero, Ribera, and Las Vegas
 Charitable Food Provider: The Food Depot, sister food bank to Roadrunner (*Apart of CONNECT utilizing Unite Us/CONNECT piloting SDOH with SYNCRONYS*) and Meals on Wheels NM
 Transportation Providers: Park and Ride, We Care, Inc (Medicaid), Chile Express (Medicaid), Meadow City Express, and Rural Veterans Transportation, Disabled American Veterans (DAV) Transportation
 Public Health Office: Las Vegas
 SBHC: West Las Vegas SBHC, Sierra Vista Elementary School, Robertson SBHC, and Pecos Teen Health Center

Mora County Potential Hub Sites

Mora Valley Community Health Services
 El Centro Family Health
 In support with health council and senior centers in Mora and Wagon Mound
 Charitable Food Provider: The Food Depot, sister food bank to Roadrunner and Meals on Wheels NM
 Transportation Providers: Rural Veterans Transportation and Disabled American Veterans (DAV) Transportation
 Public Health Office: Mora
 SBHC: Mora SBHC

Southeast Region

Lea County Potential Hub Sites

Nor-Lea Clinics
 PMS Clinics
 Guidance Center of Lea County
 Desert Springs Healthcare
 Jal Clinic
 Salvation Army
 NM Junior College
 In support with health council and senior centers in Woolworth, Eunice, Hobbs, Lovington, and Tatum
 Charitable Food Provider: Roadrunner and Meals on Wheels NM
 Transportation Providers: Hobbs Express, Disabled American Veterans (DAV) Transportation, Southeast NM Veteran's Transportation Network
 Public Health Office: Hobbs
 Rural Hospital: Nor-Lea Hospital District
 SBHC: Eagles Student Health Center and Lovington Student Healthcare Center

Chavez County Potential Hub Sites

Harvest Ministries
 Optum
 Las Casa Family Clinic
 Lovelace
 Covenant
 Eastern NM Medical
 Chavez County Joy Centers
 In support with health council (*using Unite Us*) and senior centers in Roswell, Lake Arthur, and Dexter
 Charitable Food Provider: Roadrunner and Meals on Wheels NM
 Transportation Providers: Joy Centers (seniors and elderly), Roswell Transit and Dial A Ride, Disabled American Veterans (DAV) Transportation, Southeast NM Veteran's Transportation Network
 Public Health Office: Dexter and Roswell
 SBHC: Roswell High SBHC, Goddard SBHC, and Mesa SBHC

Southwest Region

Luna County Potential Hub Sites

Colores United
 Veteran's Assistance Center
 Columbus Community Center
 Luna Community Center
 Ben Archer
 Deming Health Center
 In support with health council (*maybe interested in Unite Us*) and senior centers in Deming
 Charitable Food Provider: Roadrunner and Meals on Wheels NM
 Transportation Providers: Corre Caminos Bus, Disabled American Veterans (DAV) Transportation
 Public Health Office: Columbus and Deming
 SBHC: Ben Archer Deming SBHC

Hidalgo County Potential Hub Sites

Hidalgo Medical Services (*One Degree*)
 HMS Animas
 HMS Lordsburg
 Virden Community Center
 Animas Community Center
 In support with health council and senior centers in Lordsburg
 Charitable Food Provider: Roadrunner and Meals on Wheels NM
 Transportation Providers: Corre Caminos, Veterans Services Transportation, Disabled American Veterans (DAV) Transportation
 Public Health Office: Lordsburg
 SBHC: Lordsburg High Wellness Center

Southern NM Family Medicine Residency and Center for Health Innovation may provide support on efforts for both counties

Northwest Region

McKinley County Potential Hub Sites

The Community Pantry
 Black Rock Community Center
 Gallup Community Center
 Thoreau Community Center
 Crownpoint Veteran's Administration
 UNM
 Crownpoint Health Care
 Western New Mexico Medical
 In support with health council and senior centers in/with Crownpoint, Pinedale, Rock Springs, Iyanbito, Northside, Lake Valley, Pueblo Pintado
 Charitable Food Provider: The Community Pantry, sister food bank to Roadrunner and Meals on Wheels NM
 Transportation Providers: City of Gallup Transportation Office, Gallup Rural Transit, Disabled American Veterans (DAV) Transportation
 Public Health Office: Gallup
 Rural Hospital: Rehoboth McKinley Christian Health Care Services
 SBHC: Gallup and Zuni Teen Health Centers

San Juan County Potential Hub Sites

Economic Council Helping Others, Inc. (ECHO, Inc.)
 Bloomfield Community and Family Resource Hub
 Navajo Nation Department for Self Reliance
 Social and Safety Net Program
 Catholic Charities
 San Juan Regional Medical Center
 Northern Navajo Medical Center
 PMS Farmington
 San Juan Health Partners
 In support with health council and senior centers in/with Cudei (Shiprock), Farmington, and Blanco
 Charitable Food Provider: ECHO Inc., sister food bank to Roadrunner and Meals on Wheels NM
 Transportation Providers: Red Apple Transit, ADA Paratransit Dial A Ride, Navajo Transit System, SJRMC Community Van, Farmington Vet Center, Four Corners Transportation, Disabled American Veterans (DAV) Transportation
 Public Health Office: Bloomfield and Farmington
 SBHC: Newcomb SBHC, Dr. Taylor MacKenzie Health Center, Shiprock High School SBHC, NNMC Teen Life Center Tse Bit Ai Middle School, and Northwest Middle/High SBHC

NM SDOH Collaborative: Identify and Capacity-Build Hub Site Support Activities to address SDOH and Inventory SafetyNet Network

NM Closed Loop Referral: Capacity-Build on Referral Platform and State-wide Care Network

NM Primary Care Council: Capacity-Build and Support on Health Equity Best Practices

Federal: In 2023, CMS required all hospitals to screen adult inpatients on 5 social determinants (Housing, Food, Transportation, Utilities, Safety). In 2024, CMS requirements of healthcare that receive federal payment to address SDOH (ICD-10 Z Codes)

The Role of Every SBHC

- Being a collaborative member of the health care and education community
- Assessing career goals during preventative visits
- Supporting peer health education
- Providing shadowing and clinical rotations
- Connecting youth to other mentors and the health care community



Office for Community Health Role

Health Extension Regional Offices - HEROs aim to link University of New Mexico Health Sciences Center programs and resources to rural and underserved communities across the mission areas of education, clinical service, research and health policy with the vision of working with community partners to improve health and health equity throughout the state.

Community Health Worker Initiatives – The Community Health Worker Initiatives Unit was created in 2014 as part of the University of New Mexico, Office for Community Health with the mandate to design, implement, and evaluate projects that utilize CHWs as a strategy to increase New Mexican’s well-being, promote health equity, and minimize the negative impacts associated with the social determinants of health.

Area Health Education Center - The New Mexico AHEC belongs to a federally funded national network dedicated to growing a diverse health care workforce and serving rural and underserved communities by offering innovative health career curricula to pre-collegiate students.

Health Extension Regional Offices

HERO Agents

- Live in community
- Link local health needs with UNM resources
- Improve local health services and systems
- Encourage youth to finish school and enter health careers
- Recruit and retain a local health workforce
- Bring latest research and health care practices to community
- Strengthen community capacity to address local health problems

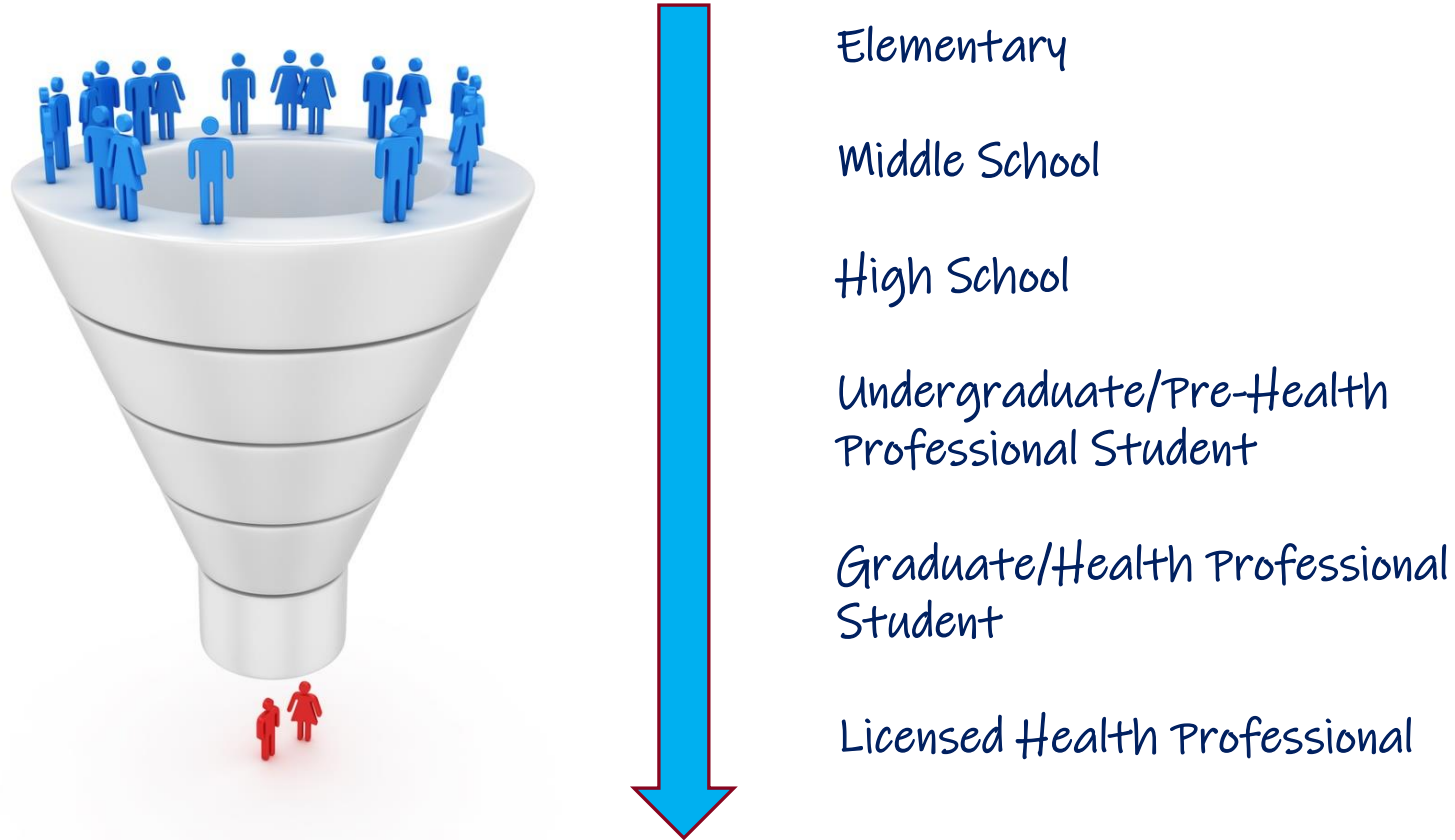


Community Health Worker Initiatives

The mission of the CHWI is to contribute to the enhancement and integration of Community Health Workers (CHWs) into the NM workforce in an effort to increase health equity.

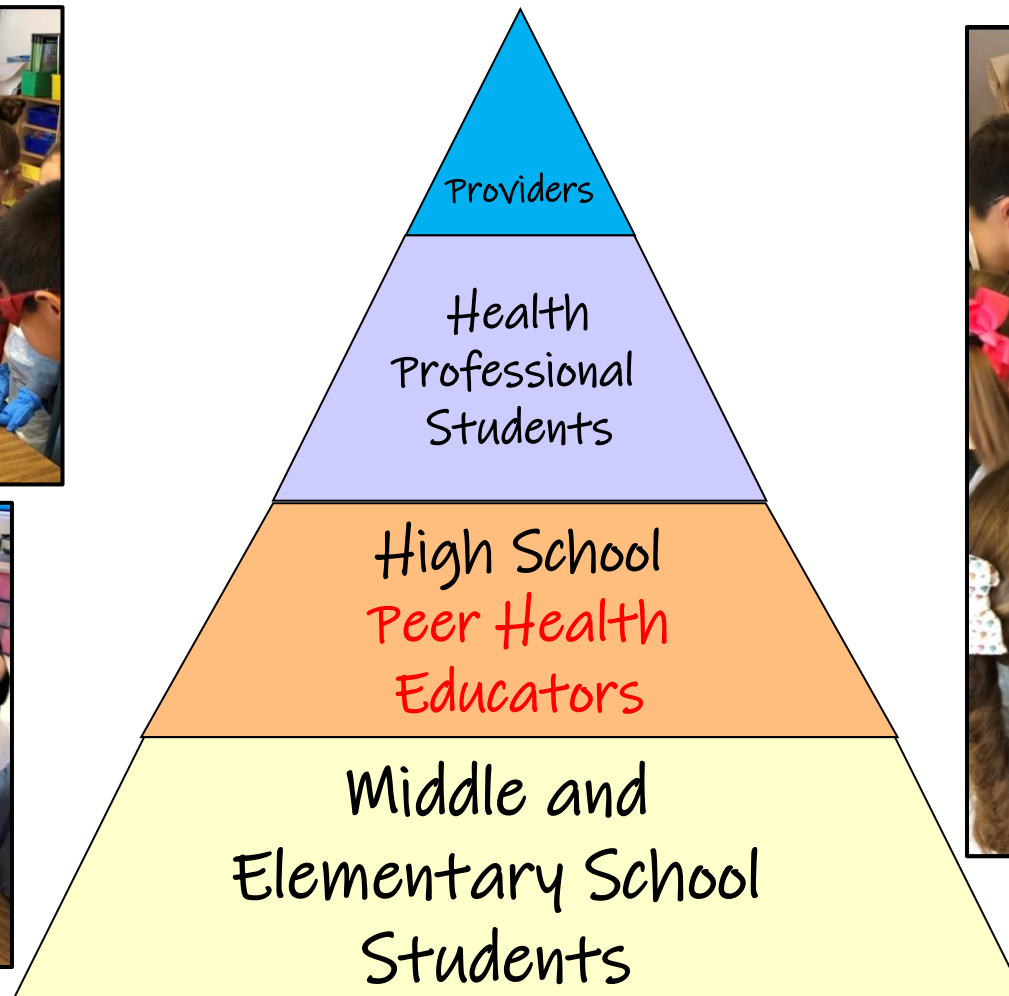


Clinical Rotation Coordination Pilot – “Bursting the Bottleneck in the Funnel”



Sowing many seeds yields the best **HARVEST**

Health Care Workforce Multipliers



Pyramiding "WE"llness!