

Every Day Counts!

Building School and Data-Sharing Partnerships to Support School Attendance in Your Community

Panel: Matthew Broad, MPH
Denise Hughes, MS
Jaytoya Manget, DNP, MSPH, FNP

Moderator: Danielle Dooley, MD, MPhil, FAAP

1

Disclosures

With respect to the following presentation, there has been no relevant (direct or indirect) financial relationship between the presenters or other activity planners and any ineligible company in the past 24 months which would be considered a relevant financial relationship.

The views expressed in this presentation are those of the presenter(s) and may not reflect official policy of Community Health Center, Inc. and its Weitzman Institute.

We are obligated to disclose any products which are off-label, unlabeled, experimental, and/or under investigation (not FDA approved) and any limitations on the information that are presented, such as data that are preliminary or that represent ongoing research, interim analyses, and/or unsupported opinion.

2

Learning Objectives:

1. Discuss the impact of school attendance on health and educational equity
2. Identify opportunities for systems change and transformation to facilitate data-sharing
3. Introduce a toolkit that assists in establishing partnerships in support of data-sharing and school attendance

3

Chronic Absenteeism

Why We May Not Notice Chronic Absence

SEPTEMBER	OCTOBER	NOVEMBER	DECEMBER	JANUARY
M T W Th F	M T W Th F	M T W Th F	M T W Th F	M T W Th F
X	X	X	X	X
X	X	X	X	X
X	X	X	X	X
X	X	X	X	X
X	X	X	X	X
X	X	X	X	X
X	X	X	X	X
X	X	X	X	X
X	X	X	X	X
X	X	X	X	X

Absences Add up
Chronic Absence = 18 days of absence = 2 days a month

US Department of Education. Chronic Absenteeism in the Nation's Schools. Accessed April 1, 2023 from <https://www2.ed.gov/datastory/chronicabsenteeism.html#four>

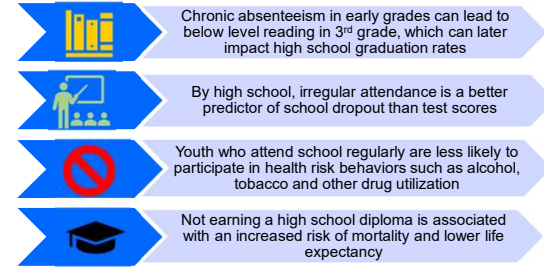
4

Chronic Absenteeism

- Pre-pandemic rates were around 16%
- Currently 33-40% of students are chronically absent
- Increases at the high school level
- Disproportionately affects
 - Students of color
 - Students from low income
 - Students with disabilities

5

Lasting Impacts of Absenteeism



6

Background

How can we engage a school and health system collaboration around school absenteeism?

- Physical and Behavioral Health Problems
- Social Needs
- Individual child and population level

7

Background

- FERPA vs HIPAA
- Understanding the limitations of health-system sharing with school nurses and the school district
- What data format is needed?
- What should the role of an HIE be?
- How can we (as a health system) consume the data?
- Suspension alerts
- School concerns – What matters to schools?

8

Collaborative for Attendance Resources in Education and Health (CARE-H)



9

CARE-H Overview

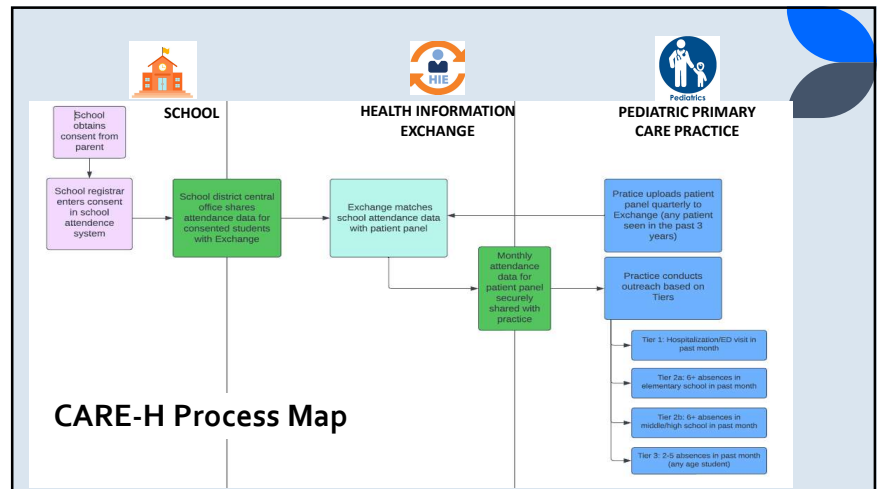
- 2017- MOUs signed, consent developed
- Partnered with CRISP Health Information Exchange (HIE) to transmit attendance data
- 2019- began consenting families
- 2020- funding from United Health Foundation
- 2021-2022- first full year of data collection

10

CARE-H Overview

- Year 1:
 - 6 pilot schools
 - 2 health centers
- Year 2:
 - 8 additional schools
 - Removed 1 health center; added 1 health center + mobile unit
- School based champions
- Monthly meetings with school system attendance team

11



12

CARE-H Outreach

- Conducted by SW team- health educator, social worker and 2 community health workers
- Tiered system
 - Tier 1: Students with an ED visit or hospitalization
 - Tier 2: Students with 6+ absences
 - Tier 3a: Students with 4-5 absences
 - Tier 3b: Students with 2-3 absences
- Up to 3 phone attempts
- Email to all students with absences
- Discuss causes of absences; screen for social determinants of health needs
- Referrals to medical home, school or social resources
- Follow up on social resources given

13

CARE-H Outcomes

2021-2022 School Year

478 Notifications

Attempted phone outreach: 108 (23%)

Attendance Emails Sent: 308 (64%)

Successful Outreach: 84 (78%)

1364 minutes of outreach and care coordination

23 medical appointment and social referrals

Tier 1 (ER visits/hospitalizations): 19

Tier 2a (6+ absences in elementary): 21

Tier 2b (6+ absences in middle/high): 133

Tier 3 (2-5 absences): 305

14

CARE-H Outcomes

2022-2023 School Year (through May 2023)

567 Notifications

Attempted phone outreach: 259 (46%)

Attendance Emails Sent: 285 (50%)

Successful Outreach: 186 (72%)

2112 minutes of outreach and care coordination

43 medical appointment and social referrals

Tier 1 (ER visits/hospitalizations): 25

Tier 2 (6+ absences): 140

Tier 3a (4-5 absences): 107

Tier 3b (2-3 absences): 295

15

Data Access for Student Health (DASH)

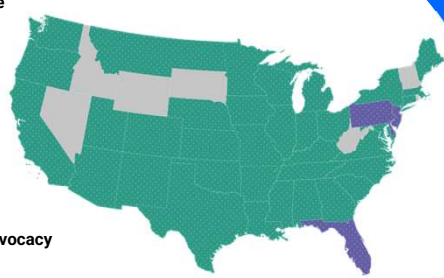
NEMOURS
CHILDREN'S HEALTH.

16

16

Nemours Children's Health

- Primary, Specialty, Hospital & Urgent Care**
 - 72 care locations in 4 states
 - Value-Based Services Organization
 - 54,000 SDoH Screenings
 - 1.6 million patient encounters
 - 8,600 associates
 - 1,130 employed physicians
 - 3,900 trainees
 - 85,492,310 Radiology Images Reviewed*
 - \$1.7 billion annual revenue
- National Office of Population Health & Advocacy**
 - Early Childhood Education
 - Nemours Children's ReadingBrightstart!
- Nemours KidsHealth – available in 50 states and worldwide**
 - 171 million annual visitors
 - 300 million page views



17

17


DASH Overview

- Launched in one school district 2021**
- Consent**
 - Opt-in
 - HIPAA and FERPA compliant
- Alerts**
 - 3 consecutive days or 10 days during a school year
- Other info**
 - IEP/504 plan status
 - Total days missed
 - Total excused and unexcused absences

18

18

How does the data flow?



Colonial School District → Data Service Center → Delaware Health Information Network (DHIN) → Pediatrician Offices

Enrolled student demographic data and absenteeism data (from DHIN)

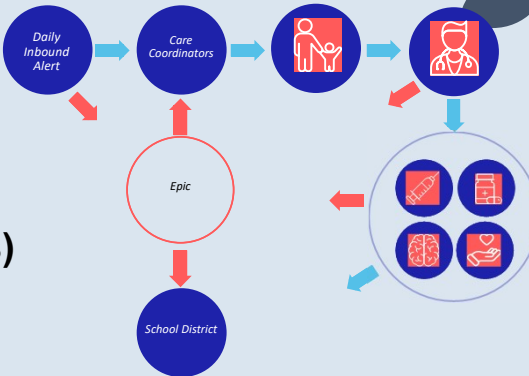
Demographic file, 3-day and 10-day alerts based on ENS Panels (from Pediatrician Offices)

Student to Patient Matching utilizes the Delaware Health Information Network's existing matching algorithms, combined with patient panel subscriptions already in place for the state-wide Encounter Notification Service

19

19

What happens next? (Nemours)



Daily Inbound Alert → Care Coordinators → Patient → Doctor → Medical Services

School District ↔ Epic ↔ Care Coordinators

20

20

DASH by the Numbers

September 2021 – June 2023

- 9,132 students in the School District
- Over 1940 students have been signed-up for the DASH program
- 610 have a Nemours PCP

2021 – 22 School Year

- 243 students generated 501 alerts for missing 3 consecutive days*
- 66 students generated 71 alerts for missing 10 or more days during the school year

*COVID heavily impacted numbers

2022 – 23 School Year

- 64 students generated 333 alerts for missing 3 consecutive days
- 91 students generated 281 alerts for missing 10 or more days during the school year

21

Care Coordination

March 28, 2022 – May 27, 2022

- 88 alerts
- 64 total outreach
- 7 unique school escalations (10 total)

2022 –23 School Year

- 689 alerts
- 105 successful outreaches

Outcomes

- Patients scheduled for WCVs, Behavioral Health Services, sick visits, specialist, SBHCs
- Medication education
- Coordination with school nurse/counselor
- SDOH needs addressed

22

Epic Integration

The screenshot displays the Epic EMR interface. On the left, a 'School Data' summary shows: Total member days: 21, Total days absent: 4, Total excused absent: 0, Total unexcused absent: 4, First day of absent: 09/27/22, Last day of absent: 09/29/22, IEP Plan: No, 504 Plan: No. The main area shows a patient record for a missed school day on 09/29/22, with a note: 'Patient has been absent from school 10 days or more'. A 'Flowsheet Rows' table is visible at the bottom.

23

Conversa

- Will manage the 3-day alerts
- Script complete
- Chat build finalization
- Dashboard training

The screenshot shows the Conversa chatbot interface. It features a series of prompts to help parents understand why their child is absent from school. The prompts include: 'Please tell us why your child been absent from school?', 'Please tell us more about what's been keeping your child from school.', 'Please tell us why your child been absent from school?', and 'Would you like a call from one of our Care Coordinators?'. The interface includes buttons for 'Let's go', 'Something else', 'Someone else is sick', 'Transportation issue', 'Yes please', and 'No thank you'.

24

Lessons Learned & Next Steps

Lessons Learned

- False positives – no impactable (COVID, vacation, tardy marked as absent)
- School calendars are complicated, create gaps in data
- ENS to EHR integration was designed around encounters (such as ED Visits).
- School Nurse might not be right point of contact.

Next Steps

Healthy Planet registry-based analysis

Looking at Patterns and Geography - Population level

25



Mission

Trenton Health Team (THT) is dedicated to improving the health and well-being of the greater Trenton community in partnership with residents and stakeholders.

Having achieved national recognition since its founding in 2006, THT is now one of four State-designated Regional Health Hubs focused on addressing the social determinants of health and achieving equitable health outcomes.

26

26

Trenton Health Information Exchange (HIE)

Launched in January 2014, the Trenton HIE Allows authorized users to share integrated patient records to support treatment decisions and strategies

Trenton HIE includes:

Real-time clinical data from partners such as:*

- Capital Health
- Henry J. Austin Health Center
- Labs (Bio-Reference, LabCorp, Quest)
- Robert Wood Johnson Hamilton

Medicaid Claims Information from Mercer County Residents who seek care statewide

PowerSchool attendance data (as of September 2019)

*Up-to-date list available at
<http://www.trentonhealthteam.org>

27

27

Linking Data for Student Success

Funded through the Princeton Area Community Foundation

Our Goals:

- Integrate attendance data (PowerSchool) into Health Information Exchange (HIE)
- Identify students who are chronically absent and have health issues
- Facilitate students referrals to partner services (after consent)
 - Outreach to be conducted by school nurse or parent liaison

28

28

Identifying Students Needing Assistance

29

29

Key Metrics at the Student Level

- Chronic absenteeism
 - Over past year
 - Over time
- Chronic conditions such as:
 - Asthma
 - Obesity
 - Neurodevelopmental disorders
- Encounters with emergency department / hospital admissions

30

30

Chronic Absenteeism Toolkit

Chronic Absenteeism
Reduction Effort

PLAYBOOK

TABLE OF CONTENTS

- [Overview](#)
- [Chronic Absenteeism & Health](#)
- [1. Engage & Support Partners](#)
- [2. Address Legal & Technical Aspects](#)
- [3. Implement Outreach to Reduce Barriers](#)
- [Conclusion & Resources](#)
- [CARE Partners & Acknowledgements](#)
- [Citations](#)

31

31

THREE WAYS TO ADDRESS CROSS-SECTOR DATA SHARING EFFORTS

1. Engage & Support Partners

- Know the drivers of chronic absenteeism.
- Identify who the decision makers are and how to garner buy-in.
- Determine what partners and stakeholders need to be engaged, including families and youth.
- Identify roles and responsibilities.

2. Address Legal & Technical Aspects

- Ensure to gather signed consent forms to meet HIPAA and FERPA requirements.
- Determine how to share data and ensure information systems can communicate.

3. Implement Outreach to Reduce Barriers

- Use the data to identify families and youth in need.
- Identify staff and develop messaging to contact these families.
- Identify and share resources to help families overcome barriers to school attendance.
- Support communication among partners and stakeholders.

32

32

Join Our Learning Collaborative

Email dyett@ad-solutions.org or scan QR code below



33

Continuing Education Credits

In support of improving patient care, this activity has been planned and implemented by the School-Based Health Alliance and Community Health Center Inc. and its Weitzman Institute and is jointly accredited by the Accreditation Council for Continuing Medical Education (ACCME), the Accreditation Council for Pharmacy Education (ACPE), and the American Nurses Credentialing Center (ANCC), to provide continuing education for the healthcare team.

This conference is intended for Nurses, Nurse Practitioners, Physicians, Physician Assistants/Associates, Psychologists, Registered Dietitians, and Social Workers

Please go to the link for the CME web platform (Weitzman Education) posted in the mobile app to complete the post-session survey to access your continuing education credit.

A comprehensive certificate will be available in the CME platform after completing the post-session surveys for all sessions you attended.

34