

weitzman institute inspiring primary care innovation

Financial Disclosures

- With respect to the following presentation, there have been no relevant (direct or indirect) financial relationship between the presenters/activity planners and any ineligible company in the past 24 months which would be considered a relevant financial relationship.
- The views expressed in this presentation are those of the presenters and may not reflect official policy of Moses/Weitzman Health System, Inc. or its Weitzman Institute.
- We are obligated to disclose any products which are off-label, unlabeled, experimental, and/or under investigation (not FDA approved) and any limitations on the information that are presented, such as data that are preliminary or that represent ongoing research, interim analyses, and/or unsupported opinion.


1

1

weitzman institute inspiring primary care innovation

CME and CE Information

In support of improving patient care, this activity has been planned and implemented by the School-Based Health Alliance and Moses/Weitzman Health System, Inc. and its Weitzman Institute and is jointly accredited by the Accreditation Council for Continuing Medical Education (ACCME), the Accreditation Council for Pharmacy Education (ACPE), and the American Nurses Credentialing Center (ANCC), to provide continuing education for the healthcare team.



Through Joint Accreditation, credits are also available under the following bodies:

- American Academy of PAs (AAPA)
- American Dental Association's Continuing Education Recognition Program (ADA CERP)
- American Psychological Association (APA)
- Association of Social Work Boards (ASWB)
- Commission on Dietetic Registration (CDR)

2

The Weitzman Institute was founded by **Community Health Center, Inc.** and is part of the **MOSES/WEITZMAN Health System**

weitzmaninstitute.org

2




**SBHC Policy Landscape
State and Federal Updates**


Wednesday June 28, 2023
Session: F6

3


TODAY'S PRESENTERS




Jacquelyn Christensen, PhD
Vice President of Quality, Research & Evaluation



Katherine Cushing, MPH
Senior Program Manager of Quality, Research & Evaluation



Suzanne Mackey, MPH
Vice President of Policy & Public Affairs

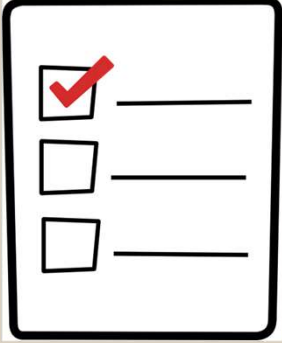



© School-Based Health Alliance 2022

4

Objectives

- Summarize key findings from SBHA's 2023 State Policy Survey
- Compare the current SBHC policy landscape to that of 2016-17
- Discuss the implications of SBHC state-level policies on the field

5


Acknowledgements

Funding

- The School Health Services National Quality Initiative was supported by the Health Resources and Services Administration (HRSA) of the U.S. Department of Health and Human Services (HHS) under cooperative agreement number U61MC31885 with the Maternal and Child Health Bureau (MCHB). This information or content and conclusions are those of the authors and should not be construed as the official position or policy of, nor should any endorsements be inferred by HRSA, HHS, the U.S. Government, or any other foundation.

THANK YOU

- State Program Offices
- Title V Directors and Staff
- SBHA State Affiliates
- State-level SBHC Champions
- SBHA Staff- Tammy Alexander and Theresa Dominguez



© School-Based Health Alliance 2022

6

Background and Context




7

Our Policy Priorities

The School-Based Health Alliance advocates for policies at the federal level that sustain and grow SBHCs, while supporting the school-based health care field to advance policies at state and local levels.

- Federal support
- Health and Education Collaboration
- Workforce Development
- Medicaid Funding and Flexibility
- Funding for Health Centers



© School-Based Health Alliance 2022

8

Q&A

Who's Here?

Do you represent an:

- SBHC
- Sponsoring Org
- Affiliate
- State Program Office
- National Organization




9

State-Level Updates

School-Based Health Center
Policy Assessment Findings

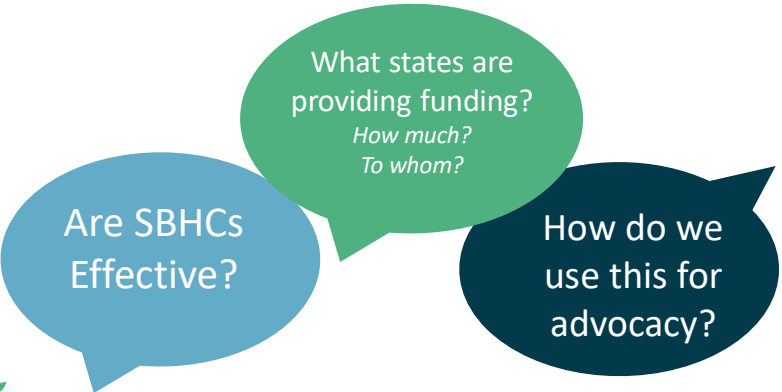




10

Are SBHCs Effective?

What states are providing funding?
*How much?
To whom?*

How do we use this for advocacy?

© School-Based Health Alliance 2022

11

State Relations: a National Perspective

State Affiliates


"While all lobbying is advocacy, not all advocacy is lobbying"

- Advocacy**
 - state and federal education, information, and awareness, enhancing an org's mission
- Lobbying**
 - Communication with elected officials about specific legislation, and urging a vote for or against
- Training**
 - Learning collaboratives, initiatives, consulting
- Community Engagement**
 - schools, parent/guardian, health entities, youth, etc.

State Program Offices

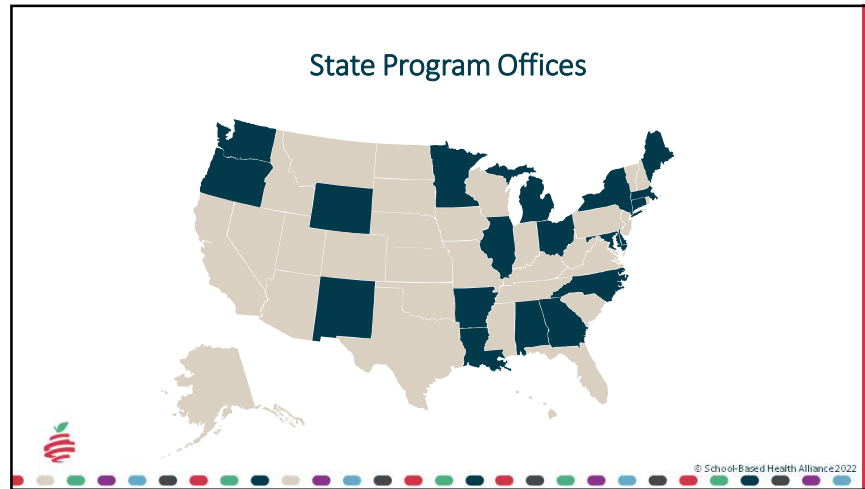
- Designated State Governmental Office**
 - DOE, DOH, etc.
- Oversees ***
 - Funding process
 - Certification
 - Compliance
 - Key Performance Measures
 - Data Collection and Reporting
 - Evaluation
 - Budgeting Requests
 - Technical Assistance and Training

* Depends on state & SPO stage of development

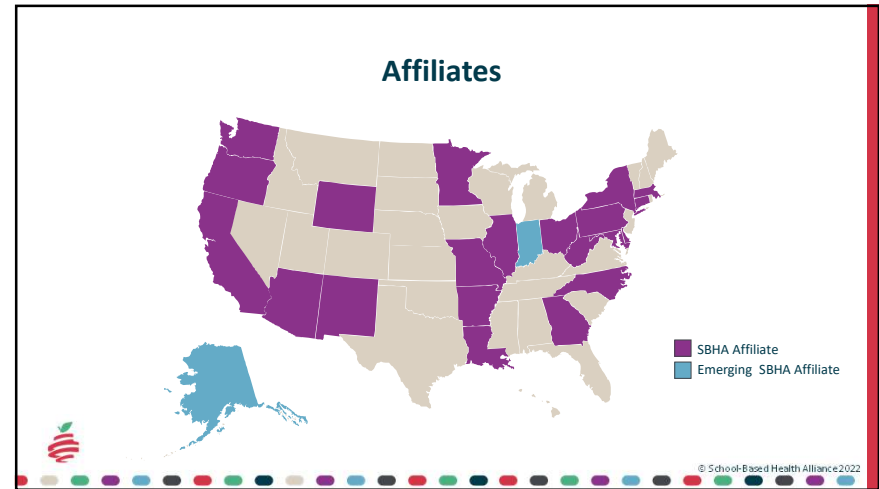


© School-Based Health Alliance 2022

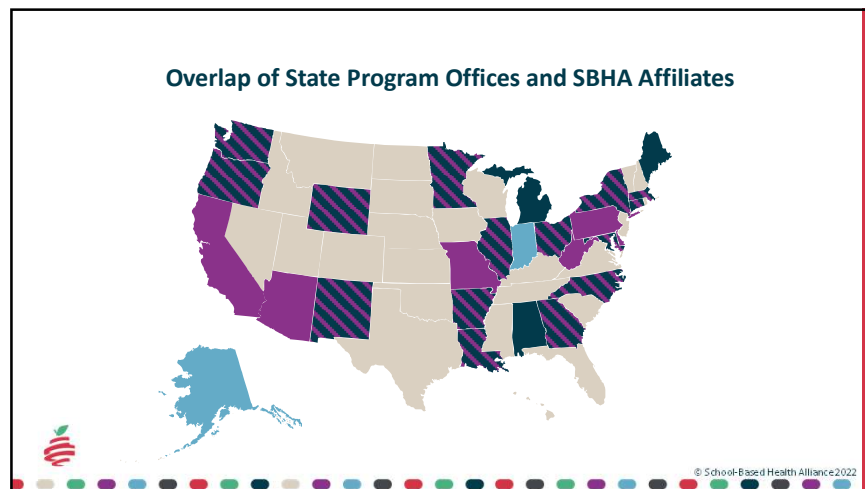
12



13



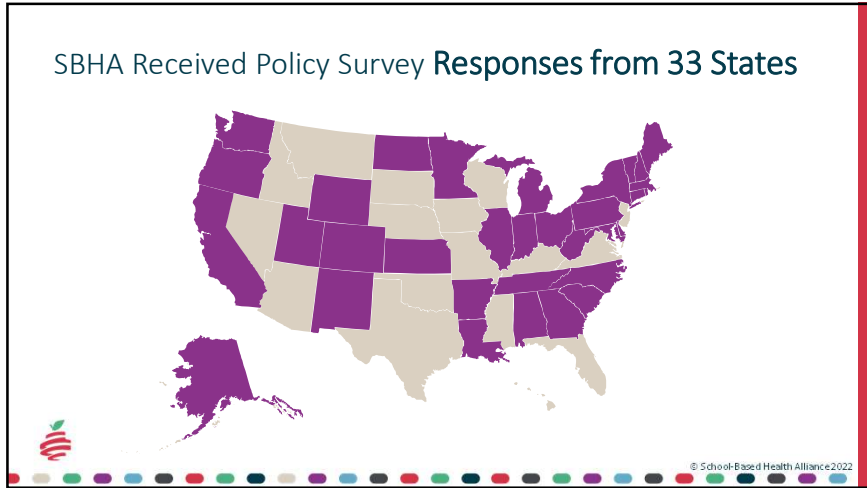
14



15

- ### Methods
- Online survey open 4/3/23-5/30/23
 - Targeted Outreach- One Response per State
 - SPO Contacts
 - Affiliate Contacts
 - State Title V (MCH Block Grant) Contacts
- © School-Based Health Alliance 2022

16

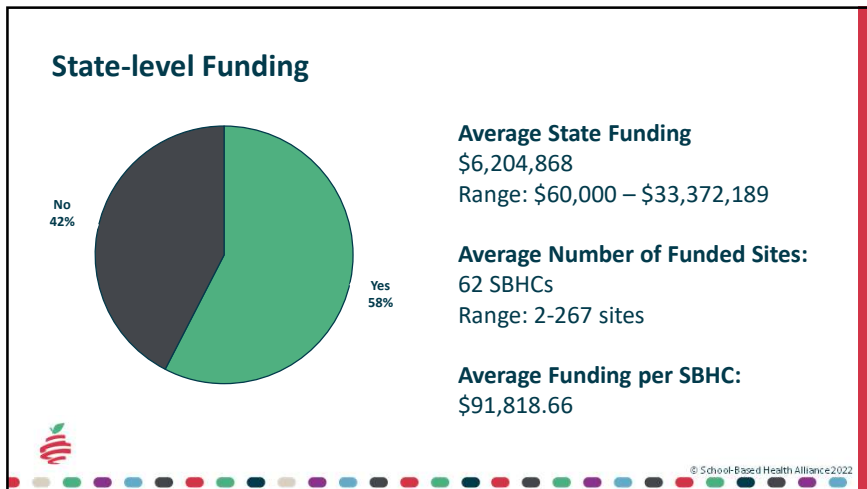


17

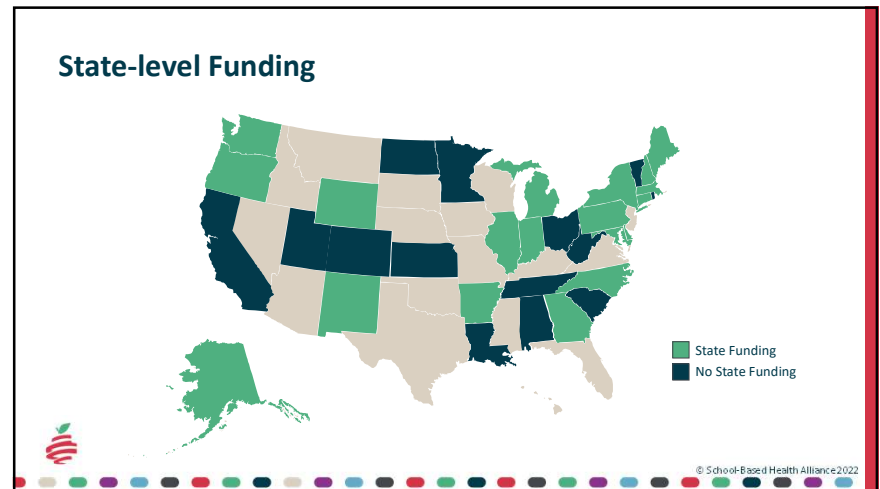
Survey Focus Areas & Findings

- Funding**
- Alignment**
 - Definitions
 - National Performance Measures
- Provision of Contraceptives**
- Other**
 - Partnerships
 - COVID Changes

18



19



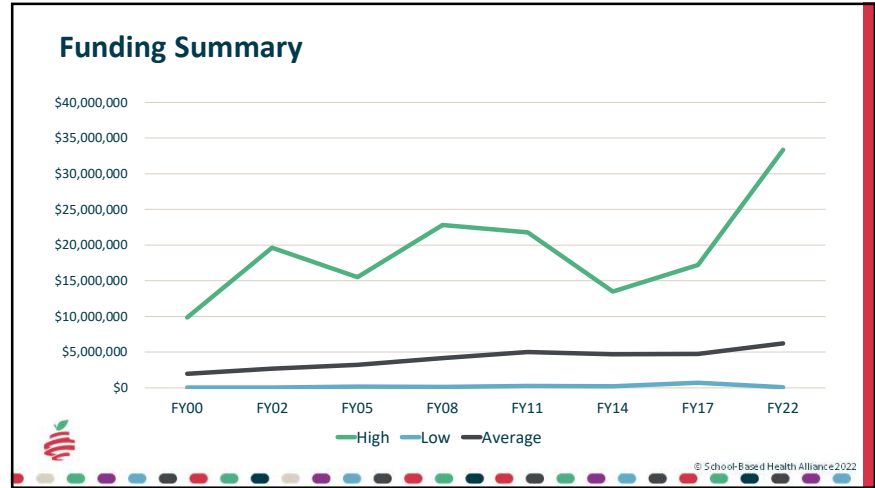
20

Funding Summary

	State Investment FY22 (n=18)	State Investment FY17 (N=16)	State Investment FY14 (N=18)
Total	\$111,687,634	\$76,211,963	\$85,100,000
Average	\$6,204,868	\$4,763,247	\$4,700,000
High	\$33,372,189	\$17,225,804	\$13,500,000
Low	\$60,000	\$700,000	\$200,000

© School-Based Health Alliance 2022

21



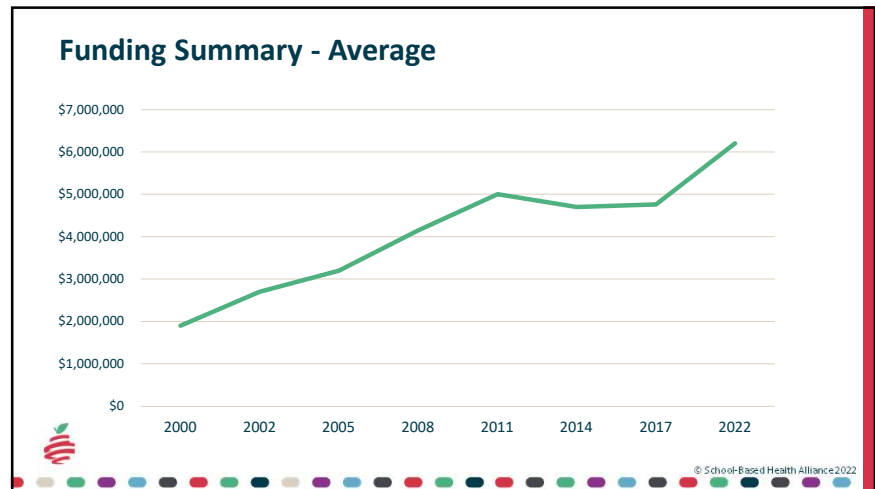
22

Funding Summary - Average

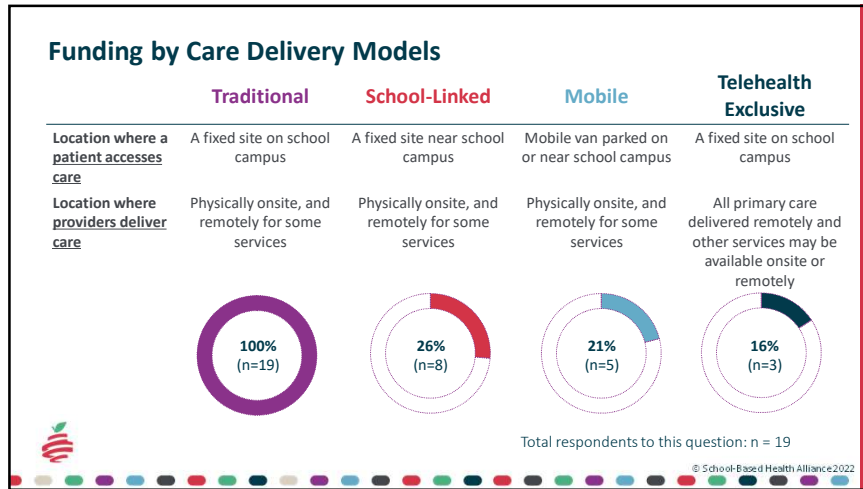
	Avg. State Investment	Avg. # SBHCs/State
FY05	\$3,200,000	37
FY08	\$4,150,000	43
FY11	\$5,000,000	49
FY14	\$4,700,000	51
FY17	\$4,760,000	47
FY22	\$6,200,000	62
% Change	94%	67.6%

© School-Based Health Alliance 2022

23



24



25

Factors Determining SBHC Funding

- Competitive, non-performance based**
 - Location/Free-reduced Lunch Rate
 - # of Days/Week Open
 - Service Delivery Model
 - # Students enrolled/users/visits
 - Service Offerings
- Non-competitive Flat Rate**

© School-Based Health Alliance 2022

26

What is an SBHC?

Federal Definition

SBHCs were first defined in federal law in the Children's Health Insurance Program Reauthorization Act of 2009 [PUB1003_PS \(congress.gov\)](https://www.congress.gov/bills/110/1032/1000/1000003/1000003PS) – pg 85

The Patient Protection and Affordable Care Act (2010) references this definition and expands on it, adding two new criteria:

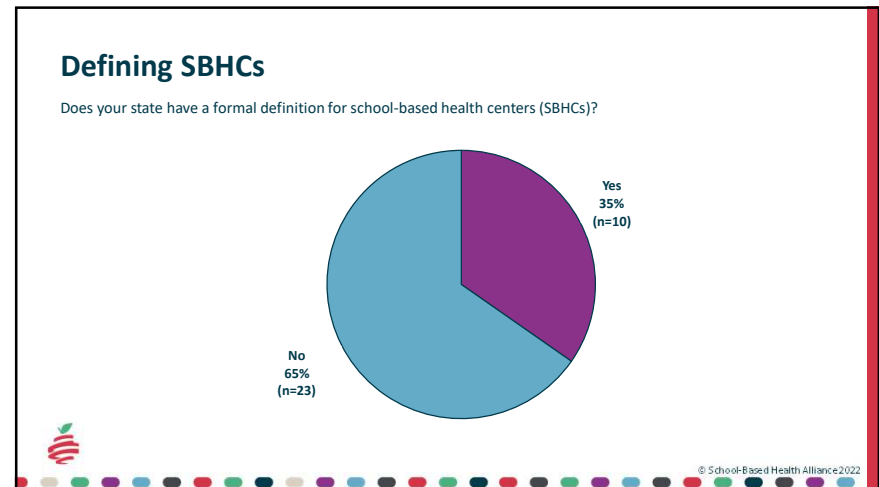
- provides, at a minimum, comprehensive primary health services during school hours to children and adolescents by health professionals in accordance with established standards, community practice, reporting laws, and other State laws, including parental consent and notification laws that are not inconsistent with Federal law; and
- does not perform abortion services.

[42 USC 280b-5: School-based health centers \(house.gov\)](https://www.congress.gov/bills/110/1032/1000/1000003/1000003PS)

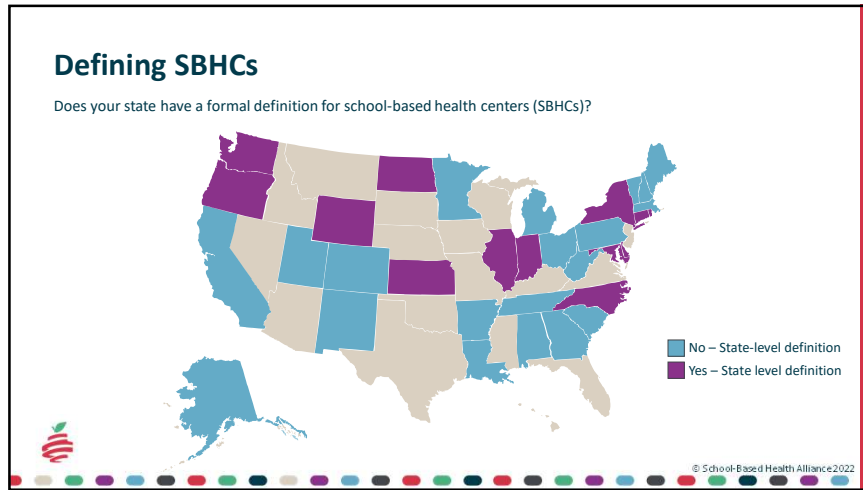
“(9) SCHOOL-BASED HEALTH CENTER.—
“(A) IN GENERAL.—The term ‘school-based health center’ means a health clinic that—
 “(i) is located in or near a school facility of a school district or board or of an Indian tribe or tribal organization;
 “(ii) is organized through school, community, and health provider relationships;
 “(iii) is administered by a sponsoring facility;
 “(iv) provides through health professionals primary health services to children in accordance with State and local law, including laws relating to licensure and certification; and
 “(v) satisfies such other requirements as a State may establish for the operation of such a clinic.
“(B) SPONSORING FACILITY.—For purposes of subparagraph (A)(iii), the term ‘sponsoring facility’ includes any of the following:
 “(i) A hospital.
 “(ii) A public health department.
 “(iii) A community health center.
 “(iv) A nonprofit health care agency.
 “(v) A school or school system.
 “(vi) A program administered by the Indian Health Service or the Bureau of Indian Affairs or operated by an Indian tribe or a tribal organization.”.

© School-Based Health Alliance 2022

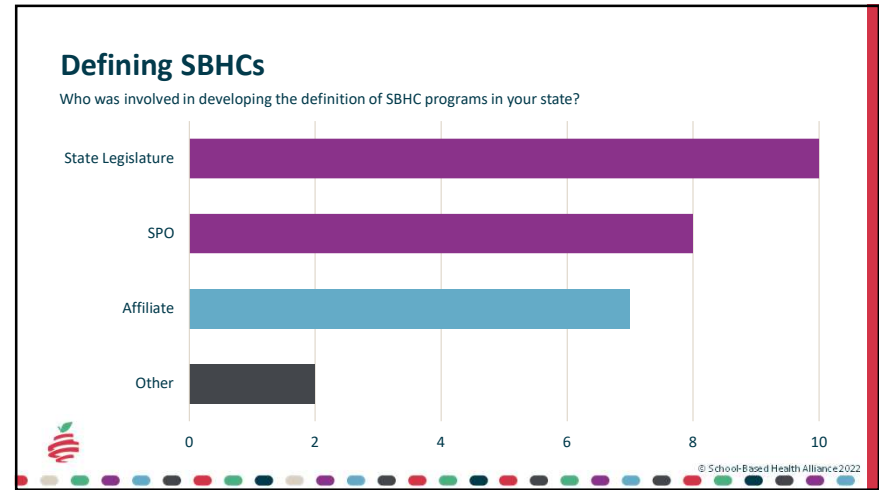
27



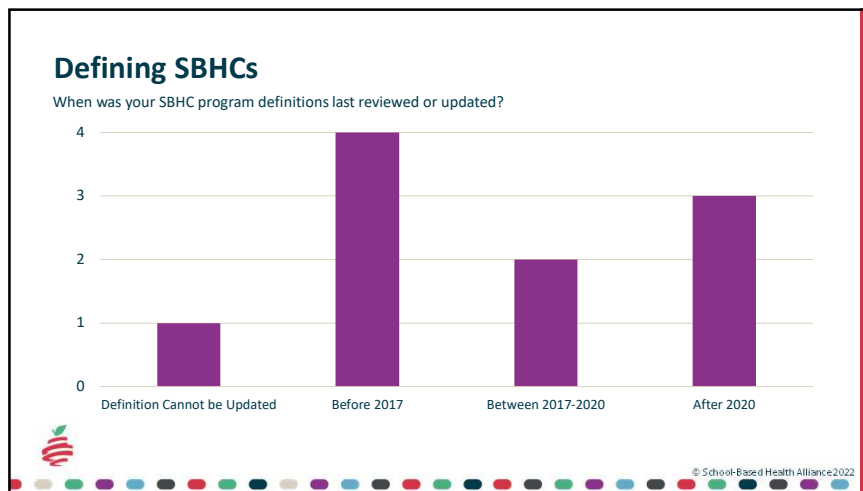
28



29



30



31

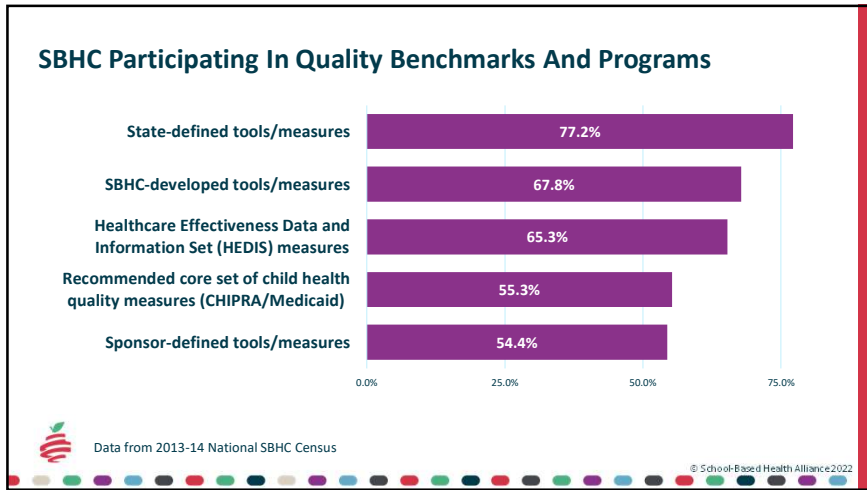
Are SBHCs Effective?

Do Students Actually Use Them?

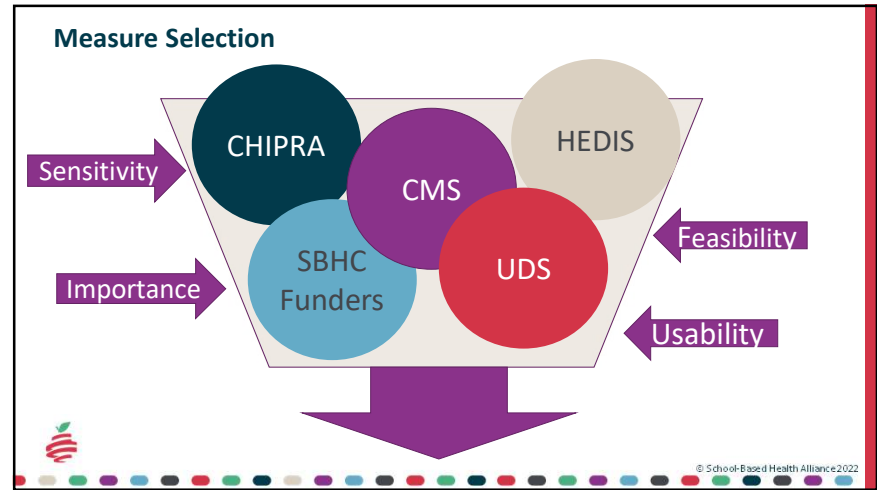
What the impact?

© School-Based Health Alliance 2022

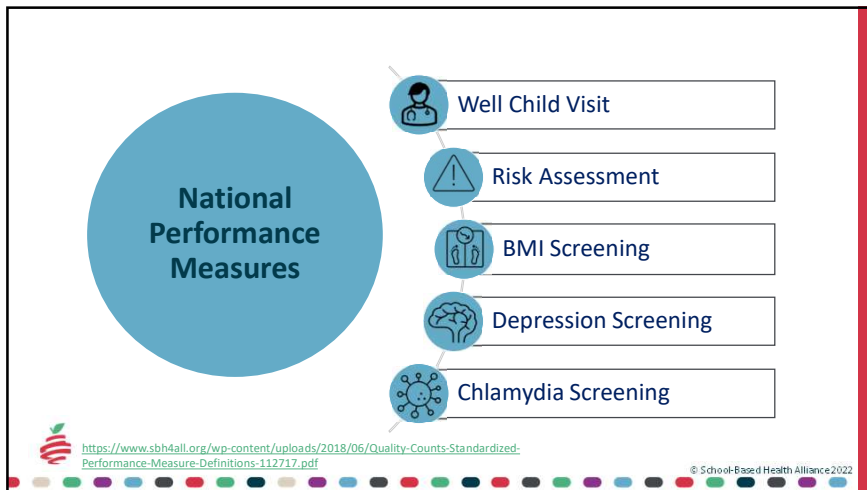
32



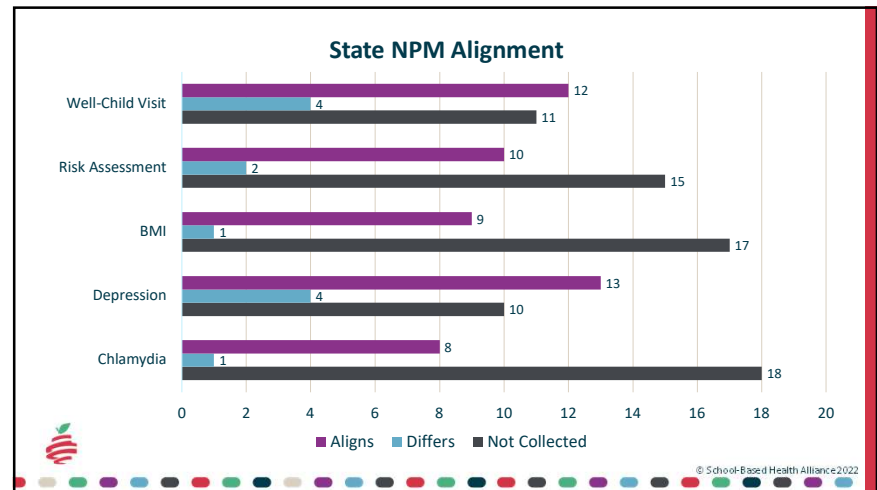
33



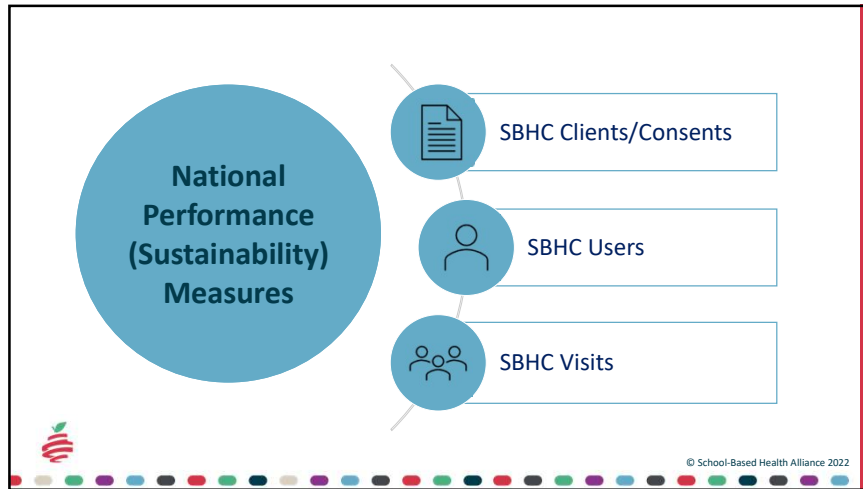
34



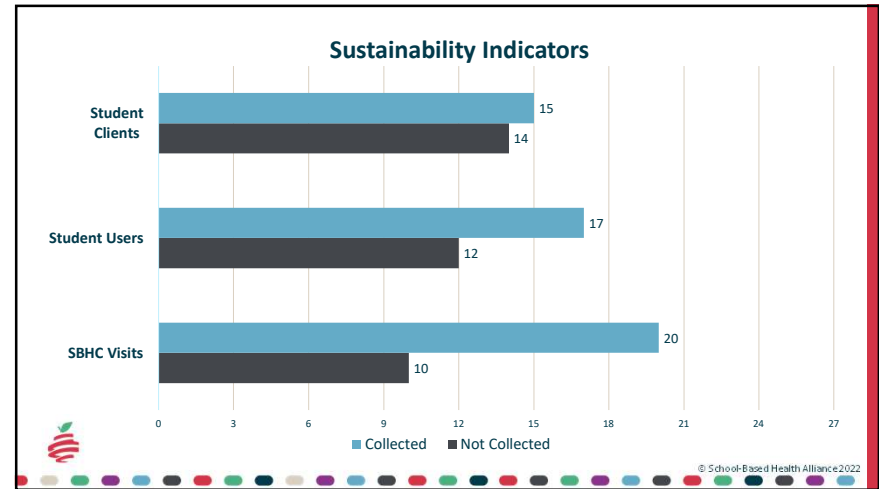
35



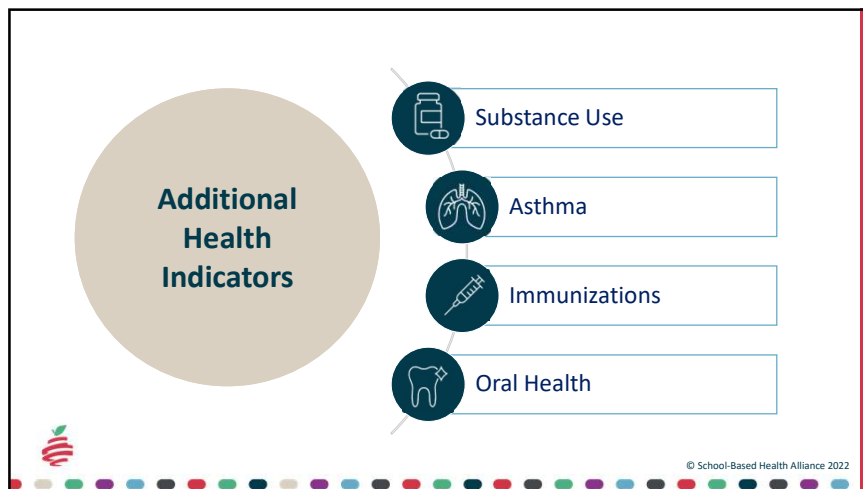
36



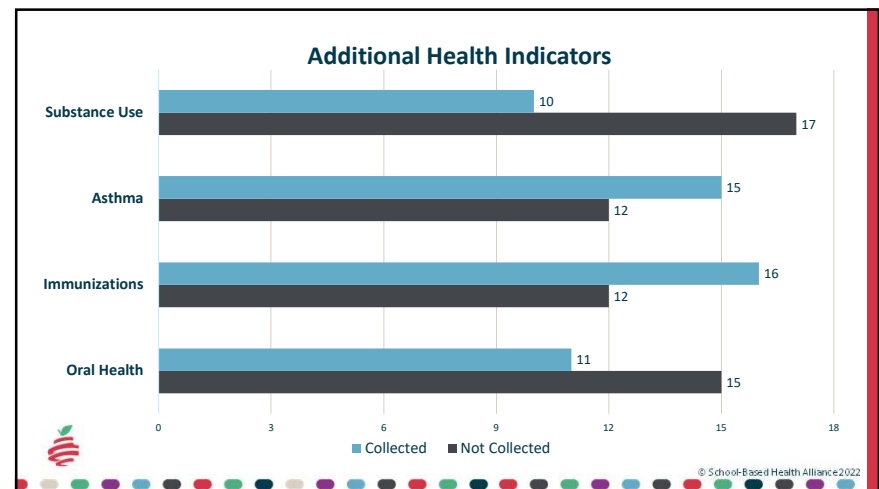
37



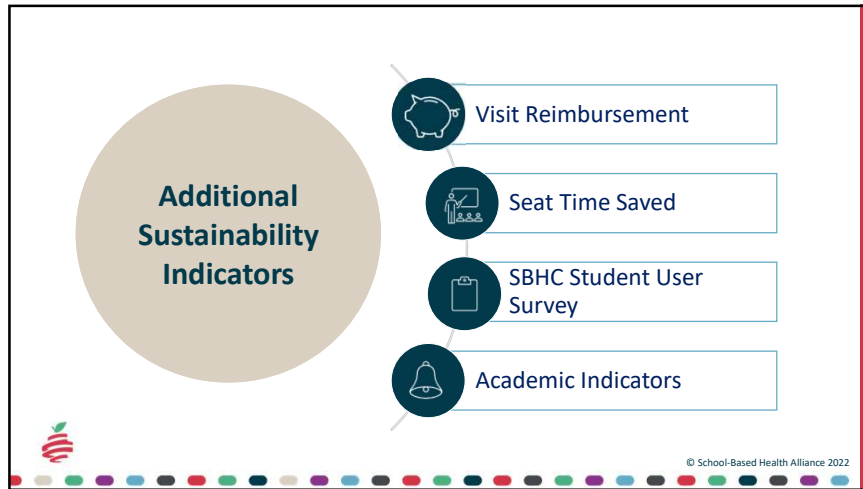
38



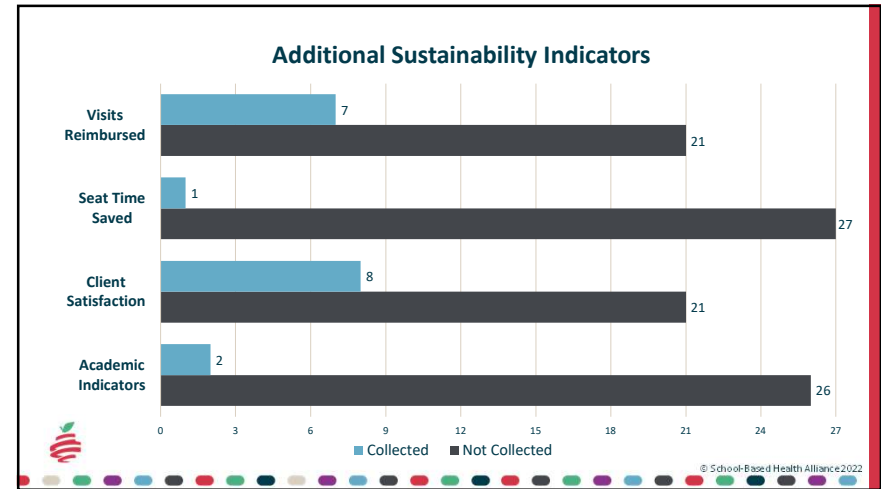
39



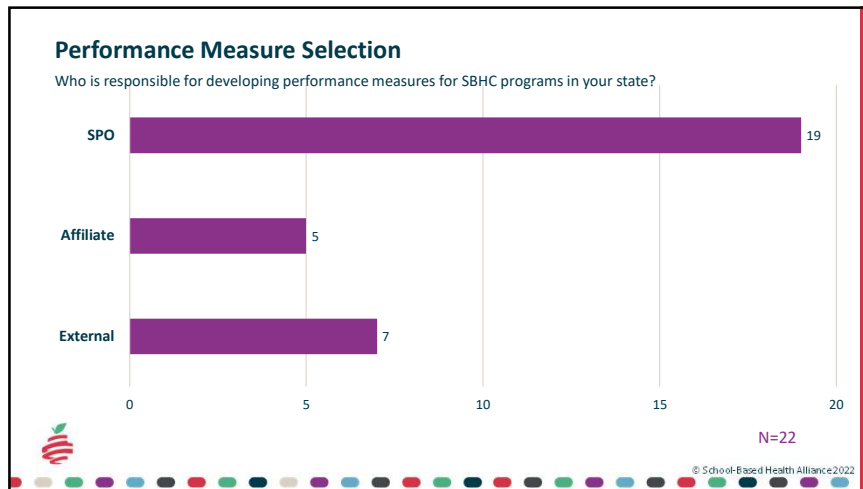
40



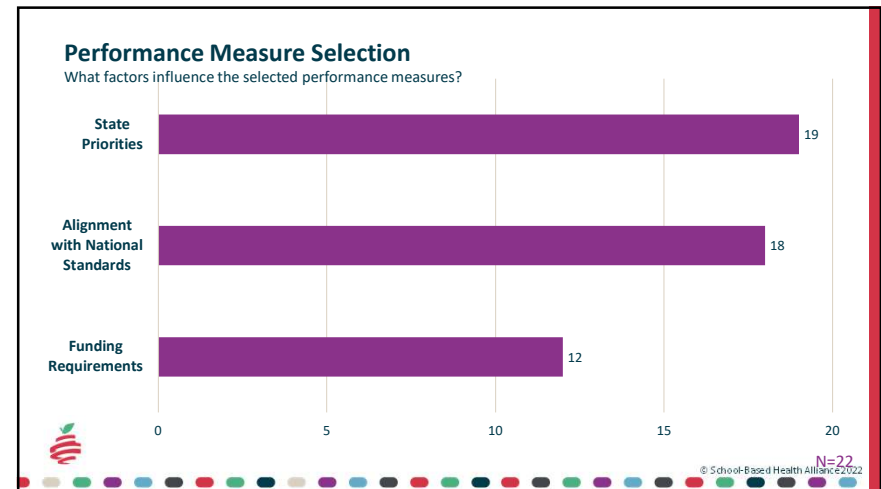
41



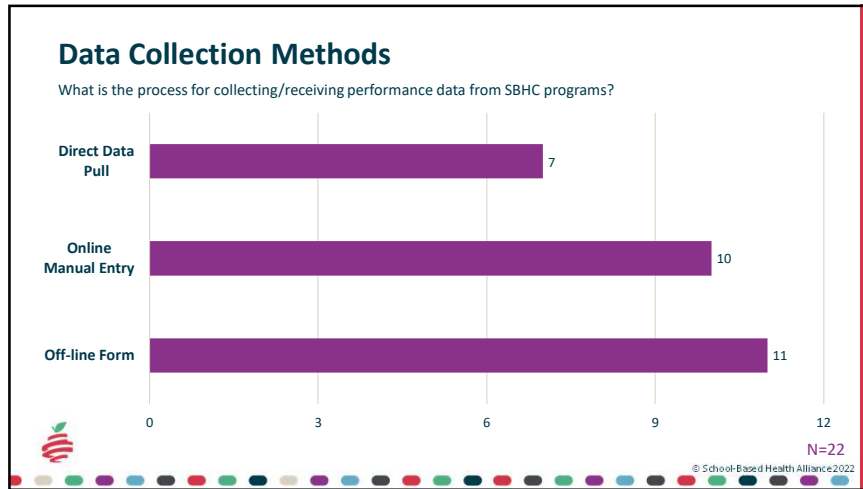
42



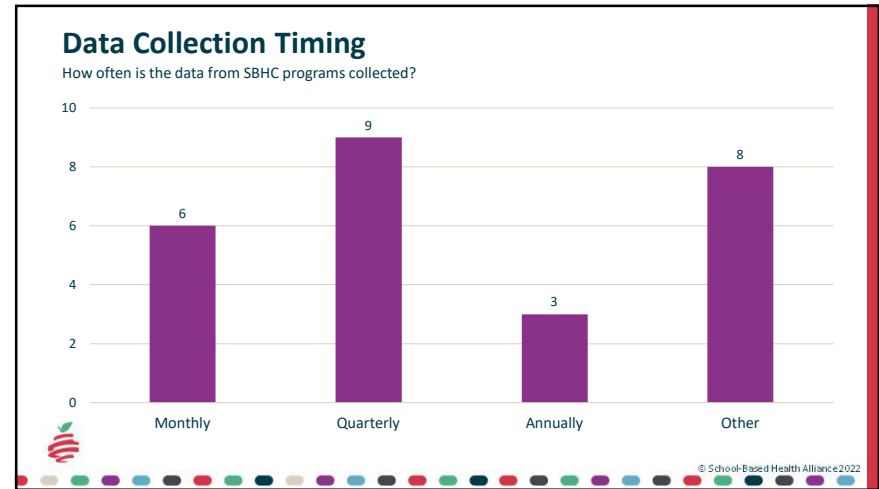
43



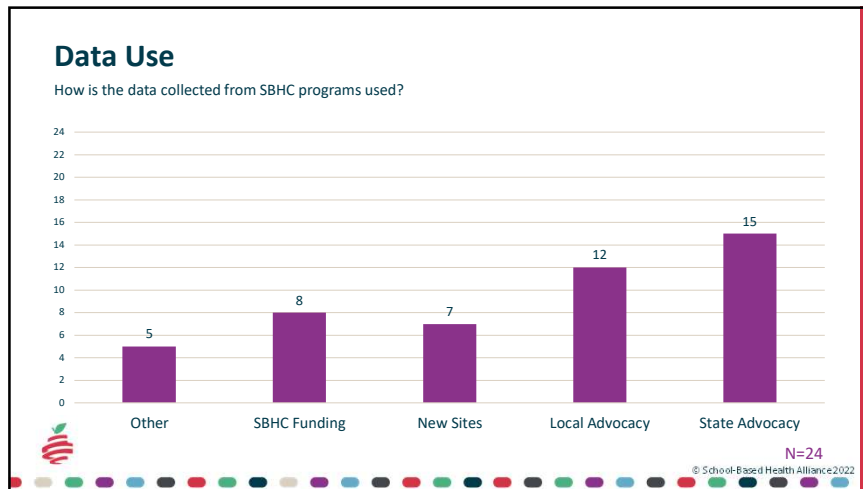
44



45



46

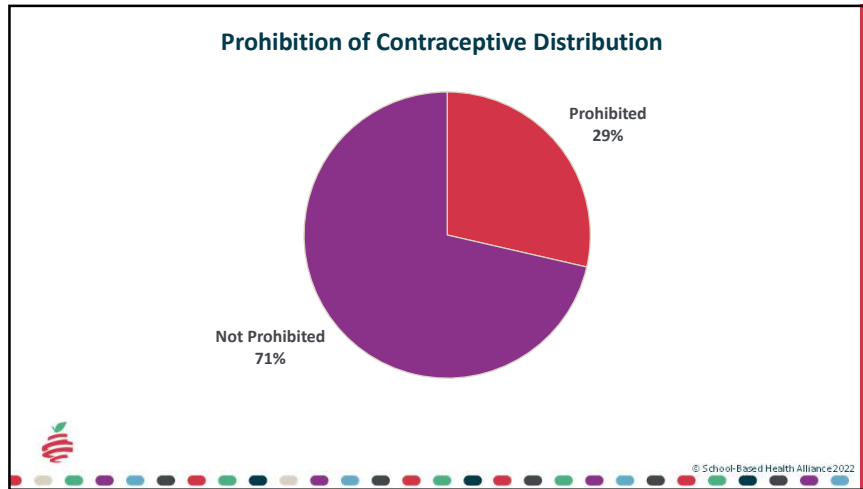


47

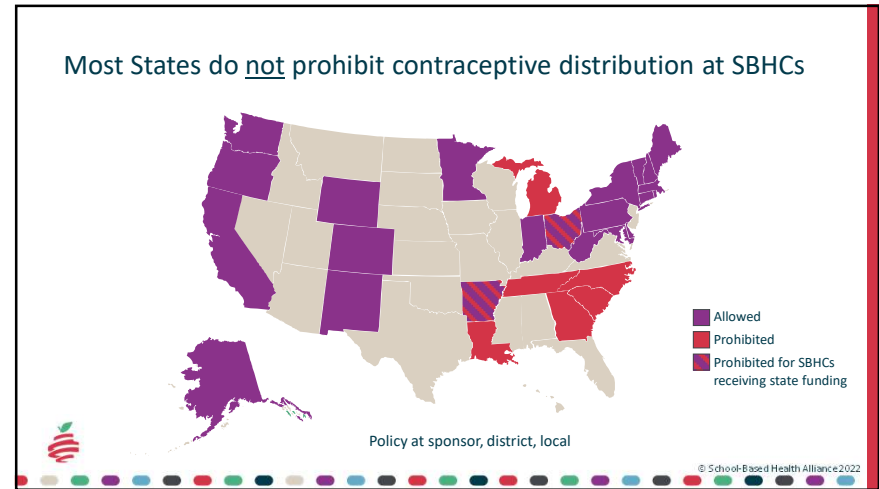
How do you use data to advocate for SBHCs within your state, community, or school?

© School-Based Health Alliance 2022

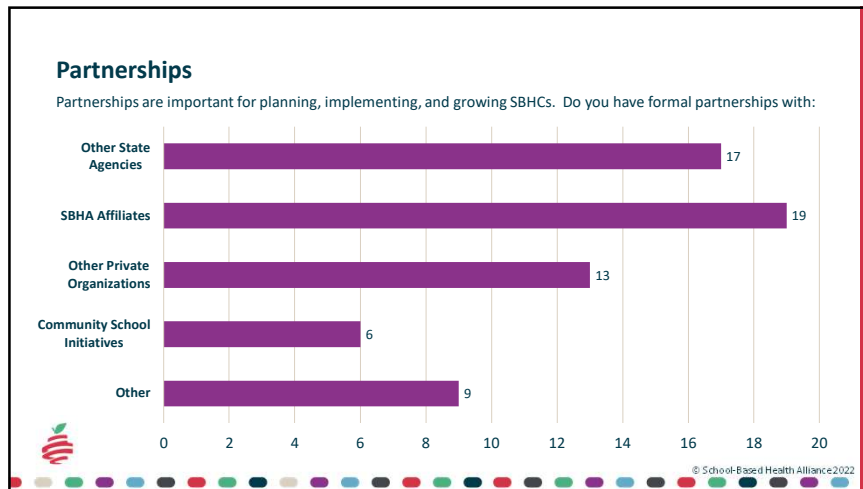
48



49



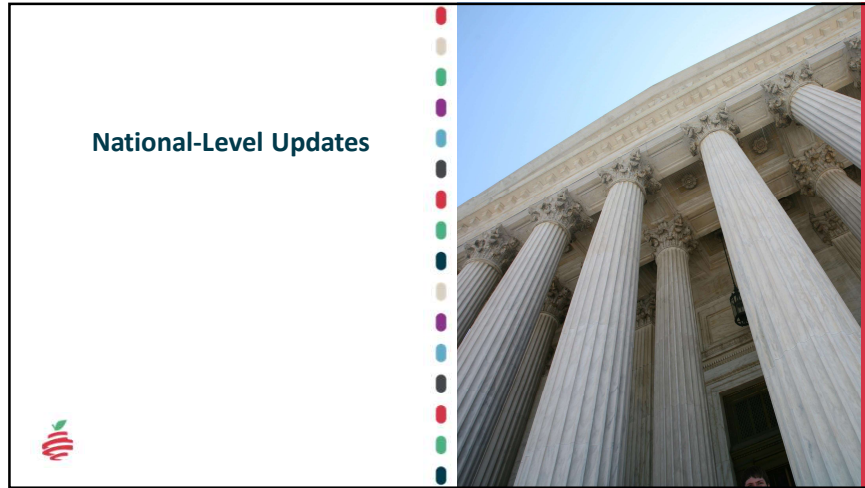
50



51

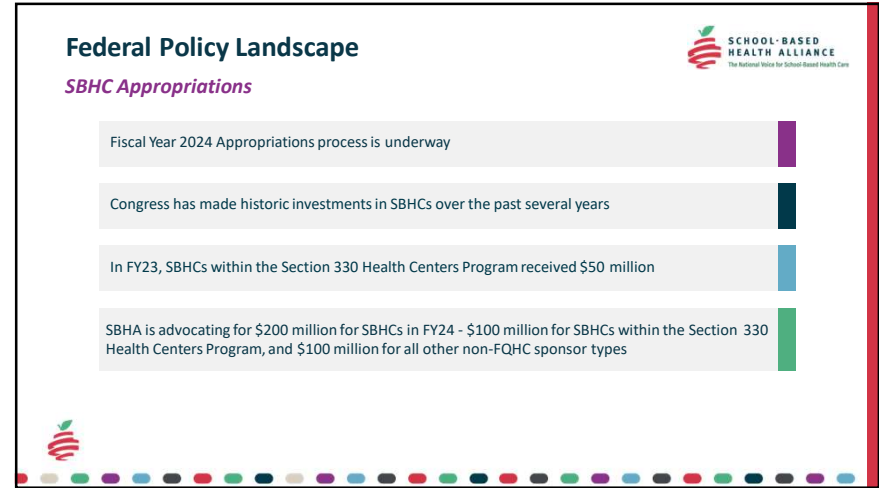


52



National-Level Updates

53

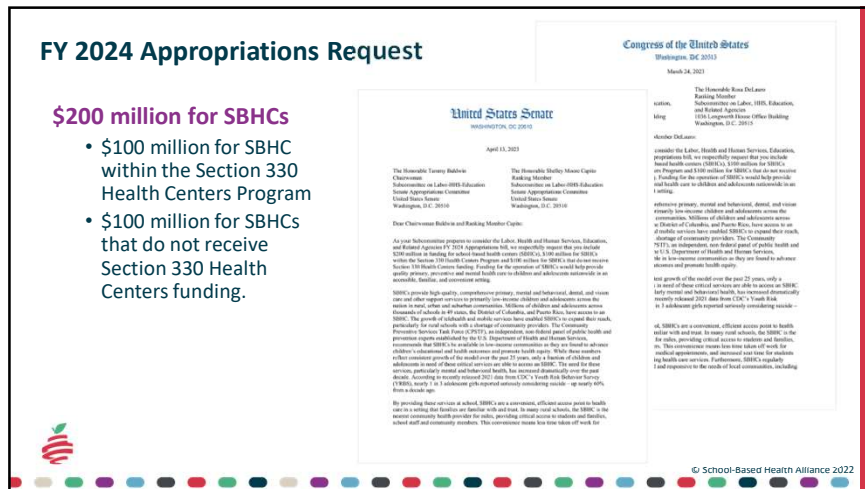


Federal Policy Landscape

SBHC Appropriations

- Fiscal Year 2024 Appropriations process is underway
- Congress has made historic investments in SBHCs over the past several years
- In FY23, SBHCs within the Section 330 Health Centers Program received \$50 million
- SBHA is advocating for \$200 million for SBHCs in FY24 - \$100 million for SBHCs within the Section 330 Health Centers Program, and \$100 million for all other non-FQHC sponsor types

54



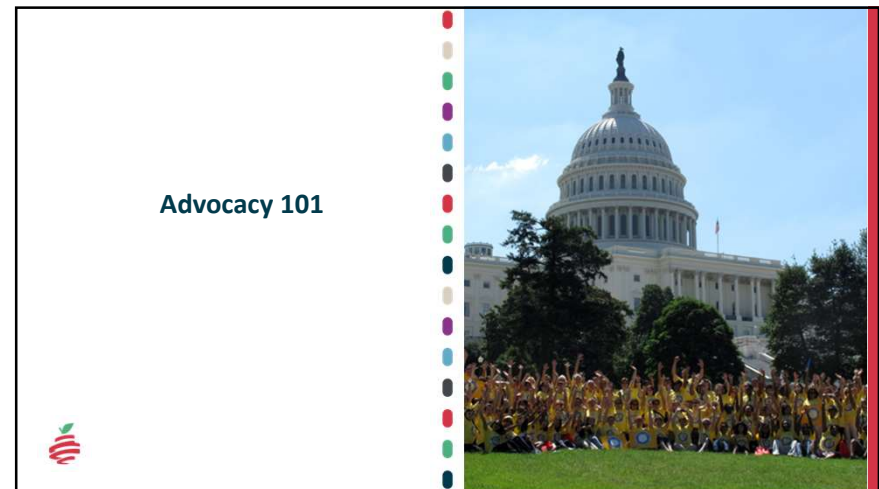
FY 2024 Appropriations Request

\$200 million for SBHCs

- \$100 million for SBHC within the Section 330 Health Centers Program
- \$100 million for SBHCs that do not receive Section 330 Health Centers funding.



55



Advocacy 101

56

Why do we Advocate?

- Policymakers can't support what they don't know about
- Strong relationships are the foundation for future support
- We are our Members of Congress' constituents and it is part of their job to listen



© School-Based Health Alliance 2022

57

Tips for Successful Meetings

- Understand that the meeting time may change up until the day of. Remember to be flexible.

Do Your Research!

- Who is your representative or Senator? Committees, interests, priorities, previous careers...
- Have they visited an SBHC? Any previous support for SBHCs?
- Which SBHCs are in their district?



© School-Based Health Alliance 2022

58

Tips for Successful Meetings

What to Discuss?

- You are there to educate and tell the story of SBHCs in your community
 - **Stories PLUS data** make a memorable impact
- Assume limited knowledge of staff
 - Do a brief SBHC 101 before diving in
- What is the impact of the SBHC to the community?
 - Focus on a few areas – mental health, oral health, primary care...
- Make the federal policy connection and **THE ASK!**
 - Appropriations, youth mental health, workforce, Medicaid
 - **"The Ask"** - \$200 million for SBHCs in Fiscal Year 2024 Appropriations



59

SCHOOL-BASED HEALTH ALLIANCE
The National Voice for School-Based Health Care

2024 National School-Based Health Care Conference

JULY 1-3 2024

Renaissance Downtown Hotel, 999 Ninth Street, NW, Washington DC

60