

Implementing a framework to achieve school-based health equity

Leo Lopez III, MD, MHS; @LeoLopez3MD
Valerie Maldonado, MSN, RN;
National School-Based Health Care Conference
June 30th-July 2nd 2024



**University
Health**

Thinking beyond

CME and CE Information

In support of improving patient care, this activity has been planned and implemented by School-Based Health Alliance and Moses/Weitzman Health System, Inc. and its Weitzman Institute and is jointly accredited by the Accreditation Council for Continuing Medical Education (ACCME), the Accreditation Council for Pharmacy Education (ACPE), and the American Nurses Credentialing Center (ANCC), to provide continuing education for the healthcare team.



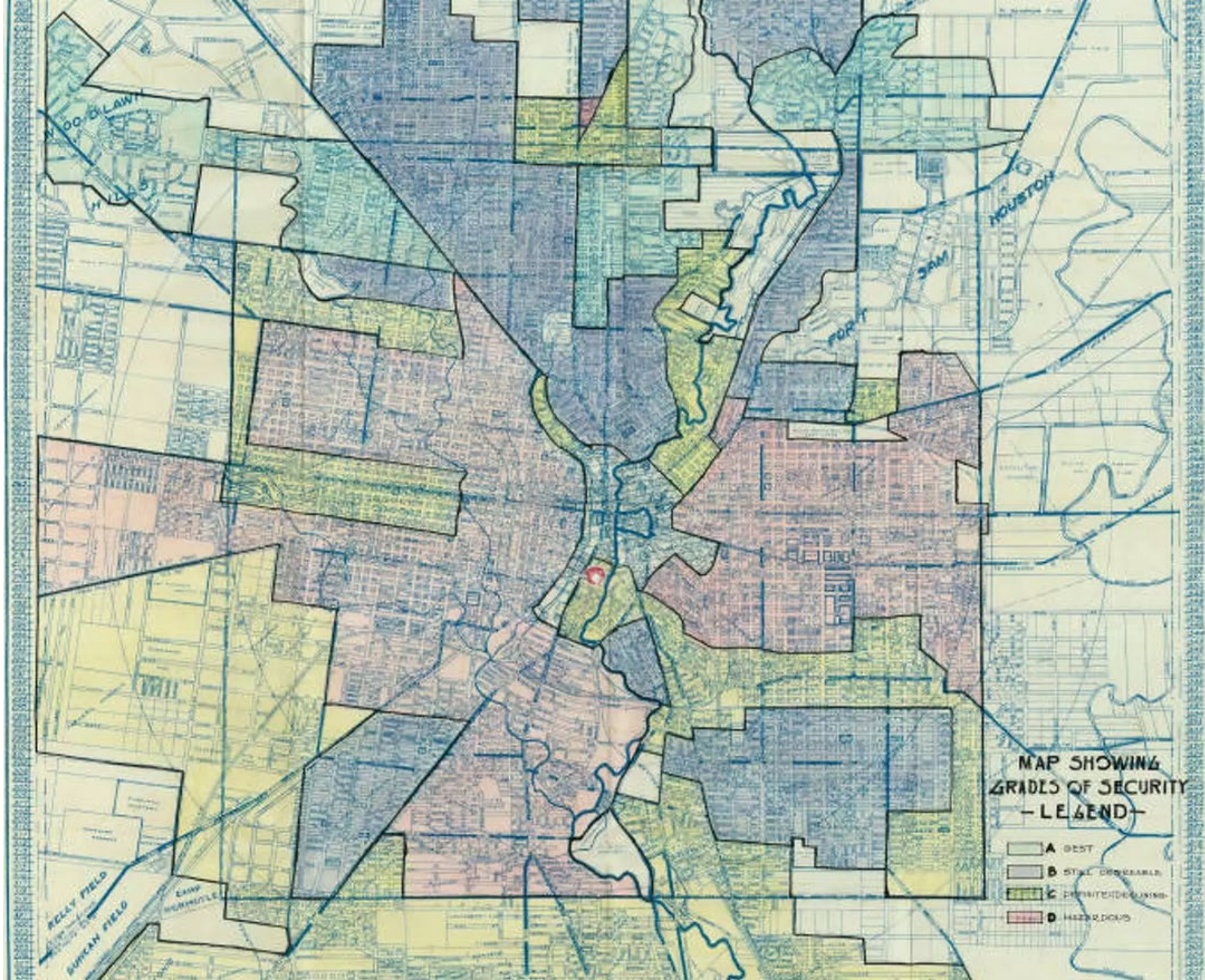
JOINTLY ACCREDITED PROVIDER™
INTERPROFESSIONAL CONTINUING EDUCATION

Through Joint Accreditation, credits are also available under the following bodies:

- American Academy of PAs (AAPA)
- American Dental Association's Continuing Education Recognition Program (ADA CERP)
- American Psychological Association (APA)
- Association of Social Work Boards (ASWB)
- Commission on Dietetic Registration (CDR)

Financial Disclosures

- With respect to the following presentation, there have been no relevant (direct or indirect) financial relationship between the presenters/activity planners and any ineligible company in the past 24 months which would be considered a relevant financial relationship.
- The views expressed in this presentation are those of the presenters and may not reflect official policy of Moses/Weitzman Health System, Inc. or its Weitzman Institute.
- We are obligated to disclose any products which are off-label, unlabeled, experimental, and/or under investigation (not FDA approved) and any limitations on the information that are presented, such as data that are preliminary or that represent ongoing research, interim analyses, and/or unsupported opinion.



“There are many economic drawbacks in San Antonio’s large Mexican population; As a class, they are non-productive, socially inferior, and in times of stress, a burden upon the community”

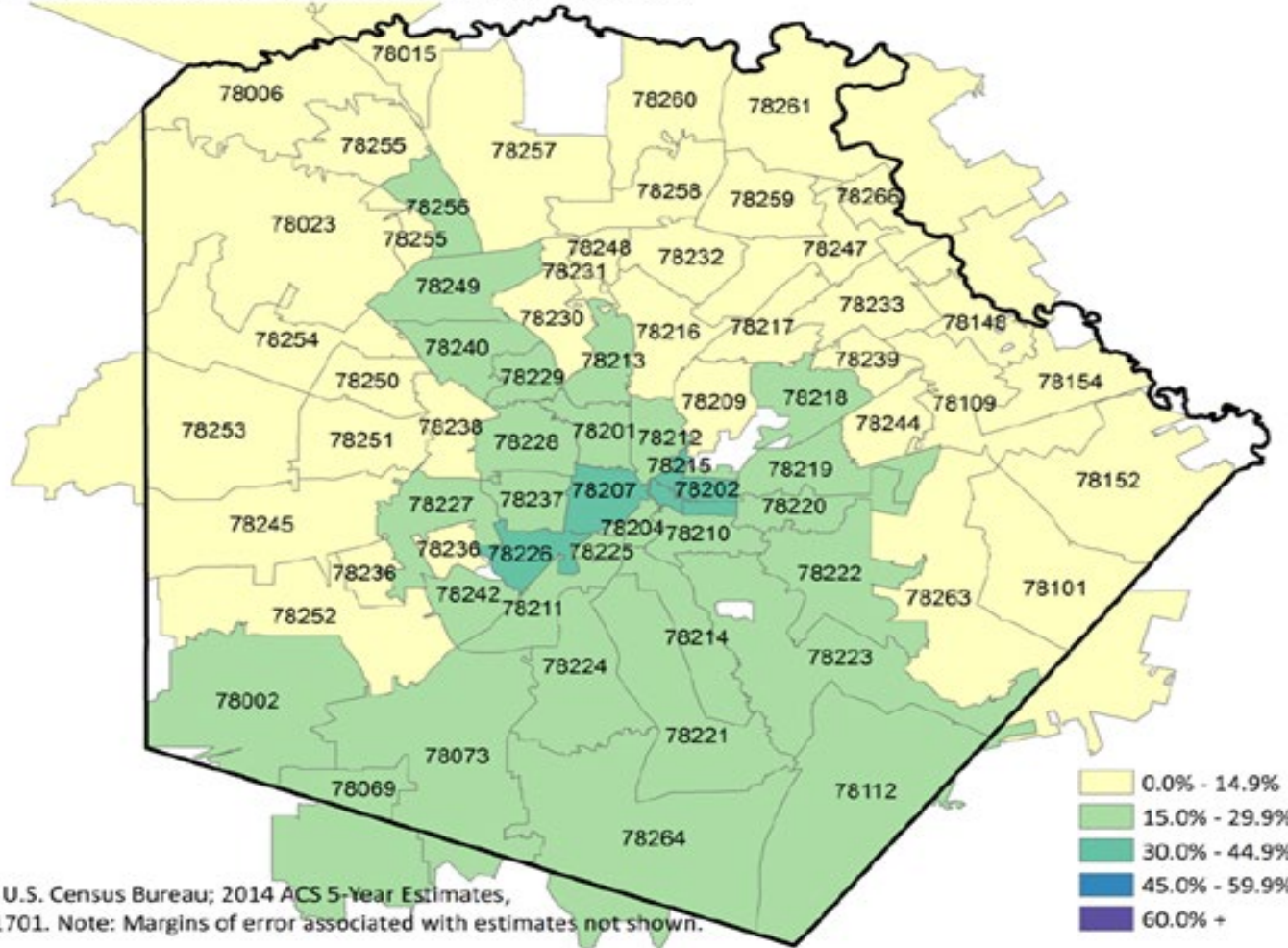
-Redlining-era outlook report excerpt, San Antonio, Texas

“No lot, site, or dwelling, with the exception of bona fide domestic servant’s quarters shall be used or occupied by any person, or persons, other than members of the Caucasian or White Race”

-San Antonio, Texas Property Deed,
October 1948

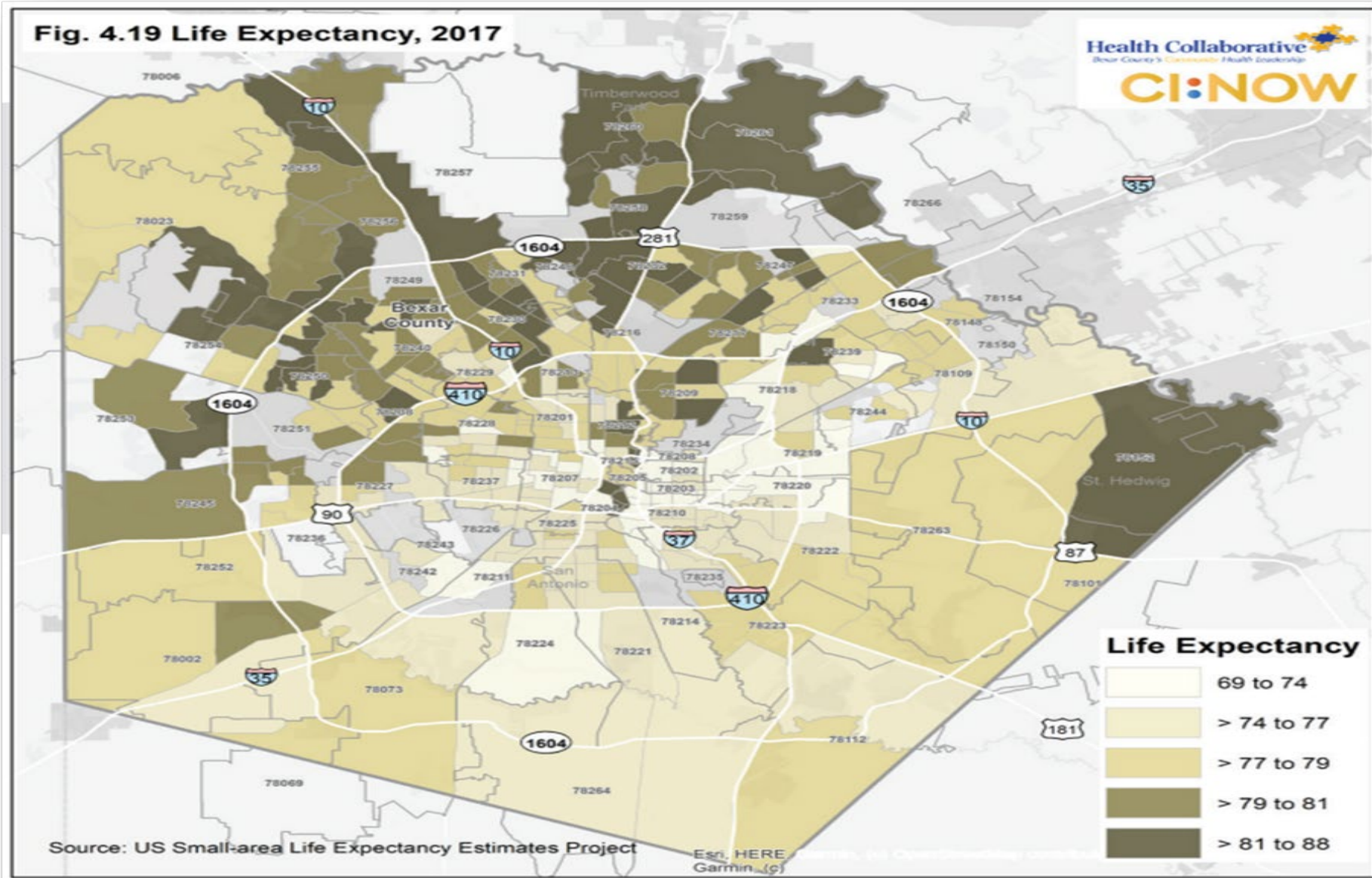
Adults 18-64 Living In Poverty by Zip Code

Figure 2.15 Percent adults 18-64 below 100% poverty level



Source: U.S. Census Bureau; 2014 ACS 5-Year Estimates, Table S1701. Note: Margins of error associated with estimates not shown.

Fig. 4.19 Life Expectancy, 2017



Health equity –
“Attaining the highest level of health for all
people”

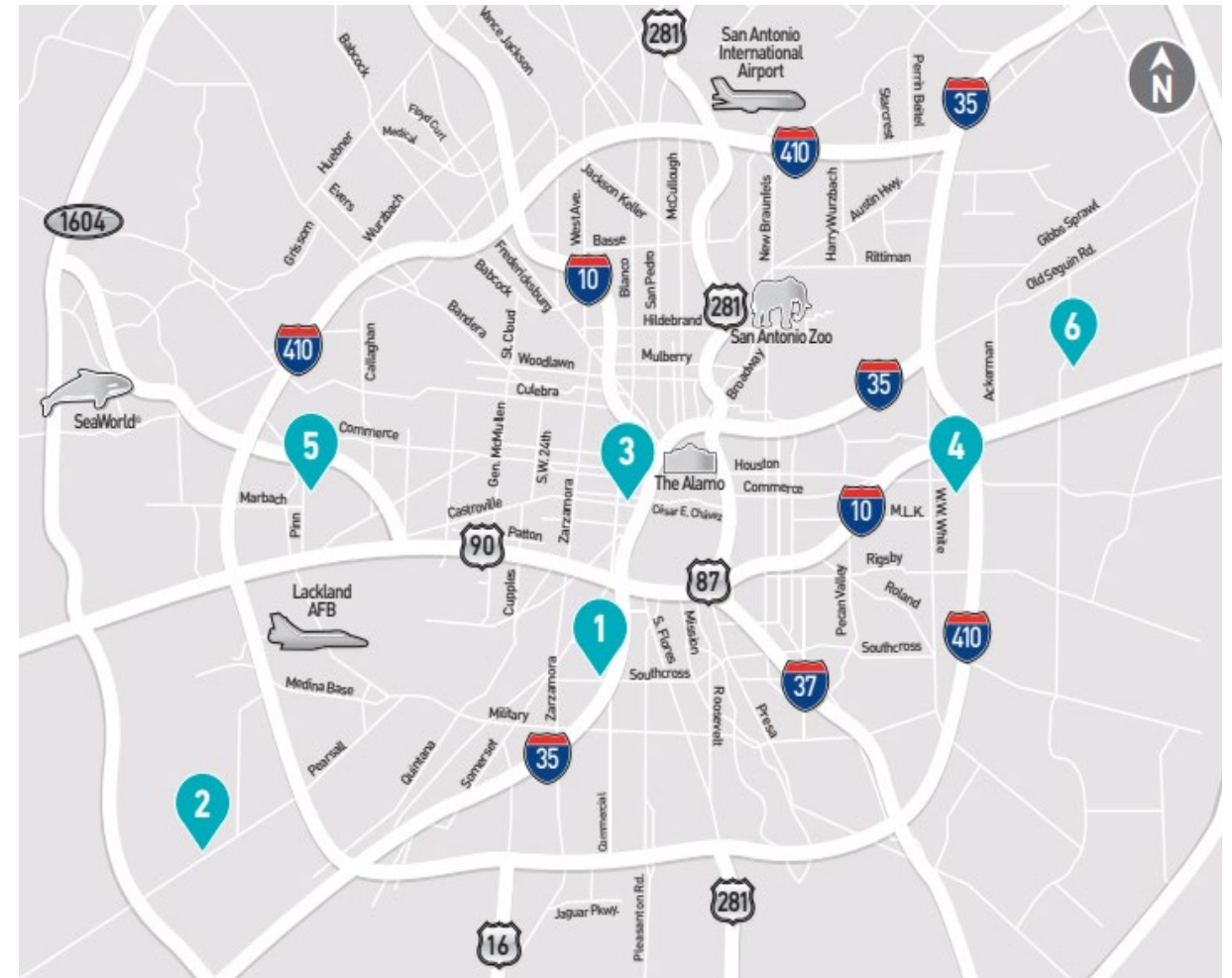
Objectives

Attendees will -

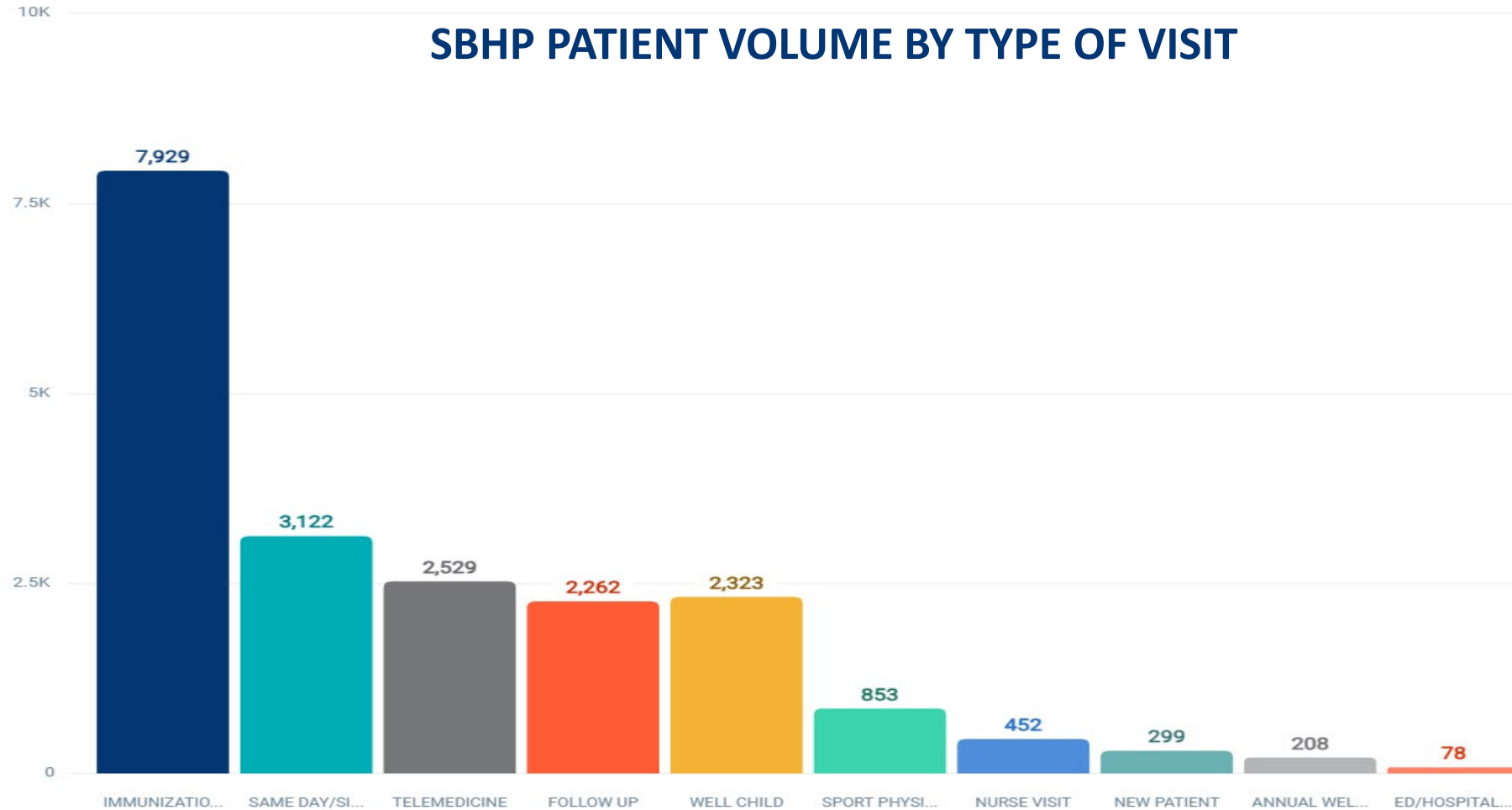
- Discuss health equity measurement
- Compare their current health equity measurement practice to the presented framework
- Formulate potential applications of the health equity measurement framework to serve their population

School-based Health Program Background

- 2013-1st clinic
- 5 clinics, 4 School Districts
- In 2023, >20,000 pts seen
- SVI 0.9997
- Primary Care/Medical Home
- Innovation
 - Public Health Corps
 - TytoCare
 - Community Education
- Staff:
 - Clinician
 - LVN/MA
 - Registration Access Specialist



School-Based Health Program Background



School-Based Health Program Background

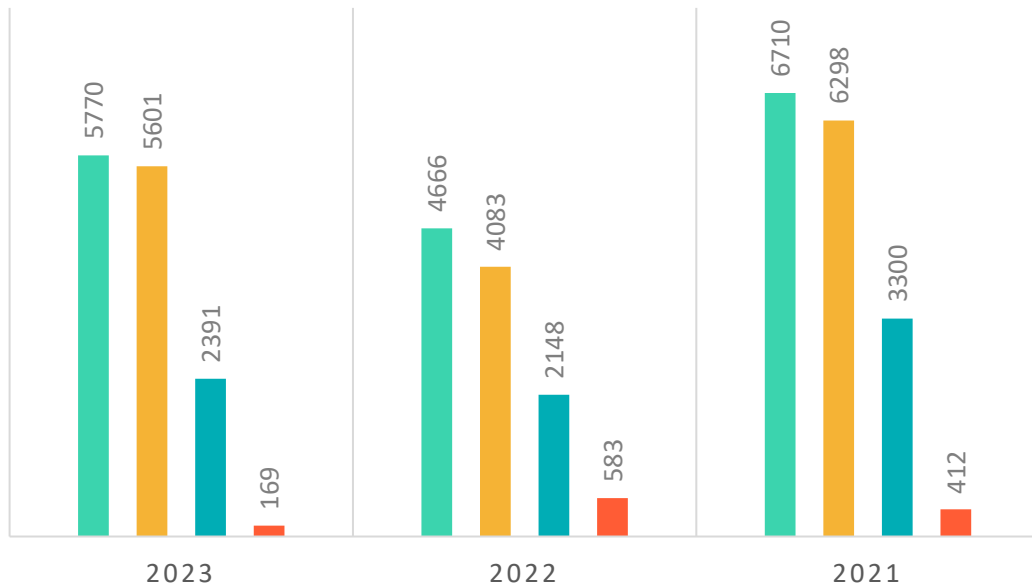
- 2015-Primary Care Mobile-Established
- Primary Care
- Vaccinations
- Pathway to the School-based Health Program
- Staff
 - MD/NP/PA (Clinician)
 - LVN/MA
 - Registration Access Specialist
 - Community Outreach Specialist
 - Community Outreach Manager
 - Nurse Supervisor



School-Based Health Program Background

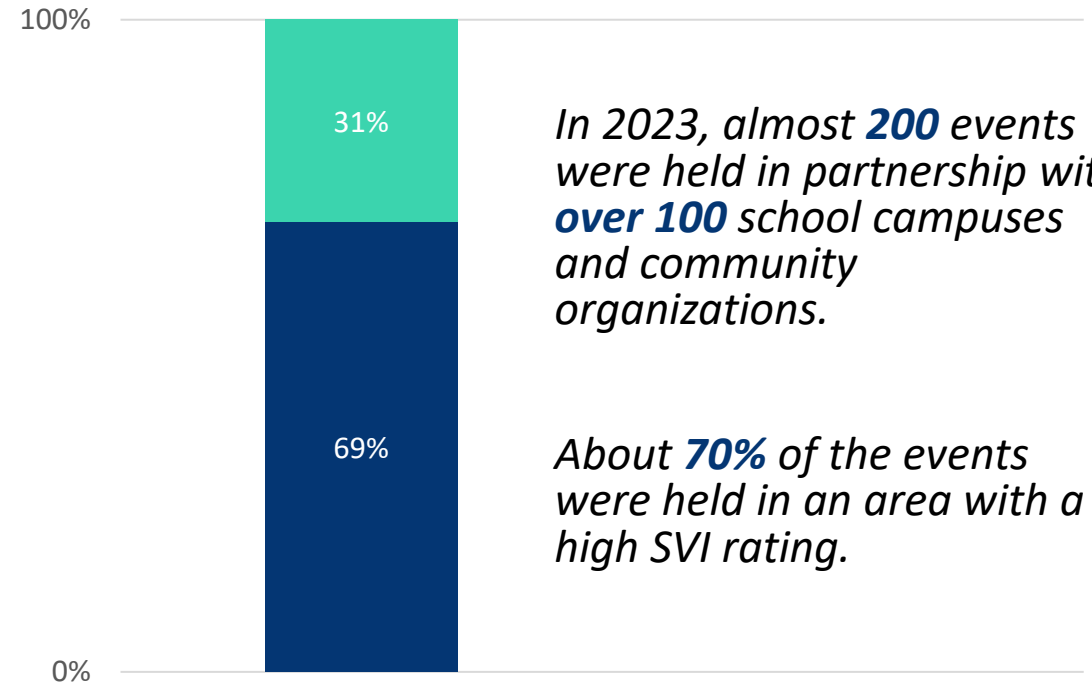
PATIENT VOLUME

■ Total Patients ■ Total Vaccinations ■ Flu Vaccines Only ■ Provider Visits



MOBILE EVENTS

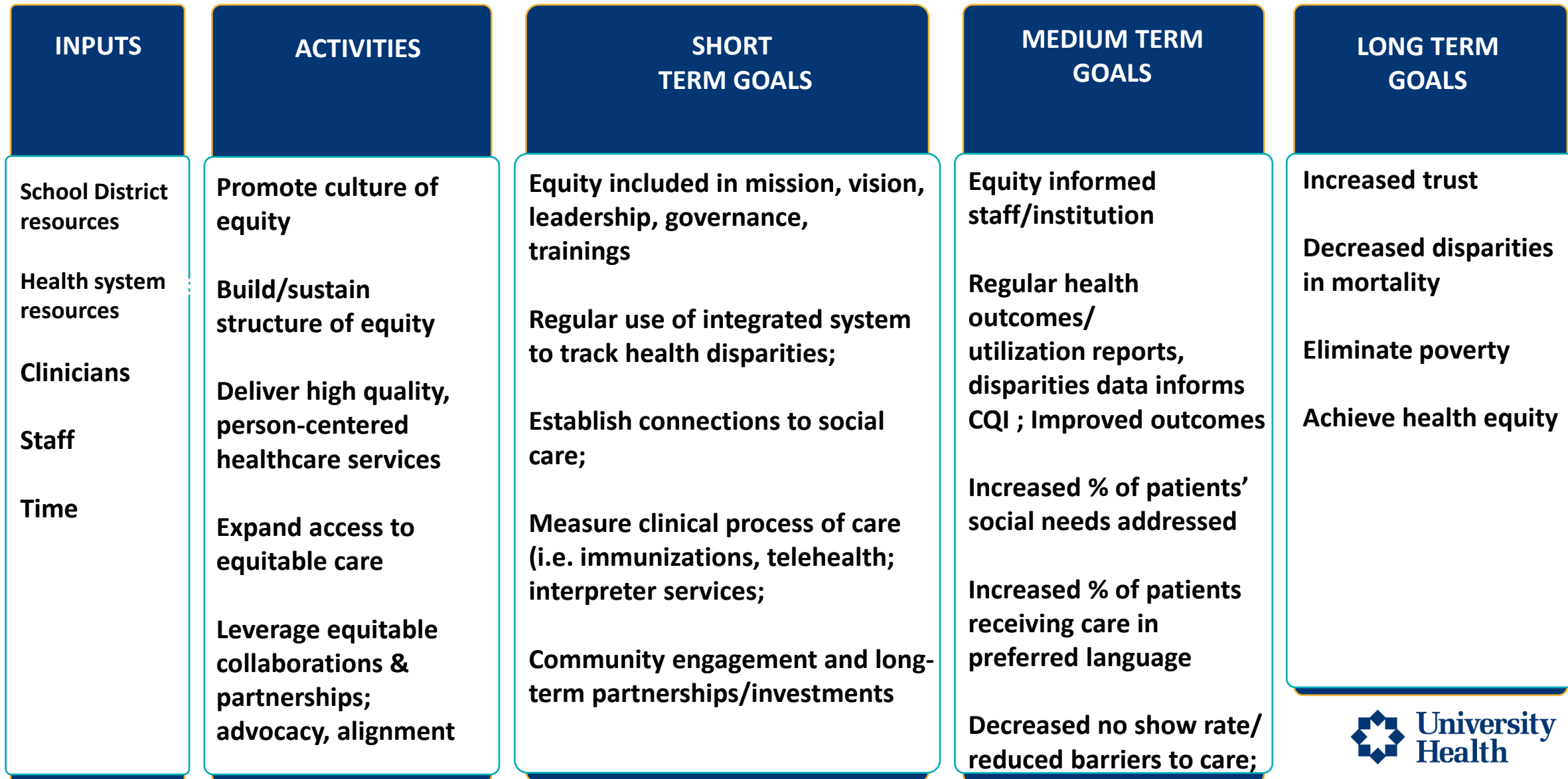
■ Schools ■ Community



*In 2023, almost **200** events were held in partnership with **over 100** school campuses and community organizations.*

*About **70%** of the events were held in an area with a high SVI rating.*

Example Logic Model



Health Equity Measurement Framework

	CULTURE OF EQUITY	STRUCTURE FOR EQUITY	QUALITY OF HEALTHCARE	EQUITABLE ACCESS	COLLABORATIONS AND PARTNERSHIPS
Subdomains	Equity is a high priority	Population health management; CHNA	CQI by social risks, SVI; Interventions to reduce disparities	Availability; Accessibility; Convenience	Collaboration across health-community sectors
Examples	Equity included in Mission, vision, leadership, governance, trainings	Integrated system to track health disparities; Addressing SDOH; Connections to social care;	Patient outcomes, clinical process of care measures (i.e. immunizations, telehealth	Interpreter services; Distance from residence/public transportation; Geographic, “after hours”/ weekends	Community engagement and long-term partnerships and investments

Structure and High Quality Care

- Structure
 - Use of integrated system to track health disparities
 - Capacity to addressing SDOH
 - Connect to social care;
- High quality care
 - Continuous quality improvement
 - Stratify clinical process of care measures, patient outcomes by REAL, zip code, SVI

Intimate Partner Violence



Within the last year, have you been afraid of your partner or ex-partner?

Within the last year, have you been humiliated or emotionally abused in other ways by your partner or ex-partner?

Within the last year, have you been kicked, hit, slapped, or otherwise physically hurt by your partner or ex-partner?

Within the last year, have you been raped or forced to have any kind of sexual activity by your partner or ex-partner?

Stress



Do you feel stress - tense, restless, nervous, or anxious, or unable to sleep at night because your mind is troubled all the time - these days?

Adolescent Socialization




How often do you get together with friends or relatives?

Do you belong to any clubs or organizations such as church groups, unions, fraternal or athletic groups, or school groups?

How often do you attend meetings for the clubs or organizations you belong to?

Use this tool to find community resources like food, housing and mental health services close to home.

ZIP

 Search



**University
Health**

Thinking beyond

If you or someone you know is in crisis, call or text 988 to reach the [Suicide and Crisis Lifeline](#), chat with them online via their website, or text HOME to 741741 (multiple languages available). If this is an emergency, call 911.

For information on University Health's medical assistance program for eligible Bexar County residents, visit UniversityHealthSystem.com/Carelink

ZIP or keyword or program name



Use this tool to find community resources like food, housing and mental health services close to home.

Select Language

English



FOOD



HOUSING



GOODS



TRANSIT



HEALTH



MONEY



CARE



EDUCATION



WORK



LEGAL



2,798 programs

in the san antonio, tx 78207 area

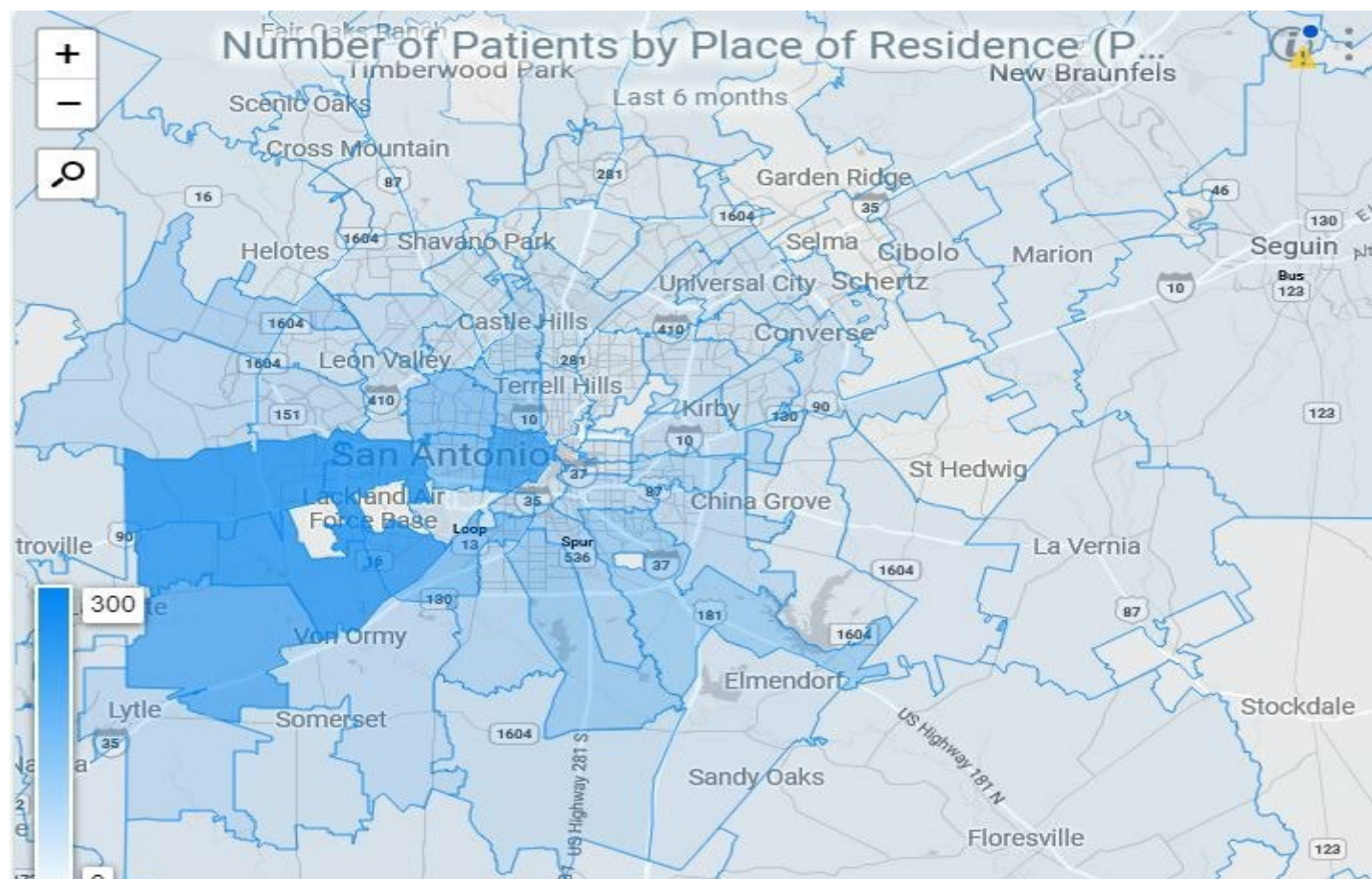
Choose from the categories above and browse local programs



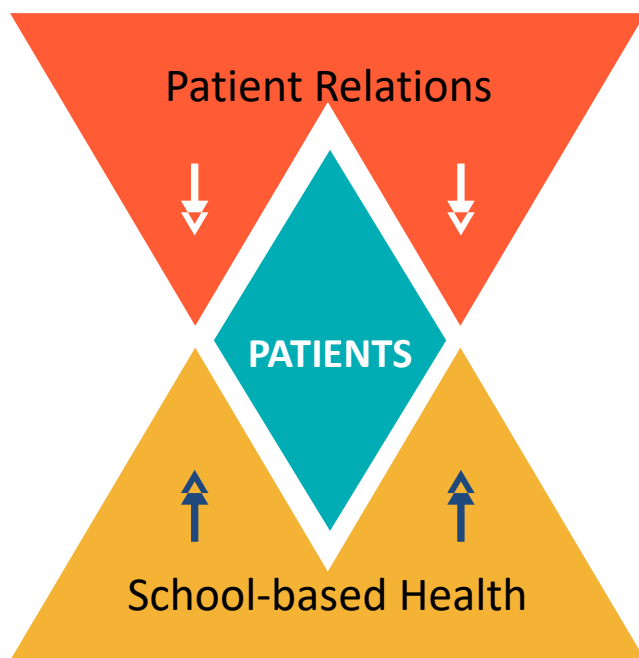
University Health

Thinking beyond

Patients by Social Vulnerability Index



Equitable Access



We measure this though capturing the percentage of patients who receive care in their preferred language.

On Demand Language Assistance Program

In-person translation services

Virtual remote interpreting

Phone translation services

Document translation services

Assign Interpreter

Appointment Interpreter Information

Patient:	Referral, Bob	MRN:	40166800	Pref Lang:	Bosnian [138]
Date:	Aug 13, 2020	Time:	4:15 PM	Length:	15
Appt Status:	Sch	Visit Type:	SAME DAY	Intr Needed:	Phone
Interp Status:	Needs Review [1]	Interp Type:			
Vendor:		Ext. Interp:			

Providers

Name	Dept	Time	Len	Needs Interp
Syed K. Ahsan, MD [18185]	RBG FAM MED [10501361]	4:15 PM	15	Yes

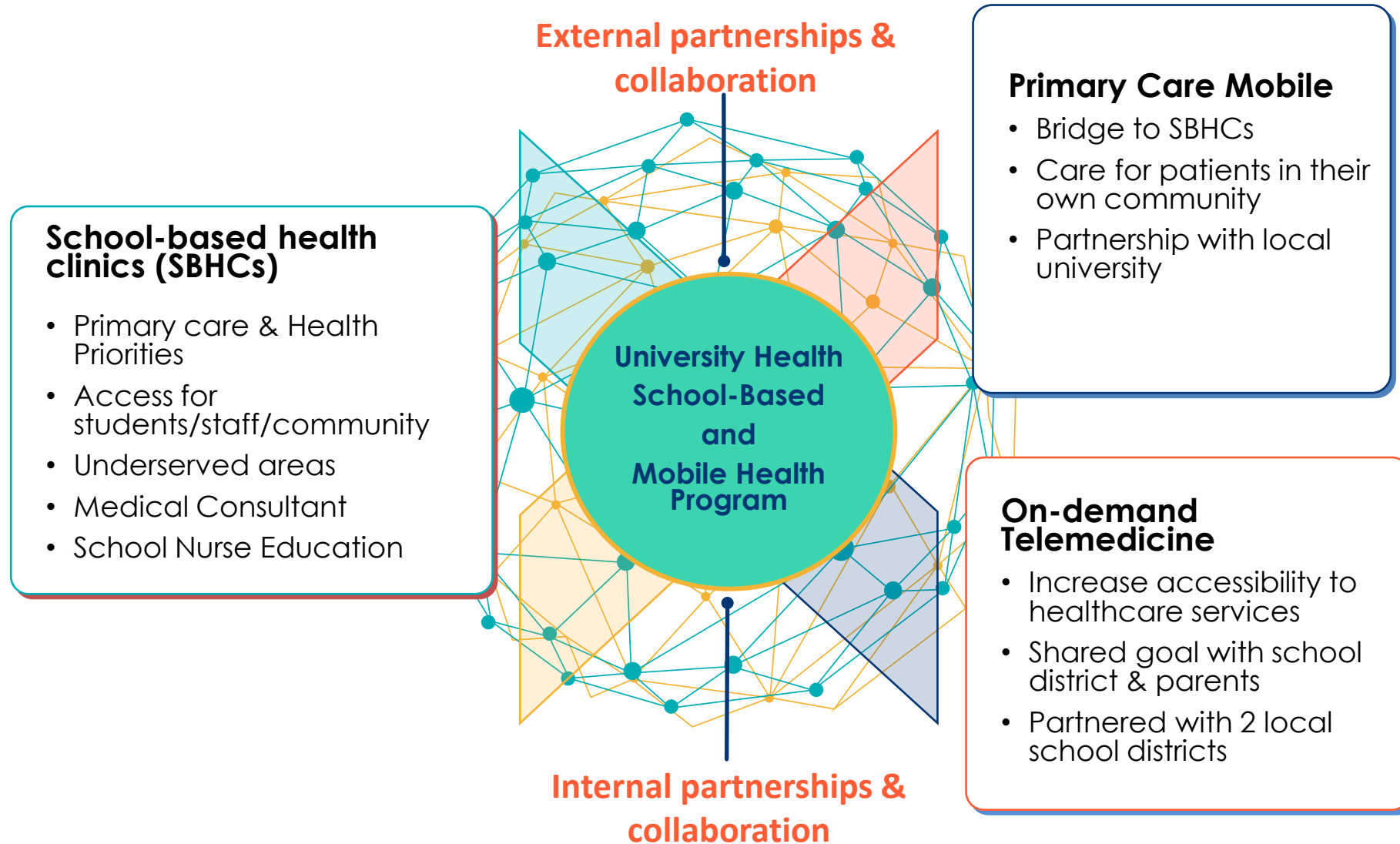
Interpreter assignment action:

Type of interpreter:

Name of interpreter:

Vendor providing interpreter:

Collaborations and partnerships



Collaboration and partnerships

COMMUNITY OUTREACH

- **Constant and consistent connection with stakeholders**
- **Build trust and establish relationships**
- **Work together to hold successful events from beginning to end**
- **Ensure we are meeting needs of community our partners serve**



REQUEST AN APPOINTMENT

For more information about healthyUexpress, call [210-358-7020](tel:210-358-7020).

Schedule a Mobile Primary Care Appointment

Schedule a Pop-up School-based Appointment

Schedule a Mobile Mammography Appointment

healthyUexpress

University Health is bringing health care to you with its fleet of healthyUexpress mobile clinics. The mobile mammography team provides digital mammograms to thousands of Bexar County women where they work, shop and study, offering a convenient alternative to traveling to an appointment. In addition, the healthyUexpress fleet brings primary care to families in their own neighborhoods. University Health makes staying healthy easier than ever with healthyUexpress.

HealthyUexpress also partners with areas schools to provide "pop-up" health services onsite for back-to-school and other special events. This is an extension of the services already offered at our school-based health centers at several schools across the community.

Breakout session

Groups use worksheet to compare their respective current health equity measurement practice to the presented framework; Formulate potential applications of the health equity measurement framework to serve their population

How does your program measure equity?

Are you measuring any subdomains under the presented framework? If so, how?

How might you apply this framework to your program?

What are 1-2 measures your program can adopt?

Group discussion

Closing

- Q&A
- Thank you!
- Leo Lopez III, MD, MHS @LeoLopez3MD (X/IG)
 - Leo.Lopez@UHTX.com
- Valerie Maldonado, MSN, RN
 - Valerie.Maldonado@UHTX.com