

## CME and CE Information

In support of improving patient care, this activity has been planned and implemented by the School-Based Health Alliance and Moses/Weitzman Health System, Inc. and its Weitzman Institute and is jointly accredited by the Accreditation Council for Continuing Medical Education (ACCME), the Accreditation Council for Pharmacy Education (ACPE), and the American Nurses Credentialing Center (ANCC), to provide continuing education for the healthcare team.



JOINTLY ACCREDITED PROVIDER™  
INTERPROFESSIONAL CONTINUING EDUCATION

Through Joint Accreditation, credits are also available under the following bodies:

- American Academy of PAs (AAPA)
- American Dental Association's Continuing Education Recognition Program (ADA CERP)
- American Psychological Association (APA)
- Association of Social Work Boards (ASWB)
- Commission on Dietetic Registration (CDR)

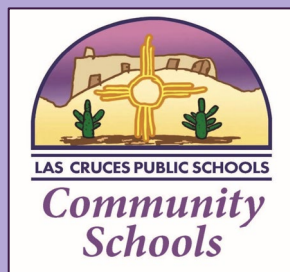


# Financial Disclosures

- With respect to the following presentation, there have been no relevant (direct or indirect) financial relationship between the presenters/activity planners and any ineligible company in the past 24 months which would be considered a relevant financial relationship.
- The views expressed in this presentation are those of the presenters and may not reflect official policy of Moses/Weitzman Health System, Inc. or its Weitzman Institute.
- We are obligated to disclose any products which are off-label, unlabeled, experimental, and/or under investigation (not FDA approved) and any limitations on the information that are presented, such as data that are preliminary or that represent ongoing research, interim analyses, and/or unsupported opinion.

# Building Relationships for Sustainable School-Based Health Centers

2024 National School-Based Health Care Conference  
July 2, 2024





**Naomi Chavez Lopez**  
*Community School Manager*  
*Las Cruces Public Schools*  
*Las Cruces, New Mexico*



**Katie Savage, MEd**  
*Health Equity & Capacity Building*  
*Consultant*  
*United Community Schools*  
*New York, New York*



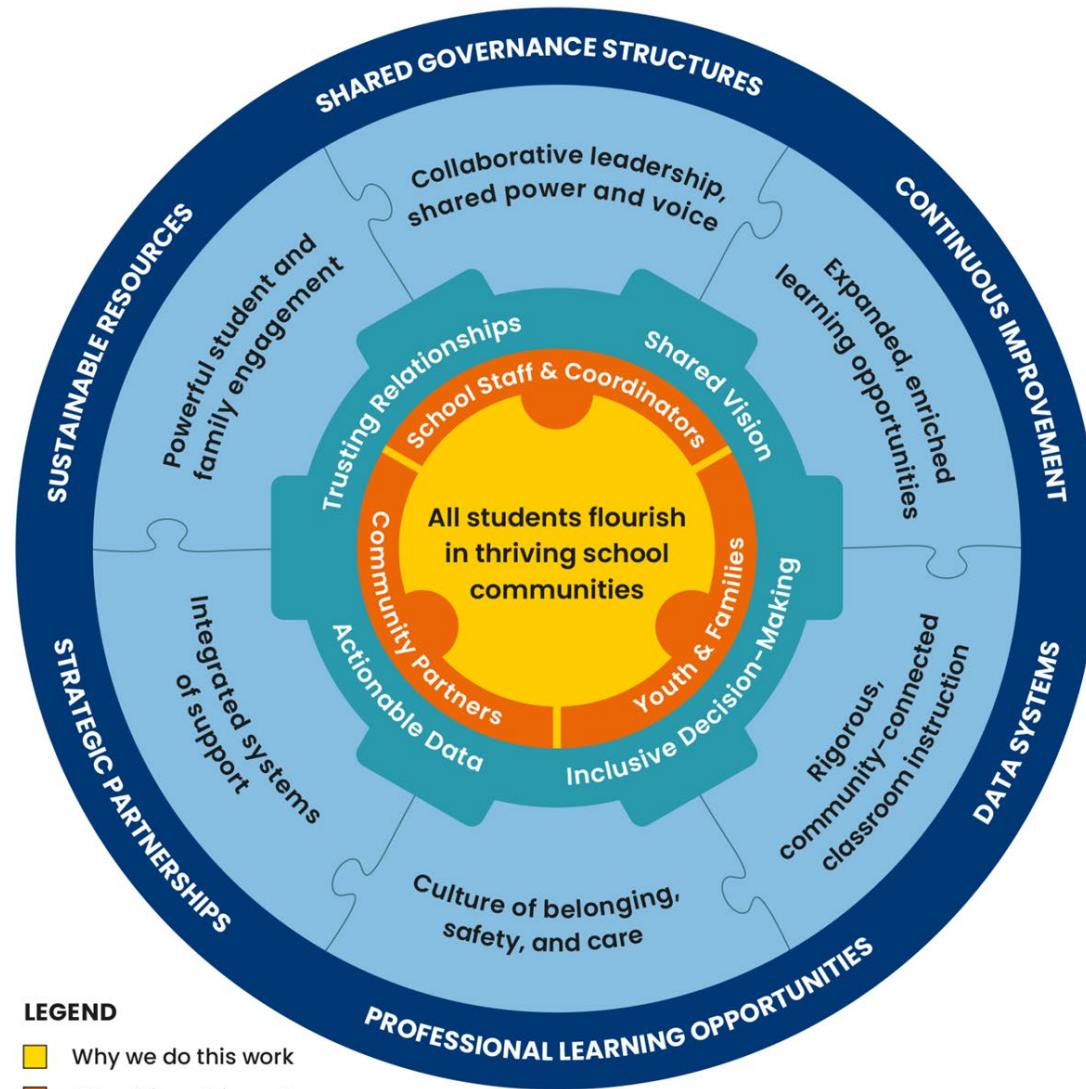
**Ernesto D. Robles**  
*Area Practice Manager*  
*La Clinica de Familia*  
*Las Cruces, New Mexico*



**Mia Martinez**  
*Capacity Building Consultant*  
*United Community Schools*  
*New York, New York*

# Warm Up Activity

# Essentials for Community School Transformation



Source: Community Schools Forward. (2023).

# New Mexico SBHC

Las Cruces, NM

2	High Schools sites	• Traditional Schools
2	Hubs	• Community Middle Schools
6	Spoke Sites	• Community Elementary Schools

# UCS SBHCs

New York City, NY

2	High School sites	• Over 18,000 mental health and wellness visits
1	Middle School	• Over 16,000 health and dental visits
7	Elementary Schools	• Over 5,000 vision screenings and exams

# Session Objectives

- Participants will understand how to utilize community school best practices to build and strengthen relationships with school districts, health center partners, and on the site level to formulate their own collaborative partnership strategic plan.





# La Clinica de Familia & Las Cruces Public Schools Partnership



LAS CRUCES PUBLIC SCHOOLS

*Community  
Schools*



**La Clinica de Familia**

*Your* Provider of Choice



## Federally Qualified Health Centers

- Receive Funding under section 330 of the Public Health Service Act
- Serve Underserved Areas. Acting as “Safety Net for the underserved”
- Offer Sliding Fee Scales
- Provide Medical, Dental, Behavioral Health and Family Services
- There is about 1500 FQHCs Nationwide

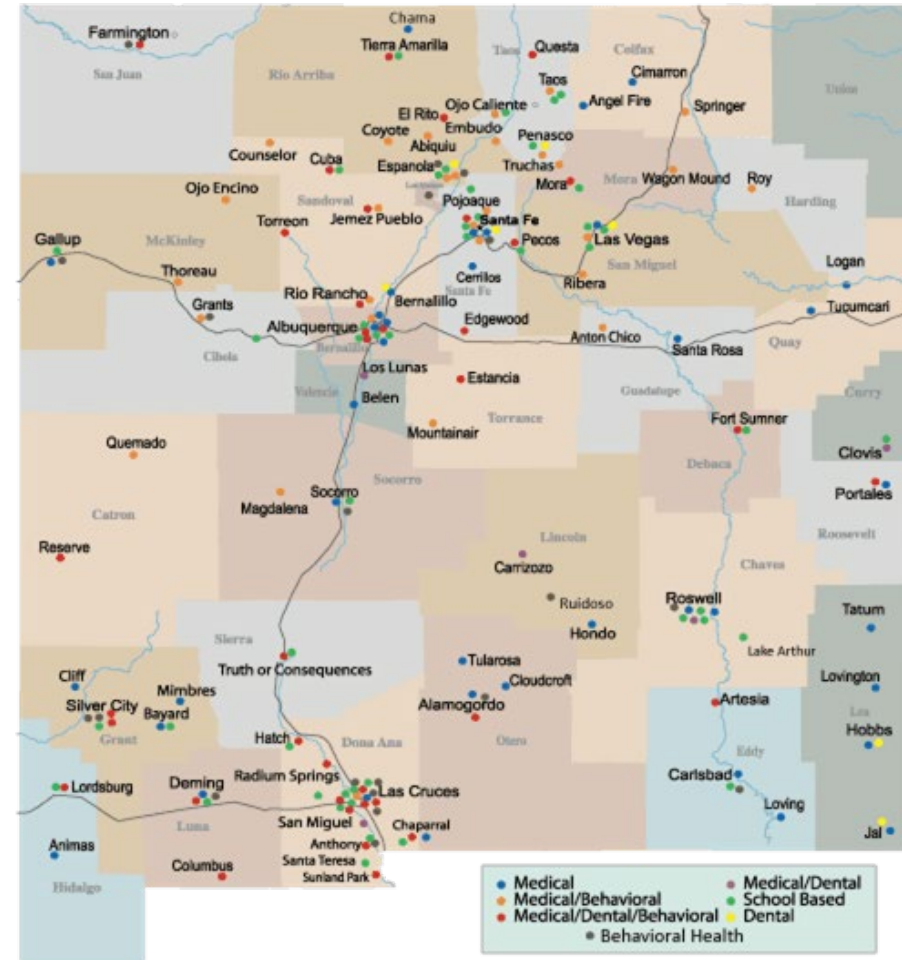
## New Mexico Primary Care Association Statistics 2021

- 20 Community Health Center Members
- About 259 Access Points
- 370,791 Unique Patients
- Medical Visits 895,064
- Dental Visits 221,564
- Behavioral Health 447,328
- Other Visits 86,484
- Total Visits 1,650,440

# New Mexico's Community Primary Health Care Sites



New Mexico  
**PRIMARY CARE**  
ASSOCIATION



Over 1.5 Million Visits Annually to over \*363,000 of New Mexico's Most Vulnerable.



This publication is supported by the Health Resources and Services Administration (HRSA) of the U.S. Department of Health and Human Services (HHS) as part of an award totaling \$1,060,809 with 0 percent financed with non-governmental sources. The contents are those of the author(s) and do not necessarily represent the official views of, nor an endorsement, by HRSA, HHS, or the U.S.

\* Patients include those served by FQHC and Rural Health Clinics.



## New Mexico School Based Health Centers

- 53 Office of School and adolescent Health-Funded SBHCs
- About 80 SBHCs in the state (non-OSAH-funded SBHCs)
- Over five years we have served:
  - 72,381 unique patients
  - 205,968 visits
- 57% of SBHC visits were categorized as Primary Care
- 43% of SBHC visits were categorized as Behavioral Health

# SBHCs at Community Schools Vs. Traditional Schools

## Community School

- Asset & Needs mapping
- Centralized coordination
- Interdepartmental cooperation and buy-in
- Faster communication
- Standardized protocols
- Community School Coordinator - point of contact for all school activities

## Traditional School

- Individual coordination with principals, nursing, counselors etc.
- Slower communication due to multiple meetings
- Protocols individualized by school preference
- Coordination with different staff for events



# Partnership: Las Cruces Public Schools and La Clinica de Familia

- Proposal from La Clinica de Familia (LCDF) to Las Cruces Public Schools (LCPS)
  - Meeting with Superintendent, Community Schools Management, LCPS Health Services and Behavioral Health Department
- LCPS Board of Education Approval
- Planning Sessions
- Barriers
  - Space in buildings
  - Misconception of SBHCs in the Community
  - HRSA - Addition of Site 5A form - 3 months
  - Hiring Staff



# Be Truthful and Set Goals

- **Goal 1:** Bring regular care for students who live in economical disadvantage communities, plus opening access to 24000 district students at LCDF SBHCs.
- **Goal 2:** Bring affordable access to care for uninsured students and their families regardless of immigration status.
- **Goal 3:** Provide easy access to care for district staff and families.
- **Goal 4:** Report child abuse and cooperate with district to keep children safe.
- **Goal 5:** Meet 60% of providers productivity before moving to other phases of the project.



# Memorandum Of Understanding

- Introduction
  - Definitions and overarching goals of establishing SBHCS
  - List of schools where FQHC is establishing SBHCs
- Responsibilities of the Parties
  - Defines FQHC as having administrative and financial oversight of SBHC
  - Defines services provided by SBHC
  - District: Identify and Refer patients to SBHC
  - District: Will cooperate in promoting SBHC activities
  - FQHC: Will follow state law and will gather parental and patient consent before treatment
- HIPAA and FERPA
  - Defines legal obligations under both ACTs.
  - HIPAA disclosures in a school setting





# Memorandum Of Understanding



## Facility and Utilities

Agreement from district of providing office space for SBHC defines who is responsible for utilities and other payable services.



## Medical Waste

Defines medical waste and disposal responsibilities



## Fixtures and Equipment

Defines ownership of fixtures and equipment



## Terms of Agreement

Defines the timeframe of the agreement



## Termination

defines termination notices and appropriate time frames.



## Liability

Defines liability coverage for both the district and the health center





**United  
Community  
Schools**

## **Building a Strong SBHC-School Partnership to Maximize Service Impact**

New York, New York

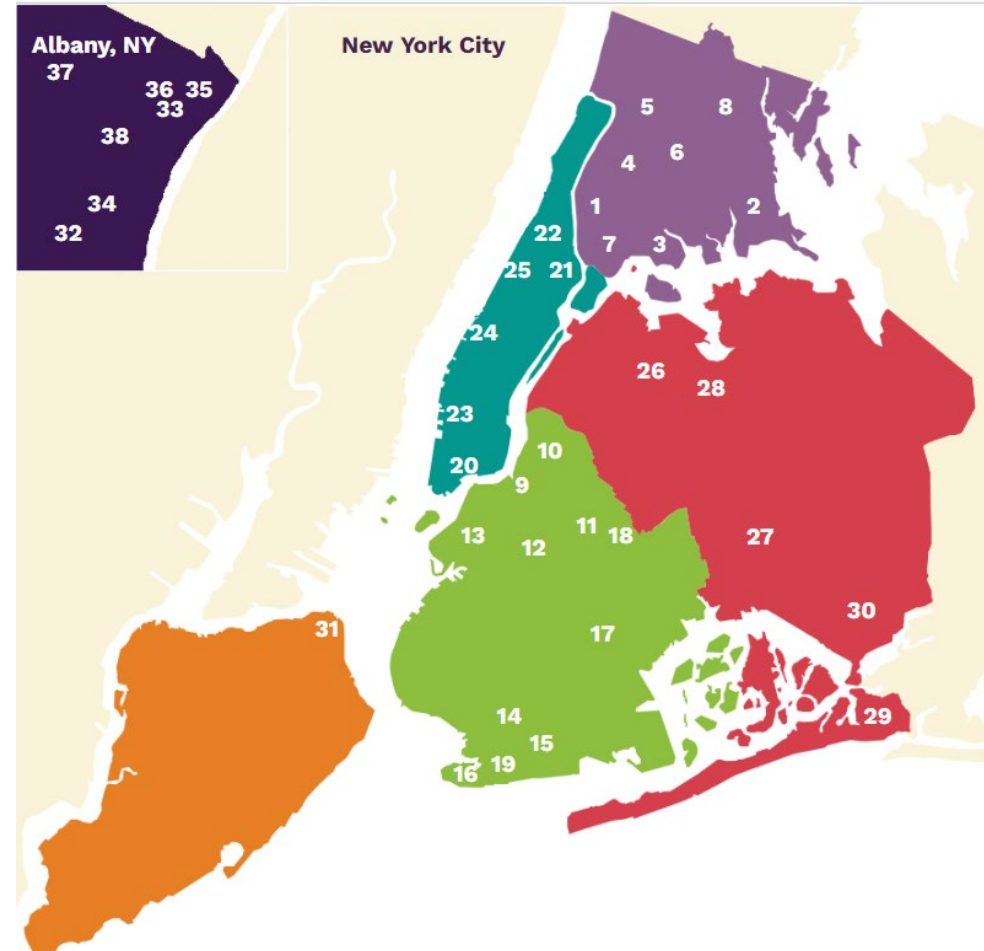
Katie Savage, MPH  
United Community Schools

Mia Martinez  
United Community Schools



# United Community Schools

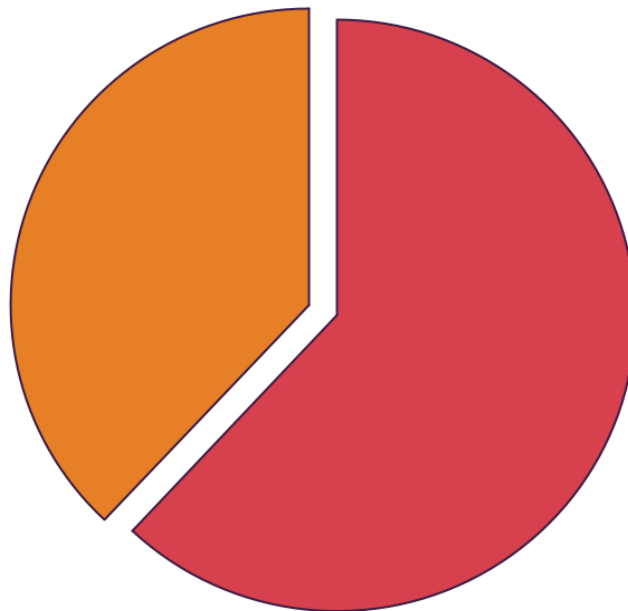
- Launched by the *United Federation of Teachers* in 2012 with support from the *New York City Council*, the *Partnership for New York City* and *Trinity Wall Street*.
- We **facilitate** partnerships between schools, non-profits, business and government to **connect vital services** to public school buildings, **improve student achievement** and **meet the** health, safety and social service **needs of students and communities**.





# Evidence of Impact

### School-Based Health Centers in New York State Fact Sheet (SBHC)

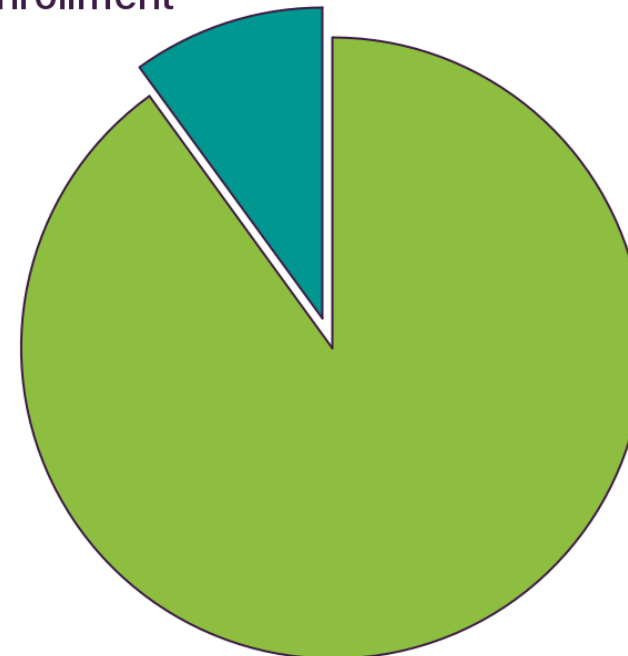


● 62% Enrolled ● 38% Not Enrolled

Number of students in NY schools with SBHCs: 253,390 students (based on 2020 - 2021 data)

<https://www.health.ny.gov/statistics/school/skfacts.htm>

### UCS School-Based Health Centers Enrollment

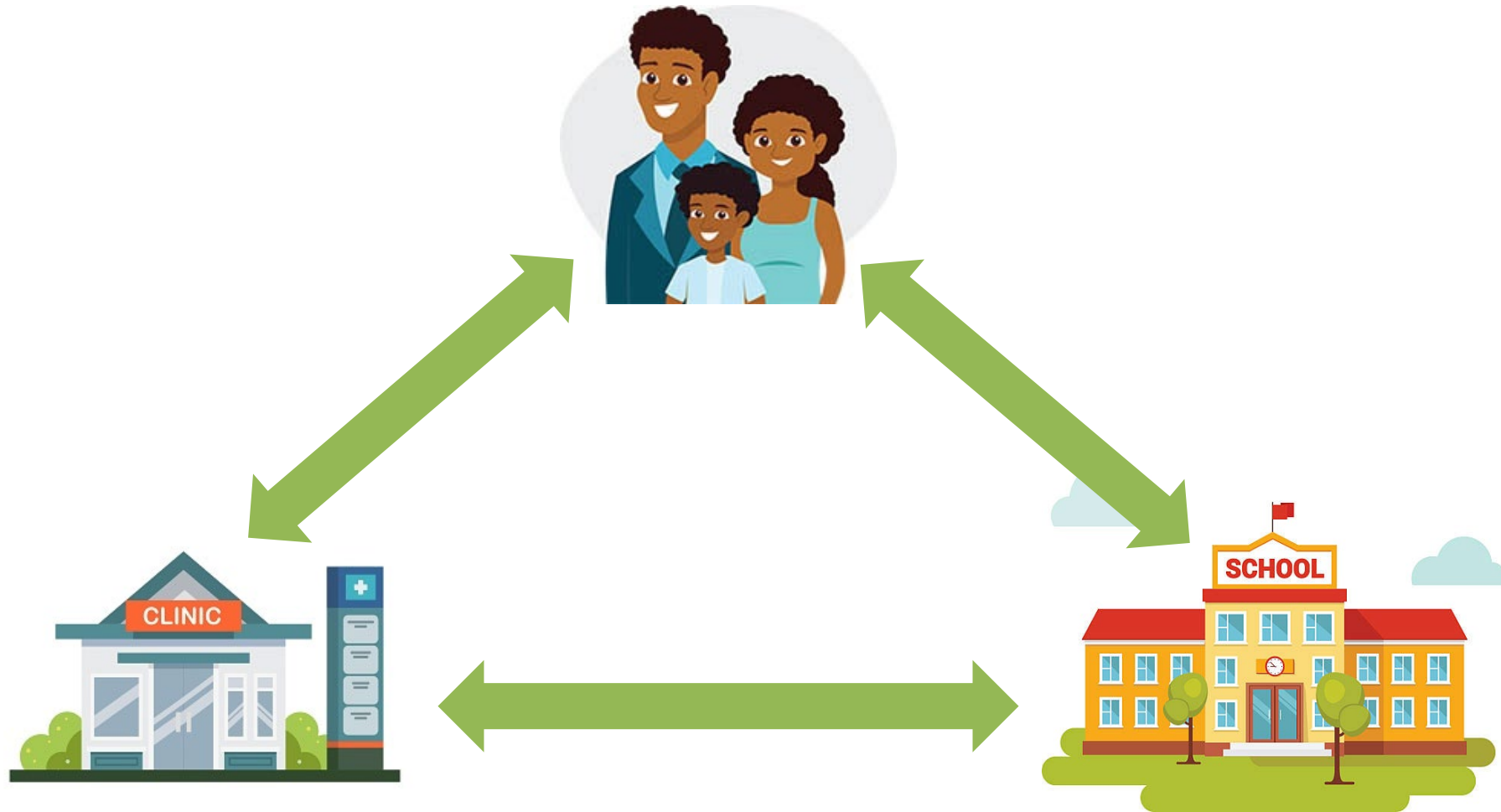


● 90% Enrolled ● 10% Not Enrolled

UCS SBHCs average 85% or higher enrollment in the first year of opening and 90% or higher in subsequent years.



# Relationship Triad- Win! Win! Win!





# Relationship Triad

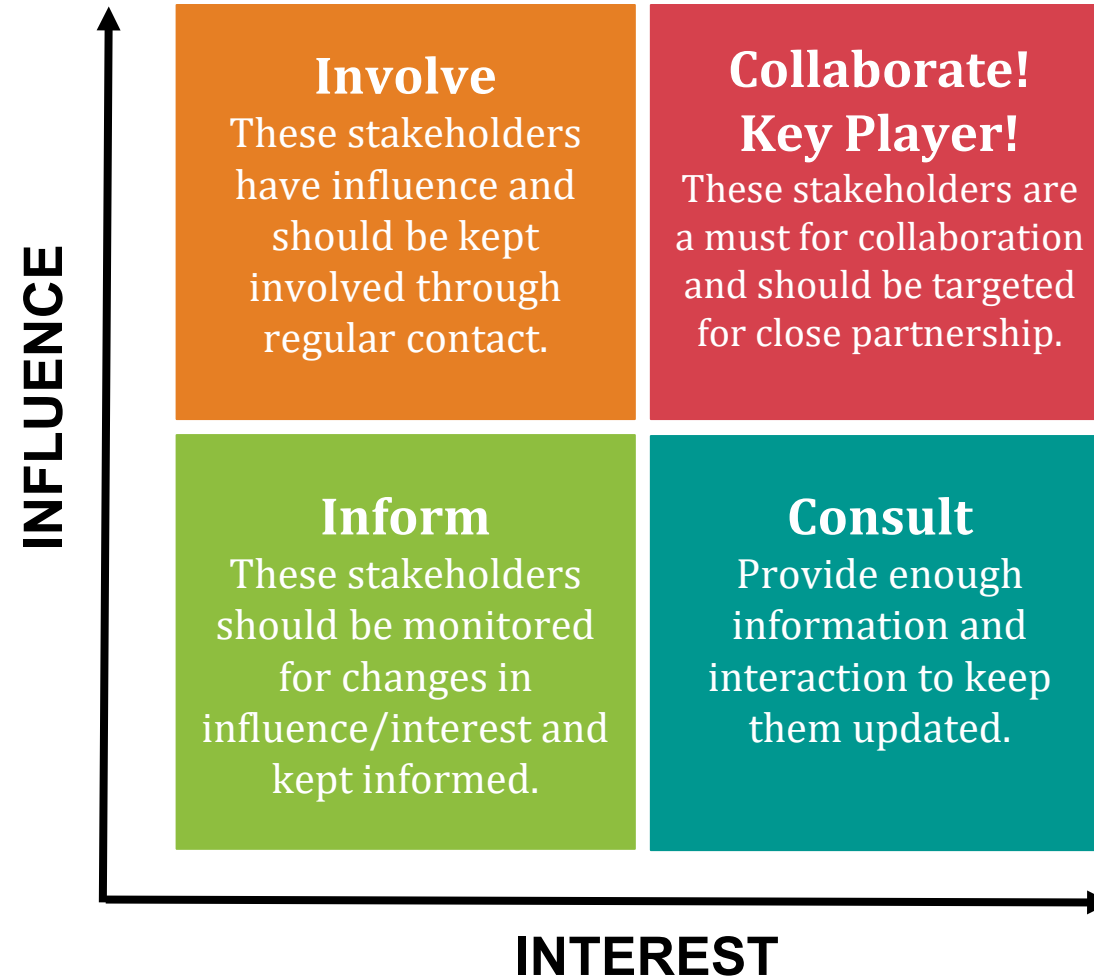
- Recognizing the importance of trust
- Building a strong relationship between school and provider to maximize connection with students
- Leveraging relationships to mitigate barriers
- Identifying key stakeholders who can help you!



**How have relationships  
supported work at your  
site?**



# Stakeholder Analysis





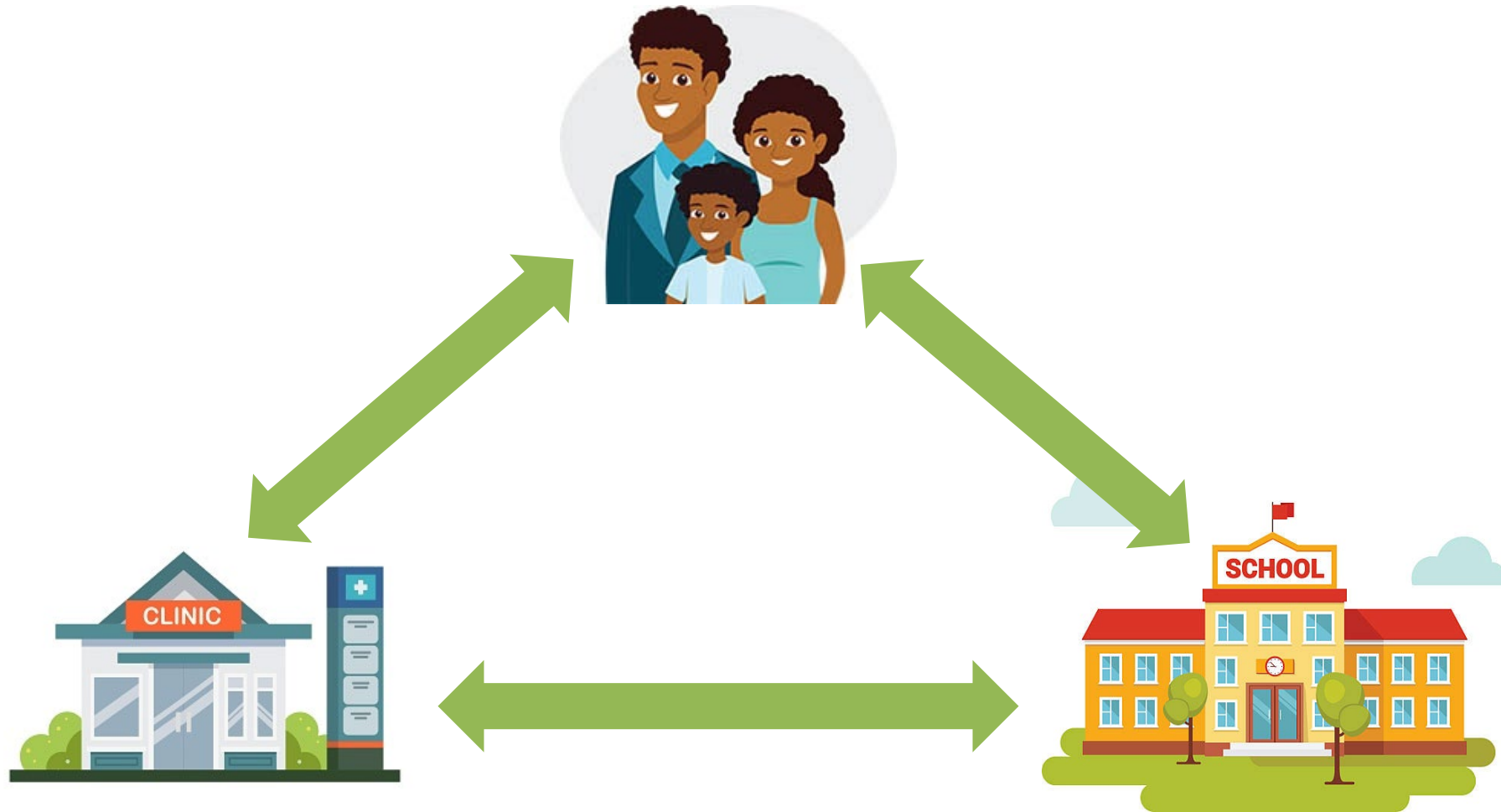


# Developing a Strategic Plan for Collaborative Partnerships

Using the Action Planning Toolkit



# Relationship Triad



# Questions?



# Thank You!

Contact us for more!



[https://laclinicadefamilia.org  
/lcdf/school-base-clinics/](https://laclinicadefamilia.org/lcdf/school-base-clinics/)



[UnitedCommunitySchools.org](https://UnitedCommunitySchools.org)