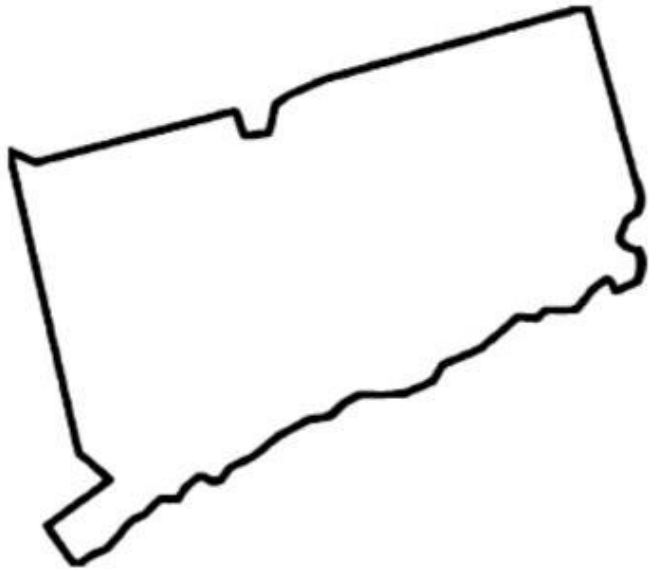


# Connecticut Request for Applications (RFA) Technical Assistance & FAQ

**Thursday, November 14, 2024**



# Session Agenda



## LEARN

- ✓ School-Based Health Alliance and our role in this RFP
- ✓ Connecticut Department of Public Health and their role

## IDENTIFY

- ✓ Grant information

## FAQ

- ✓ Review of submitted questions

## Open Floor for questions

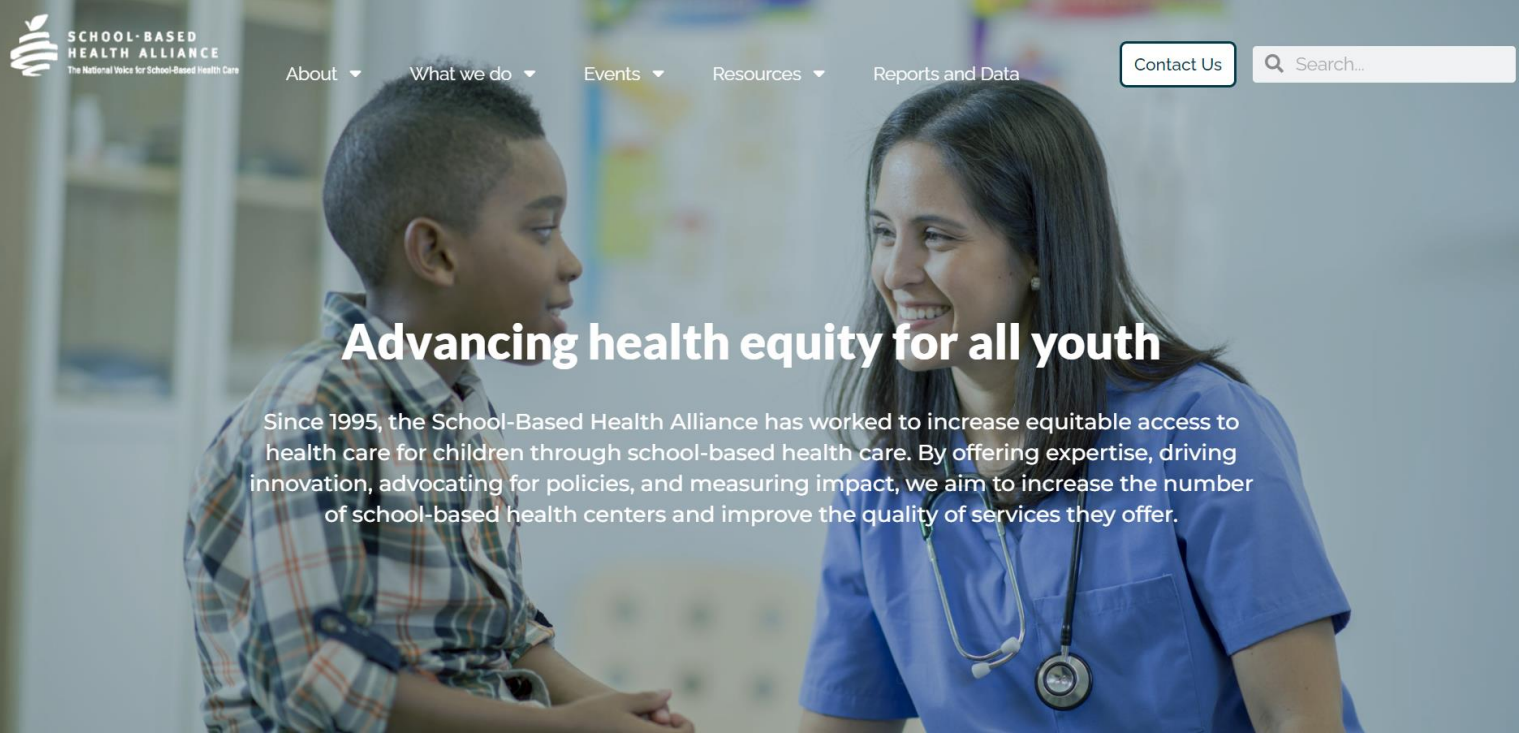
- ✓ Please raise your virtual hand or send a question in the chat box.
- ✓ Additional questions can be emailed to [CTSBHCFunding@sbh4all.org](mailto:CTSBHCFunding@sbh4all.org)

## Resources

- ✓ About school-based health care and centers



# School-Based Health Alliance



[www.sbh4all.org](http://www.sbh4all.org)

# School-Based Health Alliance

## Transforming Health Care for Students

### Our **Focus**

The School-Based Health Alliance Works to Support & Grow SBHCs

#### Policy



Establishes and advocates for national policy priorities

#### Standards



Promotes high-quality clinical practices and standards, including for telehealth

#### Data



Supports data collection and reporting, evaluation, and research

#### Training



Provides training, technical assistance, and consultation

We support the improvement of students' health via school-based health care by supporting and creating community and school partnerships [www.sbh4all.org](http://www.sbh4all.org)

## Connecticut Department of Public Health

Has contracted with the national School-Based Health Alliance to oversee disbursement and administration of funds to support School-Based Health Centers in Connecticut





# Award Information

# Goal: Support students' health, well-being and academic success by providing school-based health care

This care includes but is not limited to:



**Mental health**



**Primary Care**



**Oral health**



**Vision services**

*Through health education, mental health support, nutritional education, and outreach efforts aimed at students, families, and at-risk populations*

School-Based Health Centers offer the most comprehensive type of school-based health care. An SBHC is a collaborative effort among a school, a healthcare organization, and a community to make health services (at a minimum, primary care) available to students at school in a consistent location on a consistent schedule.

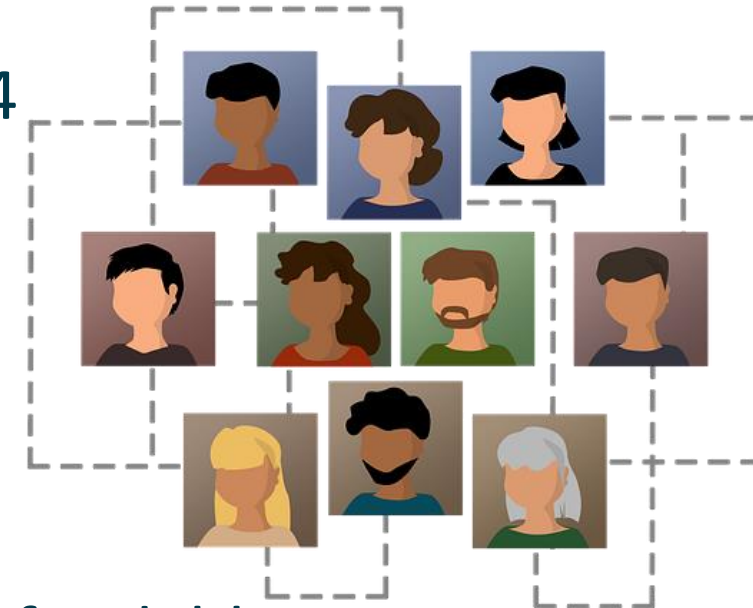
# Funding Period

**Submission of Applications Deadline:** Thursday, December 5, 2024

**Award Announcement:** Wednesday, December 18, 2024

**Contract Term:** On execution of contract - May 31, 2025

**Funding:** Currently one-time, non-renewable and non-refundable





# Award Information

**Available Funding:** \$1,191,238.54

**Minimum Award Amount:** \$25,000 per school site

**Maximum Award Amount:** \$100,000 per school site

**Projected Number of Awards:** Varied

Funds may support varied operational costs, including personnel and supplies, as well as one-time costs related to equipment purchases (including mobile units and telehealth infrastructure).



# Eligibility to Submit Applications:

**Address the target population:** the students who attend schools where the new SBHC medical and mental health services will be located.

- **Offer the following model:**

- **School-Based Health Center (SBHC)** is a health clinic that:

- is located in, or on the grounds of, a school facility of a school district or school board or an Indian tribe or tribal organization.
    - is organized through school, community, and health provider relationships.
    - is administered by a sponsoring facility.
    - provides comprehensive on-site medical and/or behavioral health services to children and adolescents in accordance with State and local law, including laws relating to licensure and certification

# Entities able to be awarded:

## Subrecipients may include any of the following:

- hospital
- public health department
- community health center
- nonprofit health or human services agency
- school or school system
- a program administered by the Indian Health Service or the Bureau of Indian Affairs or operated by an Indian tribe or a tribal organization.
- In honor and recognition of government-to-government relationships and the moral and legal responsibility to honor Indian Nations, Tribal or Indigenous communities and representative organizations are strongly encouraged to apply.



# Proposals Will Identify Projects Under the Following Focus Areas:

## Health Education

Proposed programs actively work to increase awareness and address key mental health concerns such as suicide prevention, bullying, eating disorders, and the impact of social media on mental health. *Personnel, including subject matter experts, may be contracted to support these services.*

- **Examples of Projects:**
  - **Peer Mentorship and Mental Health Workshops:** Training peer mentors to lead workshops on mental health topics, helping students recognize signs of distress, and promoting positive coping strategies.
  - **Social Media Awareness Campaign:** Initiating a campaign or workshops to educate students on the effects of social media on self-esteem and mental health, with resources on responsible online behavior.

# Proposals Will Identify Projects Under the Following Focus Areas:



## Nutritional Education and Counseling

Proposed programs actively work to provide students with essential resources, counseling, and guidance on maintaining a balanced diet and understanding nutrition's impact on overall health. *Personnel, including subject matter experts, may be contracted to support these services.*

- **Nutrition and Food Access Challenges:** Distributing \$100 gift cards for local grocery stores to SBHC-enrolled students from high-need families (limit of one card per family) to increase access to nutritious foods.
- **Healthy Cooking Classes for Families and Students:** Offering cooking classes that teach easy, affordable, and nutritious recipes, paired with a supply of ingredients to encourage families to prepare meals together.
- **Student-Led School Nutrition & Mental Health Garden:** Creating a school garden project where students grow vegetables and learn about sustainable food practices and healthy eating habits.

# Proposals Will Identify Projects Under the Following Focus Areas:

## Outreach to Families and At-Risk Clients

Proposed programs actively work to expand support to families and at-risk students, emphasizing engagement with high-need populations to increase access to SBHC resources and services.

*Personnel, including subject matter experts, may be contracted to support these services.*

- **Examples of Projects:**
  - **First Aid Kit Distribution:** Providing first aid kits to all families or as an enrollment incentive for families who register with the SBHC, ensuring they are equipped for basic health needs at home.
  - **Family Health Nights:** Hosting regular health-focused events for families to engage with healthcare providers, learn about health topics, and connect with support resources in their community.

## Grantee Requirements:

1. Monthly group virtual call (1-1.5 hours)\*
2. After submission of first reporting period, schedule grantee 1:1 meeting\*
3. Submit program reports in electronic format in accordance with contract
4. Submit invoice and year-to-date financial reports in electronic format in accordance with contract

\*at least one program and one financial staff member required to attend



# Frequently Asked Questions



# Application

- **Are only FQHCs eligible?**
  - No
- **Can one organization submit multiple proposals if we have multiple sites for which we are seeking to apply? Is there a limit to how many proposals an organization can submit?**
  - One application per program. Include all schools. Start a new application if applying for a different program
- **Are their specific geographic priority areas for this program?**
  - See the report that pinpointed areas of need in the PA 21-35 report:  
<https://portal.ct.gov/-/media/DPH/School-Based-Health-Centers/PA-2135-SBHC-Report-Updated-32922-final.pdf>

# Application Continued

- **Would an approved grant be awarded to the Board of Education or subcontractor?**
  - This grant funds SBHC sites; the organization implementing the grant will be the approved grantee. See a list of approved applicants and eligibility on the RFA.
- **Is there a work plan template for the request?**
  - No template; include the work plan in the requested attachments, no more than 2 pages.
- **Can we split a program between multiple schools? If so, would there be more than one application for this?**
  - Yes, a program may be split between multiple schools, with one proposal per program.

# Budget

- **Is there a required budget and/or budget narrative format for this request?**
  - Submit the budget in your agency's format. No required budget template. **Must submit in Excel document.**
- **What level of detail is needed in the budget (do we need names of specific item number of products etc.?)**
  - The budget should be clear and specific, with identified budget categories. See proposal for additional detail.



# Budget Continued

- **Is this state DPH or federal funding?**
  - Federal
- **Is indirect allowed? If so, is it capped?**
  - Yes, it is allowed as a part of the program costs. It is capped at 19.1% and must be in line with organizational policy and directly related to site costs
- **Are one-time costs included in the amount of funding available?**
  - Yes, include in the overall budget

# Miscellaneous

- **Can we apply for the same sites that received funding already?**
  - Yes, as long as the proposed program/project falls under one of the focus areas.
- **Will only SBHCs proposed for schools listed in the PA 21-35 report be funded? Otherwise, to what extent will these schools be prioritized?**
  - No, it is not limited to school only in the PA 21-35 report.
- **If a Title I school had an SBHC when the PA 21-35 report was prepared but has since changed the SBHC provider organization after a service lapse, will that school be a priority for this funding opportunity?**
  - See above.



# Questions & Answers





# Resources

# SBHA Direct Resource Links

## SBHC Resource Hub:

- <https://www.sbh4all.org/resources/>
- **Mapping Tool:**
  - <https://data.sbh4all.org/sbhadb/maps/>
- **Hallways to Health:**
  - <https://tools.sbh4all.org/hallways-to-health/hallways-to-health-home/>
- **The Blueprint Resources (tools, examples, guides, including MOU's)**
  - Now located under the Resource Hub
- **Health Centers and Schools: Uniting for Young People's Success:**
  - <https://conferences.nachc.org/nachc/sessions/2623/view>





# CT DPH RESOURCES



- **CT DPH- School-Based Health Centers**
  - <https://portal.ct.gov/DPH/Family-Health/School-Based-Health-Centers/School-Based-Health-Centers>
- **School-Based Health Center Expansion Working Group Final Report**
  - <https://portal.ct.gov/-/media/DPH/School-Based-Health-Centers/PA-2135-SBHC-Report-Updated-32922-final.pdf>



2025 National School-Based  
Health Care Conference

June 29 -  
July 1, 2025

Westin Washington, DC Downtown  
Hotel (formerly the Renaissance  
Downtown Hotel) in Washington, D.C



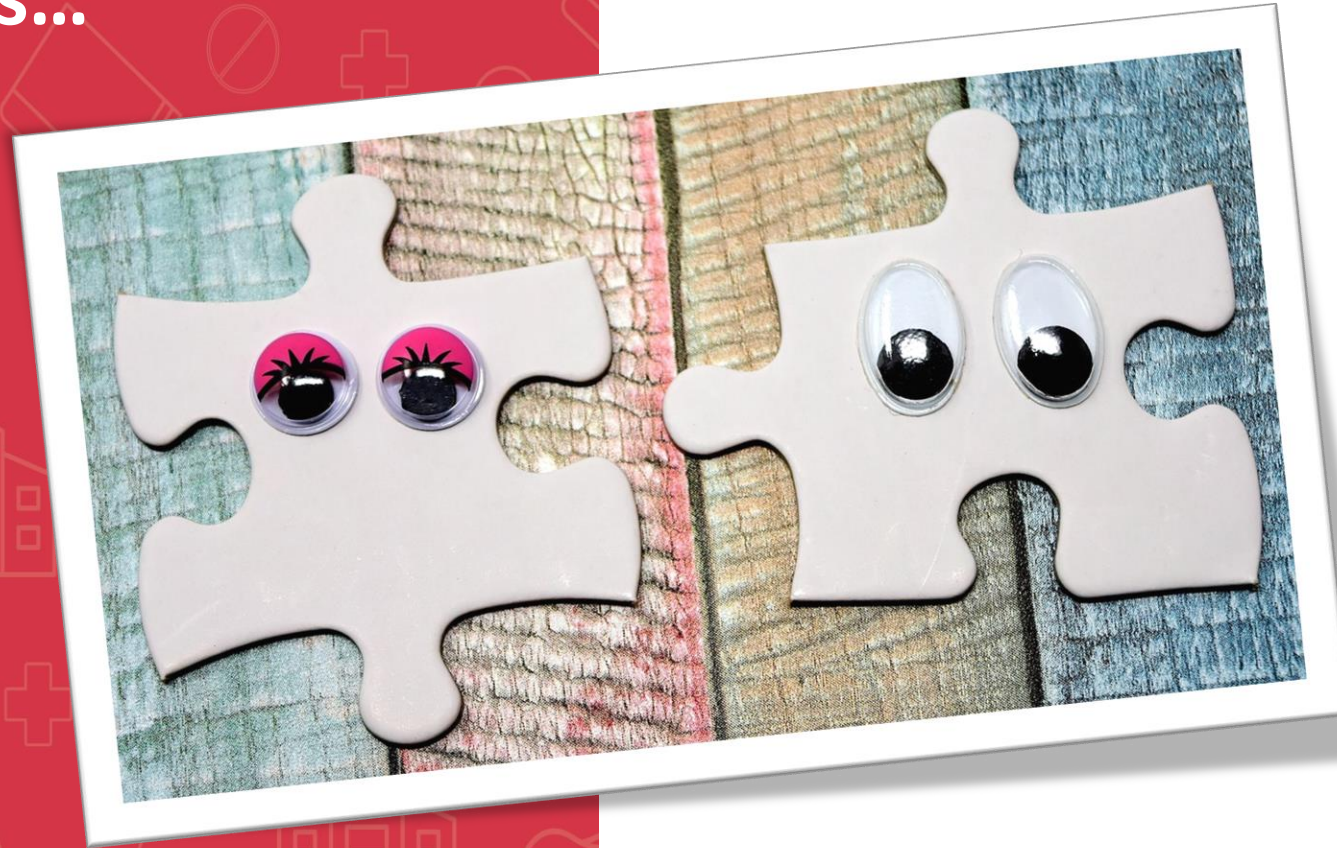
SAVE  
THE  
DATE

**Call for Abstracts is Now Open**

**Submit your session and poster abstracts for the 2025 National School-Based Health Care Conference and 'Be the Change' Youth Training Program by December 9!**



**Connect with us...**



**CT SBHA Funding Team**  
**[ctsbhcfunding@sbh4all.org](mailto:ctsbhcfunding@sbh4all.org)**

# Stay Connected!



1. Subscribe to our bi-weekly e-newsletter (Digest)  
Go to <https://bit.ly/SBHAdigest>
2. Follow us on social media



<https://www.facebook.com/SchoolBasedHealthAlliance>



<https://twitter.com/sbh4all>



<https://www.linkedin.com/company/school-based-health-alliance/>



<https://www.instagram.com/sbh4all/>



Scan this QR code to subscribe