

Influences of Health: Building Your Screening Roadmap

March 4, 2025

3pm Eastern Standard Time



School-Based Health Alliance

Transforming Health Care for Students

Our **Focus**

The School-Based Health Alliance Works to Support & Grow SBHCs

Policy



Establishes and advocates for national policy priorities

Standards



Promotes high-quality clinical practices and standards, including for telehealth

Data



Supports data collection and reporting, evaluation, and research

Training




Provides training, technical assistance, and consultation

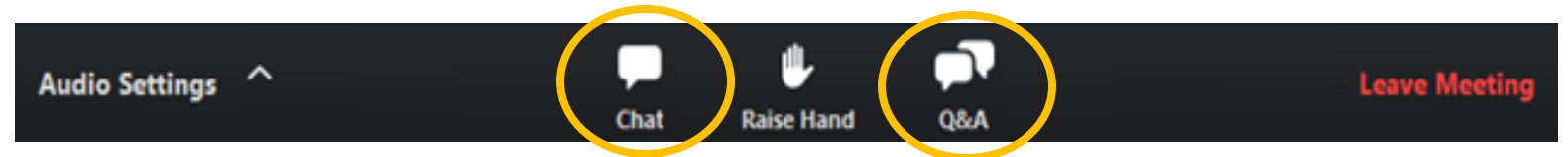
We support the improvement of students' health via school-based health care by supporting and creating community and school partnerships.

www.sbh4all.org

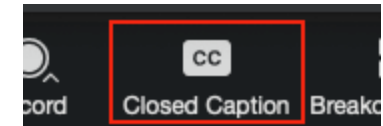
REMINDERS

 **All attendees are in listen-only mode.**

 **To ask a question during the session, use the “Chat” or “Q&A” icon that appears at the bottom of your Zoom control panel.**



 **To turn on closed captioning, click on the “CC” button.**



 **Please complete evaluation poll questions at the end of the presentation.**

 **The recording, slides, and resources will be shared via email.**

Learning objectives

Participants will be able to:

- Identify evidence-based tools to detect needs and strengths in children and adolescents.
- Strengthen school and community partnerships to address needs.
- Apply best practices in care coordination and follow-up.

Today's Speakers



Mandy LeBlanc
Contractor
School-Based
Health Alliance



Donnie Greco
Associate
School-Based
Health Alliance



Ruaa Hassaballa, MPH
Strategist
American Academy of
Family Physicians



Todd Moore, PhD, MPS
Manager
American Academy of
Family Physicians

Today's Speakers Continued

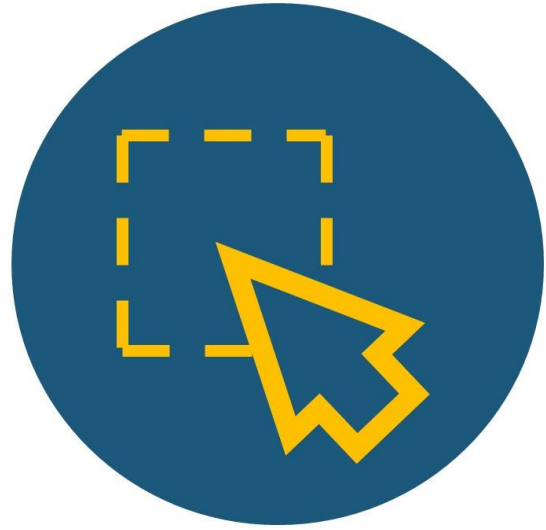


Jay Bohanon, MA
Specialist
[American Academy of Family
Physicians](#)

Participants Introductions

- Your name
- Your role
- Emoji Check-in 🤪 🕶️ 🧠 😄

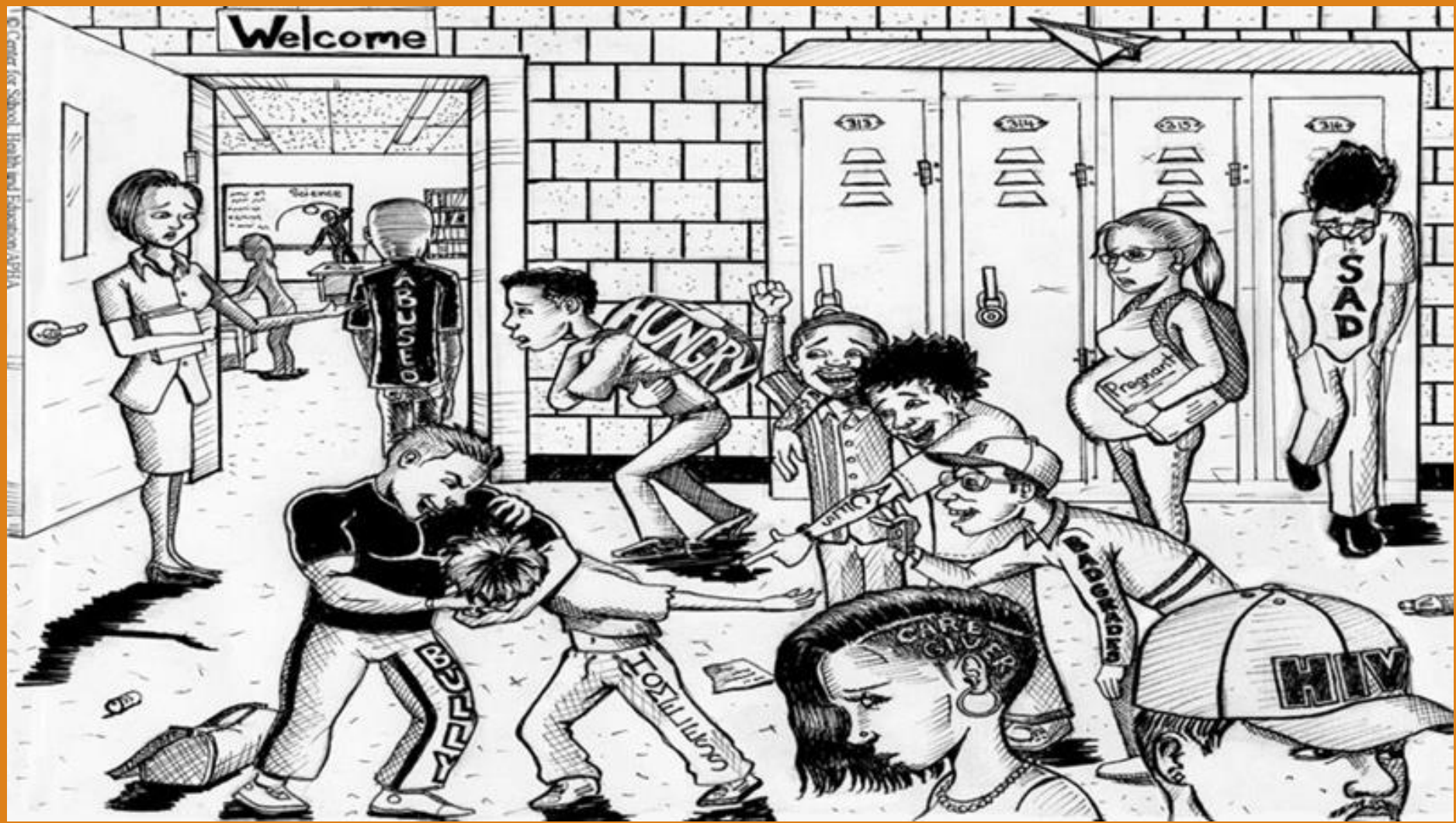




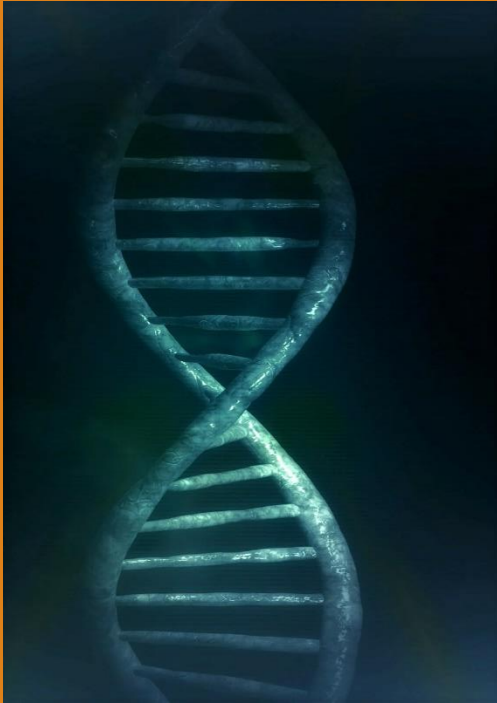
What factors influence our health?

Factors that strongly influence health outcomes include a person's:

- Access to medical care
- Access to nutritious foods
- Access to clean water and functioning utilities (e.g., electricity, sanitation, heating, and cooling)
- Early childhood social and physical environment, including childcare
- Education and health literacy
- Familial and other social support
- Housing and transportation resources
- Linguistic and other communication capabilities
- Neighborhood safety and recreational facilities
- Occupation and job security
- Other social stressors, such as exposure to violence and other adverse factors in the home environment
- Social status (degree of integration vs isolation)
- Socioeconomic status
- Spiritual/religious values



Factors that strongly influence health outcomes include a person's



Genes & Biology



Individual Behavior



Clinical Care

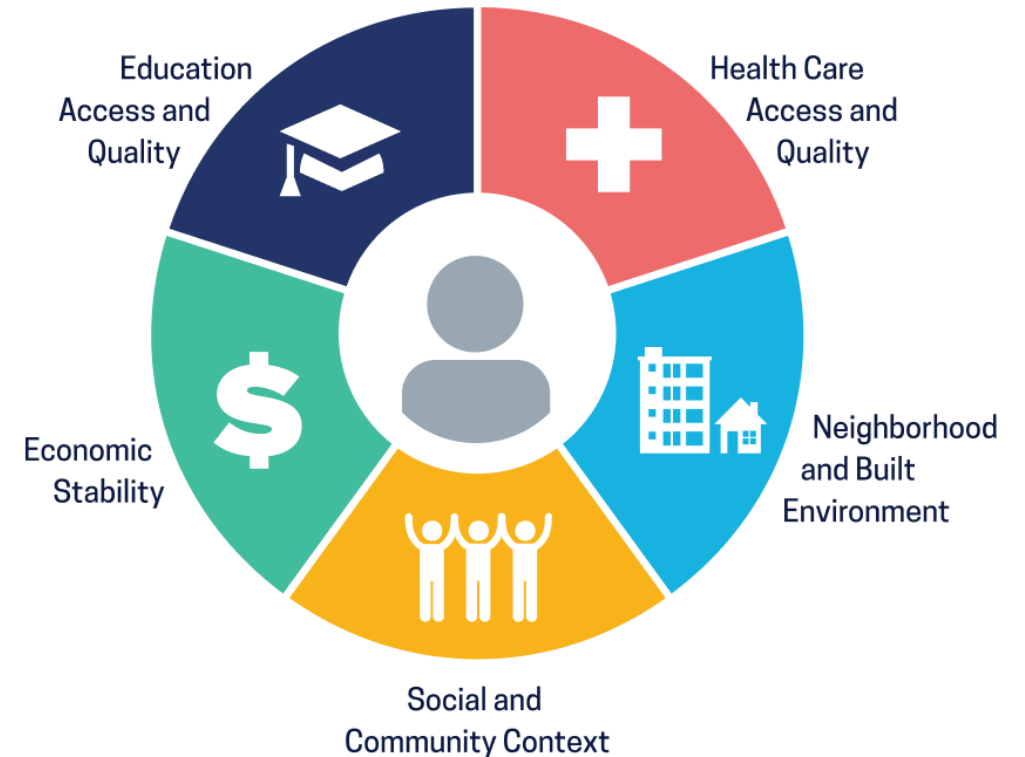


Socioeconomic &
Physical Environment

Images: [PublicDomainPictures](#) from [Pixabay](#); [Rhythm In Life](#) from [Pixabay](#) ; [Pepper Mint](#) from [Pixabay](#); [Mabel Amber](#), [Messianic Mystery Guest](#) from [Pixabay](#)

Factors That Strongly Influence Health Outcomes

- The conditions in the environments where people are born, live, learn, work, play, worship and age that affect a wide range of health, functioning, and quality-of-life outcomes and risks. *(CDC)*



<https://www.cdc.gov/socialdeterminants/index.htm>
Image: [US DHHS Healthy People 2030](#)

Education Access & Quality

- Preschool programs
- Highschool graduation
- Extracurricular activities
 - Suspension days
 - Pathway programs
 - College admissions

Economic Stability

- Poverty
- Youth-friendly jobs



Health Care Access & Quality

- Confidential STI screenings
- Youth-friendly health care services
- Contraceptive services
- Health and dental insurance

Neighborhood & Built Environment

- Walking to/from school, complete streets
- Housing
- Parks and playgrounds
- Nearby liquor stores and vape shops
- Lead exposure

Social & Community Context

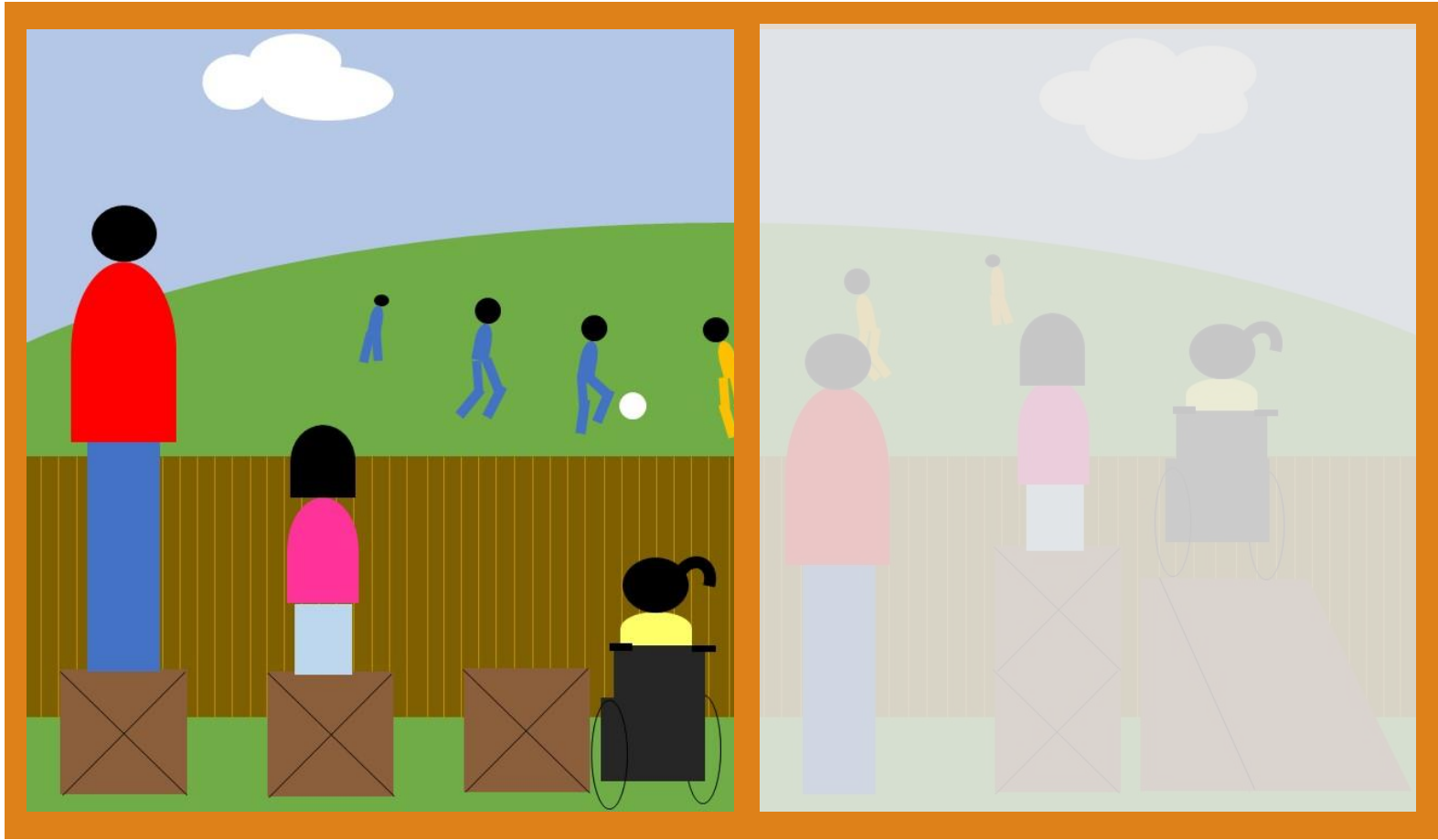
- Youth clubs
- Bullying

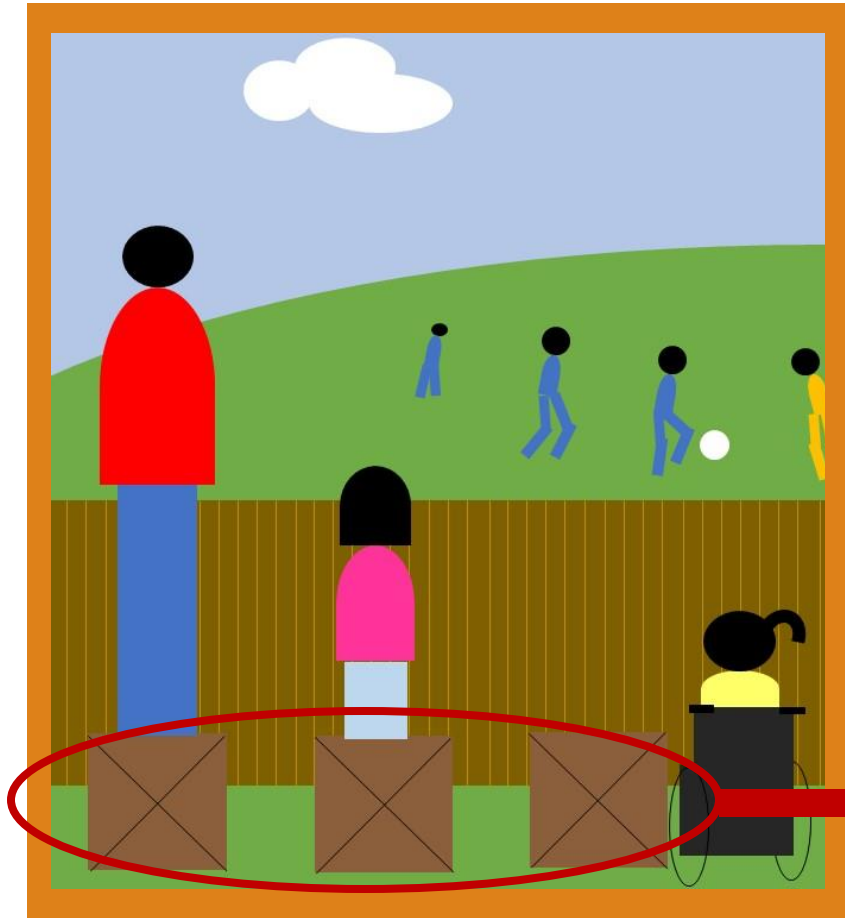
Health Outcomes



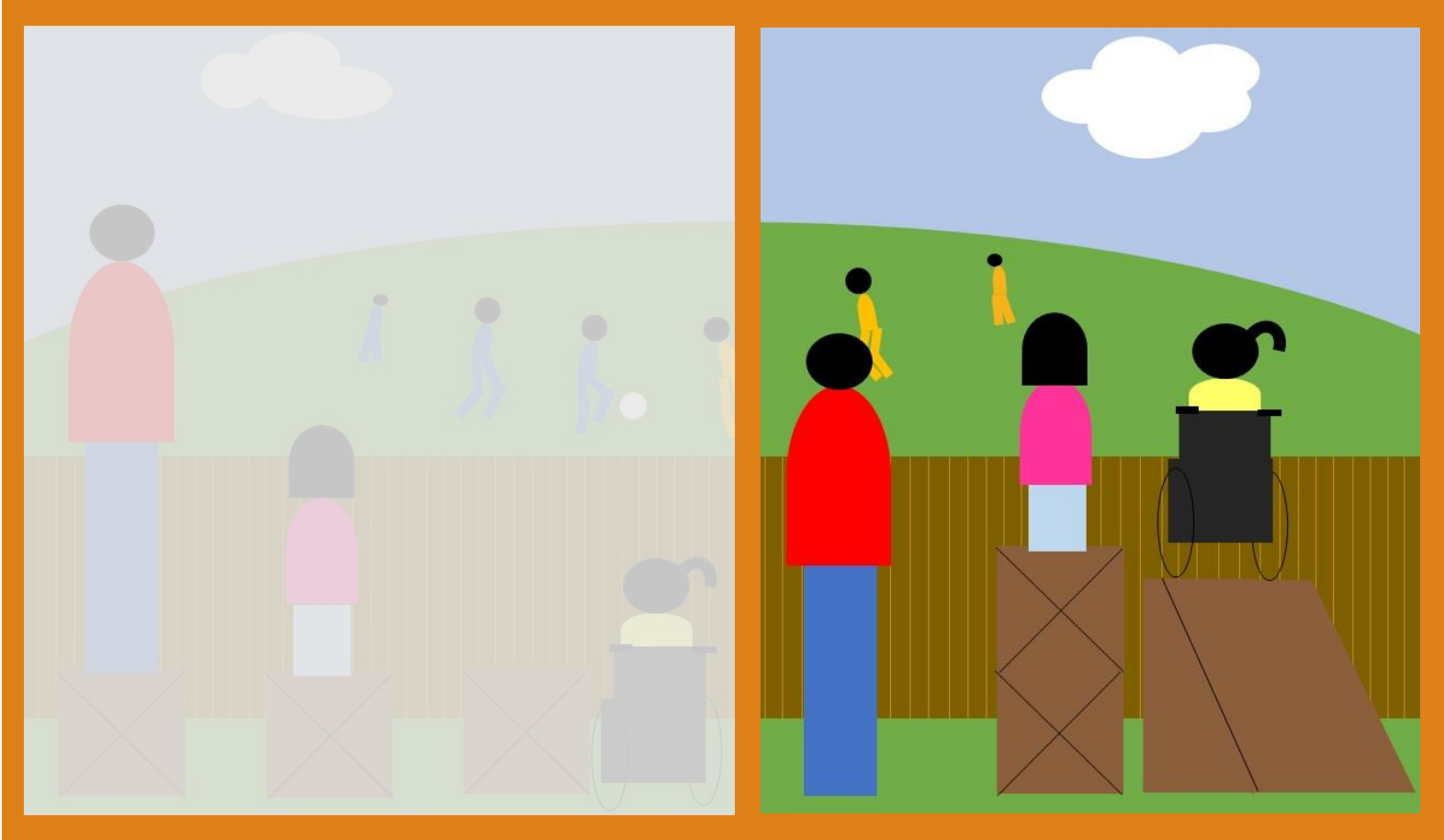


Image adapted from original image by Craig Froehle and the Interaction Institute for Social Change Artist, Angus Maguire.



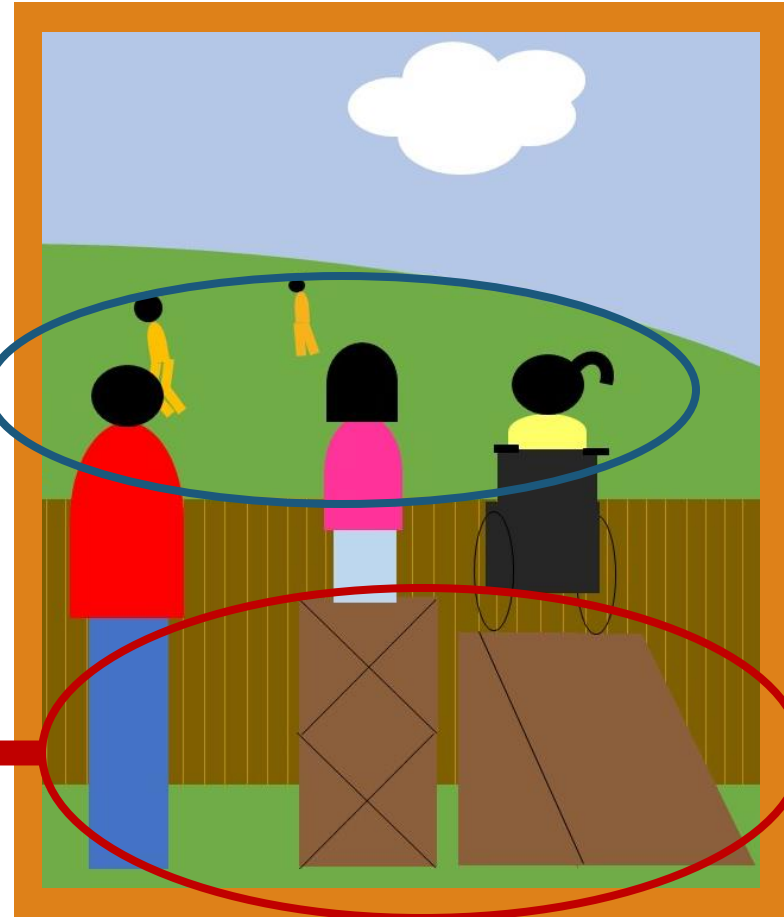


Programs
Interventions
Processes/protocols
Data collection

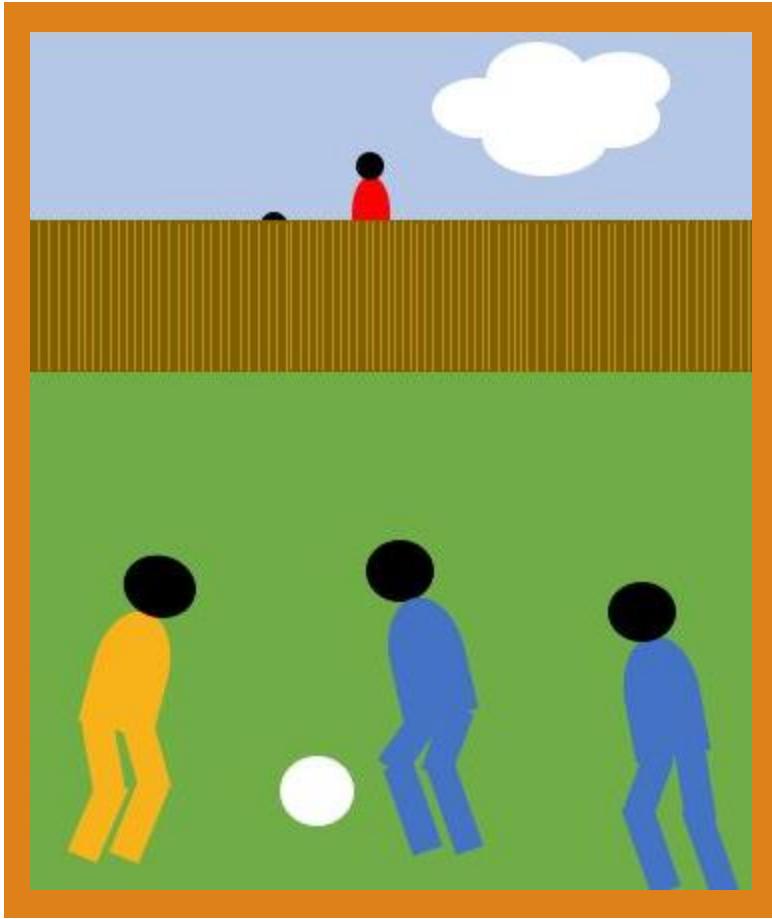


Programs, interventions,
processes/protocols, and
data collection designed to
reduce negative
health outcomes and
tailored to community

Results

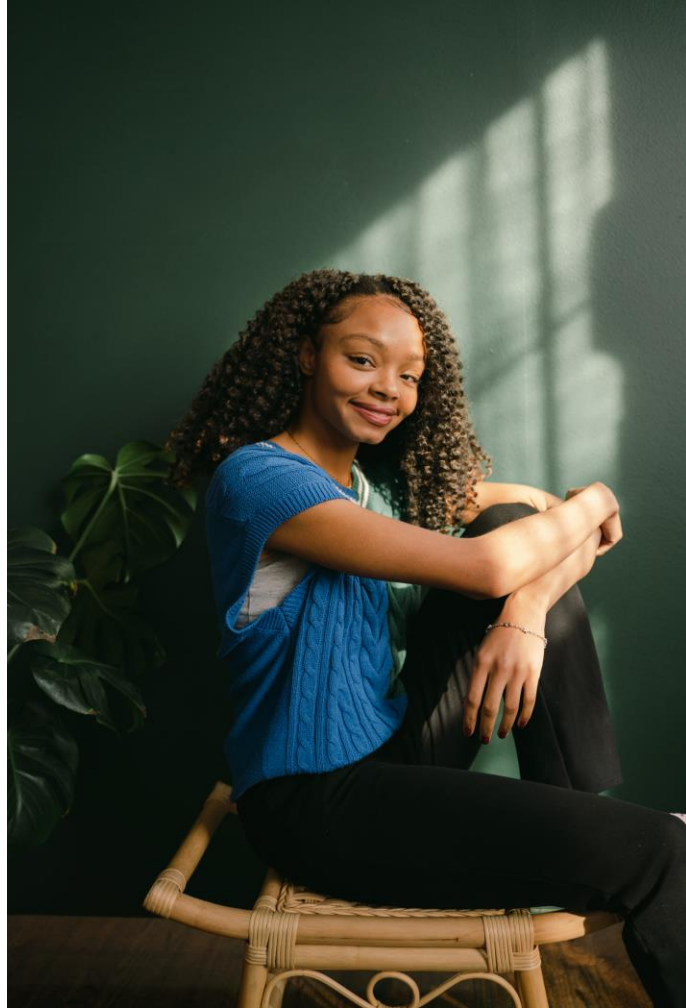








Health Outcomes



Tying it All Together: What Can We Do?

Developing a Practice Culture

- 1 Learn more about your patient's community
- 2 Involve the whole health care team
- 3 Educate yourself and team further about the social factors that influence child and adolescent health in your area

Review and Develop Policies & Processes

What are the opportunities for internal policy changes?

Engagement Level

- Patient panel
- Clinic
- Health System

What are the opportunities for cross-sector collaboration?

Agencies

- Youth Development
- Social Services
- Behavioral Health

What are our mutually beneficial goals?

Short and Long Term

- Close gaps
- Care

How do we meaningfully engage stakeholders?

Partners

- Youth & families
- Schools
- Businesses
- Government
- Faith-based



Group Poll

Have you conducted or participated in a Community Health Assessment (CHA) or Community Health Improvement Plan (CHIP)?

Community Health Assessment (CHA)

- A state, tribal, local, or territorial health assessment that identifies key health needs and issues through systematic, comprehensive data collection and analysis
- Also known as community health needs assessment (CHNA)
- Variety of data collection methods (e.g., Census, ACS, public forums, listening sessions, national surveillance surveys, community surveys, health department data)
- Helpful for developing a community health improvement plan





- Free online repository of resources to help one assess community needs, address social influences of health, action planning etc.
- Service of the Center for Community Health and Development at the University of Kansas
- <https://ctb.ku.edu/en>
- [Assessing Community Needs and Resources](#)

Community Health Improvement Plan (CHIP)

- A *community health improvement plan* (CHIP) is a long-term, systematic effort to address public health problems based on the results of community health assessment activities
- Includes objectives and target measures to determine progress

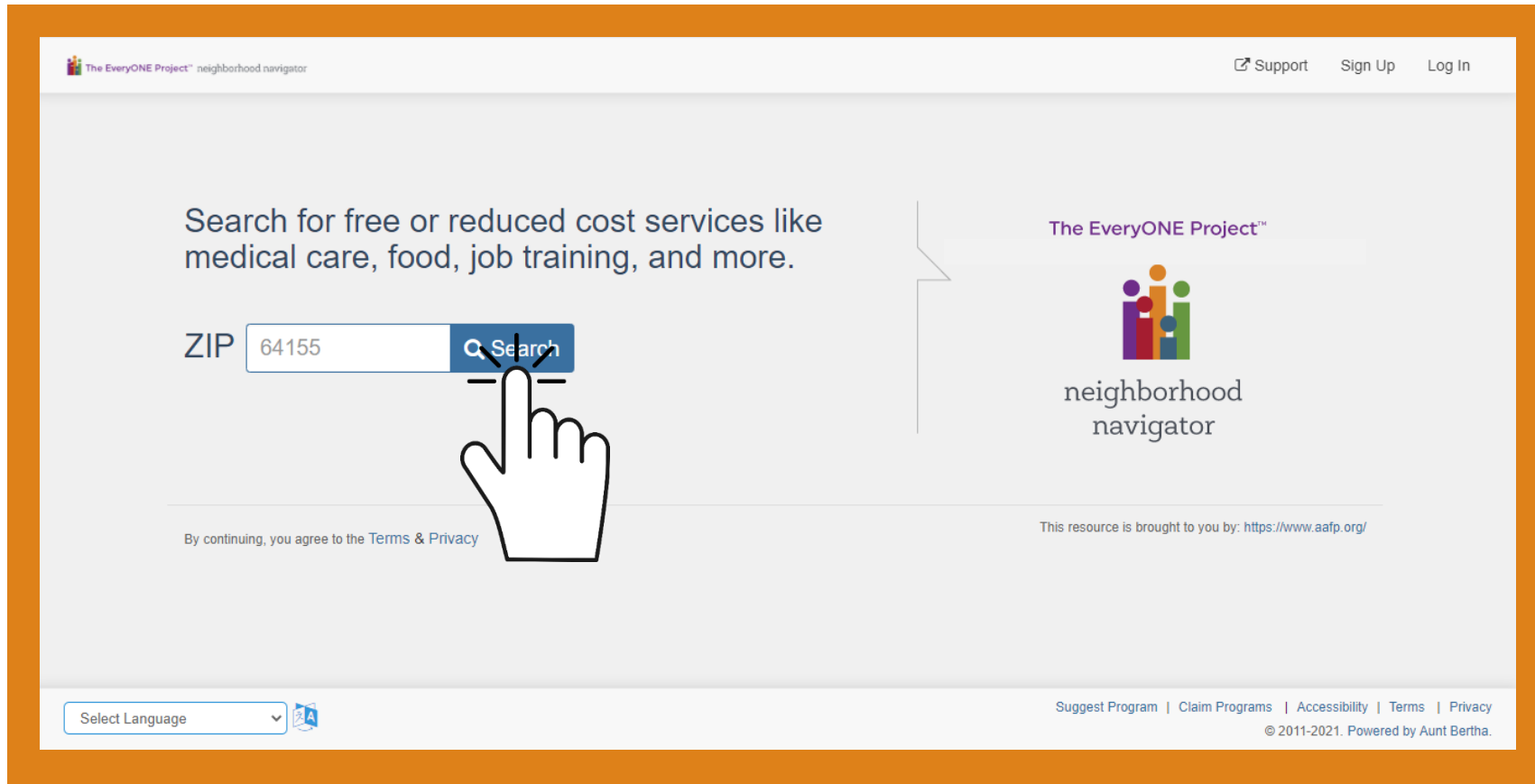
Benefit of CHAs, CHNAs, and CHIPs

- May already exist for your community!
- Improve organizational and community coordination and collaboration
- Increase knowledge about public health and the interconnectedness of activities
- Strengthen partnerships within state and local public health systems
- Provides baselines for performance measures to use in preparing for accreditation
- Benchmarks for public health practice improvements

Making Connections: Local Resources



Neighborhood Navigator (navigator.aafp.org)



The screenshot displays the Neighborhood Navigator website interface. At the top left, the logo for "The EveryONE Project™ neighborhood navigator" is visible. In the top right corner, there are links for "Support", "Sign Up", and "Log In". The main content area features a search prompt: "Search for free or reduced cost services like medical care, food, job training, and more." Below this, there is a search input field containing the ZIP code "64155" and a blue "Search" button. A hand icon is pointing at the "Search" button. To the right of the search field is the "The EveryONE Project™ neighborhood navigator" logo, which consists of a colorful graphic of stylized people and the text "neighborhood navigator". Below the search field, there is a link: "By continuing, you agree to the Terms & Privacy". To the right of this link, it says "This resource is brought to you by: <https://www.aafp.org/>". At the bottom left, there is a "Select Language" dropdown menu with a small icon. At the bottom right, there are links for "Suggest Program", "Claim Programs", "Accessibility", "Terms", and "Privacy", followed by the copyright notice "© 2011-2021. Powered by Aunt Bertha."

Continue the Conversation: Join Our Upcoming Learning Collaborative!

Building on the momentum from today's webinar, we're launching a Learning Collaborative to explore screening tools, school-community partnerships, clinic workflows, and sustainability strategies in greater depth.

Sessions kick off in March—stay tuned for details on how to join!

- **Save the Dates: March 18 – April 22, 2025**
- **Interactive discussions, expert-led sessions, and actionable insights**
- **Facilitated by SBHA & AAFP**



We look forward to your feedback.

Please complete our Zoom poll.



National Training & Technical Assistance Partner (NTTAP) Upcoming Webinar

Childhood Preventative Healthcare Services: Making Life Easier for Students and Families



SOCIAL INFLUENCES OF HEALTH BUILDING YOUR SCREENING ROADMAP

Date & Time
March 4, 3-4 p.m. ET



bit.ly/4hINP6q

CHILDHOOD PREVENTATIVE HEALTHCARE SERVICES MAKING LIFE EASIER FOR STUDENTS AND FAMILIES

Date & Time
March 13, 12-1 p.m. ET



bit.ly/30pUh0m



March 13, 2025

12:00 – 1:00 p.m. ET




Register Here:

[https://us06web.zoom.us/
webinar/register/WN_t4q
00FHZRaOWzyqtrhIkka](https://us06web.zoom.us/webinar/register/WN_t4q00FHZRaOWzyqtrhIkka)


Visit SBHA's Website For More Resources

*Bureau of Primary Health Care (BPHC) – National Training and Technical Assistance Partner (NTTAP)

Filter tags: All, Asthma, **BPHC-NTTAP***, COVID-19, Diabetes, Mental health, Oral health, Parent engagement, Policy, Primary care, Relationship abuse, SDOH, Sex education, Social Influencers, Substance Use, Suicide prevention, Telehealth, Tools, Vision, Wellness, Youth Development



Crisis-Ready: Using Telehealth to Support Health Centers and Schools During Climate Emergencies (10.24)



Creating and Sustaining Adolescent-Centered Health Programs (06.24)



Healthy Eyes, Healthy Lives: Community Approaches to Children's Vision and Eye Health (10.24)



School-Based Health Centers 101: Partnerships and Pathways to Expand Students' Access to Healthcare (09.24)

www.sbh4all.org





2025 National School-Based
Health Care Conference

June 29 -
July 1, 2025

Westin Washington, DC Downtown
Hotel (formerly the Renaissance
Downtown Hotel) in Washington, D.C



Stay Connected!



1. Subscribe to our bi-weekly e-newsletter (Digest)

Go to <https://bit.ly/SBHAdigest>

2. Follow us on social media



<https://www.facebook.com/SchoolBasedHealthAlliance>



<https://twitter.com/sbh4all>



<https://www.linkedin.com/company/school-based-health-alliance/>



<https://www.instagram.com/sbh4all/>



Scan this QR code to subscribe

Thank you!